

Apartments in a luxury residential complex in the picturesque resort village of Layan Bay on the coast of Phuket (008401)



1 117 000 € - 2 665 500 €

🏠 Floor area **251 m² - 829 m²**

🏠 Number of rooms


- 3 bedrooms**
- 4 bedrooms**
- 3+1 penthouse**
- 4+1 penthouse**

🪑 Furnitures **Partly**

🌊 To the beach: **m**

📍 Location: **Thailand, Phuket**

✈️ To the airport: **km**

 To the city
centre: km

Options

- ✓ Balcony/ Terrace
- ✓ Swimming pool
- ✓ Private territory
- ✓ Security
- ✓ Playground

Description

Luxury residential complex located in the picturesque resort village **of Lyan Bay** on the northwestern coast of Phuket.

This luxury development offers the perfect combination of comfort, privacy and luxury in an idyllic setting overlooking the ocean.

Spread over 40 acres, the property features 42 private villas and condominiums with private pools.

The villas are available in **17 three- and four-bedroom options, with single-storey, duplex and penthouse villas also available** with a similar number of bedrooms.

The area of the villas varies from 501 to 655 sq.m., and the condominiums - from 251 to 829 sq.m.

Residents can enjoy luxury amenities such as private pools, a residents-only swimming pool, fitness center, clubhouse and parking.

In addition, the complex offers access to Lian Bay's full range of entertainment and amenities, including restaurants, a spa, a beach restaurant and bar, sports facilities, a helipad and a yacht club.

INVESTMENT HIGHLIGHTS

- Luxury development in a world-class resort with access to hotel amenities and services
- Freehold residences in a hotel complex
- Great location in Layan area
- Highly competent and reputable developer and operator
- **Attractive payment terms:** down payment only 10% and payment upon delivery of 70% of the price

Owners will have access to a rental service managed by the property team. The premises will be leased for long-term.

The project is **located** just a couple of kilometers from Phuket Lagoon with its hotels, restaurants, spa and 18-hole golf course. Boat Avenue shopping and dining area and Porto de Phuket Shopping Center are a 15-minute drive away. The 2 best international schools in Phuket - UWC and British International School - are located within a 30-minute drive; Phuket Airport is just 25 minutes away.

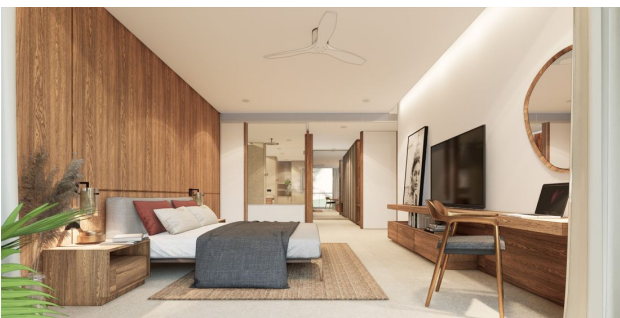
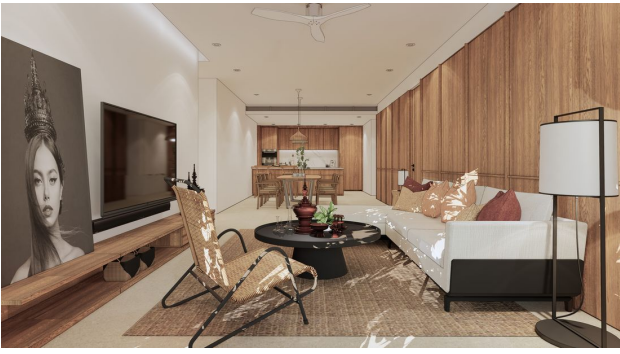
The stay promises a luxurious holiday and an unforgettable lifestyle in one of the most attractive parts of Phuket, where the proximity to luxury resorts creates an ideal atmosphere for living and relaxing.

Information updated: 26.03.2024

Photo gallery









Scan the QR code to open the original page