



Large apartment near the center of St. Vlas and only 250 meters from the seashore (269353)



235 000 €

🏠 Floor area **200 m²**

🏠 Number of rooms **3 bedrooms**

 Furnitures	Full
 To the beach:	250 m
 Location:	Bulgaria, Sveti Vlas
 To the airport:	km
 To the city centre:	km

Options

- ✓ Sea view
- ✓ White goods
- ✓ Furniture
- ✓ Balcony/ Terrace
- ✓ Swimming pool
- ✓ Private territory
- ✓ Elevator
- ✓ Playground

Description

We present to your attention a unique residential apartment in a luxury residential holiday complex, located in an attractive area, near the center of St. Vlas and just **250 meters from the seashore.**

Description of the apartment:

- **3 bedrooms**
- **area 200 m2**
- **5-6 floors**
- **sea view**

This complex combines modern architectural design with unique elements represented by a replica of the Eiffel Tower.

The residential complex offers a wide range of amenities and entertainment for its residents.

It features a heated indoor pool and a large outdoor pool, surrounded by comfortable sun loungers and parasols for a relaxing soak in the sun.

For those who monitor their health and physical fitness, the complex provides a gym, as well as a wellness center with a spa, massage treatments and a sauna.

These amenities will help you relax and recover after a busy day or spend an active vacation.

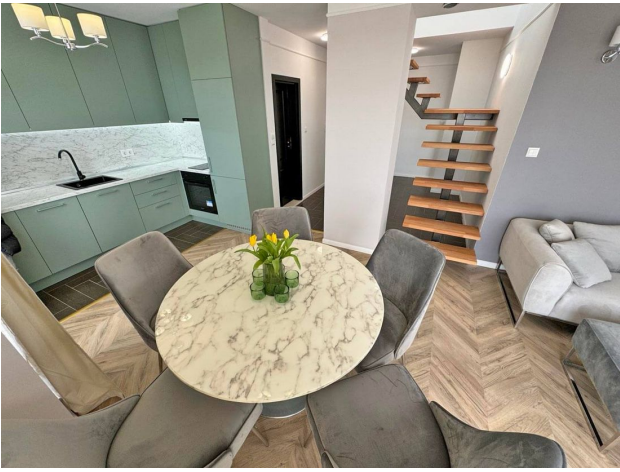
In addition, for connoisseurs of fine cuisine, the complex has a restaurant with Parisian cuisine, where you can enjoy delicious dishes and a cozy atmosphere.

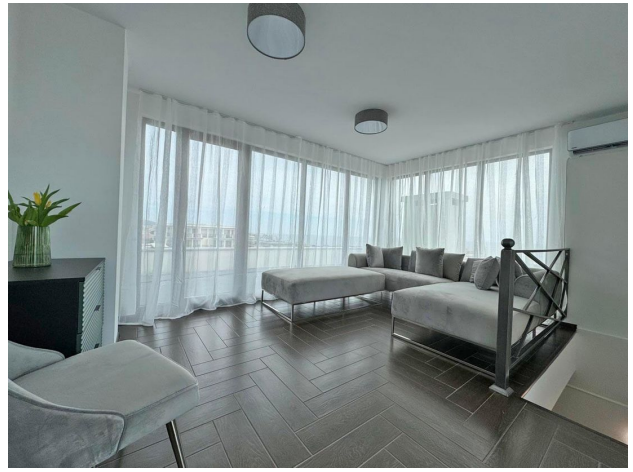
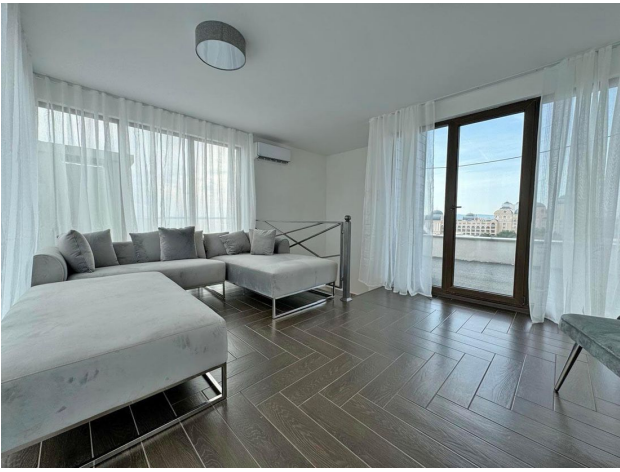
This apartment is the perfect combination of comfort, luxury and entertainment, the ideal place to relax and enjoy life by the sea.

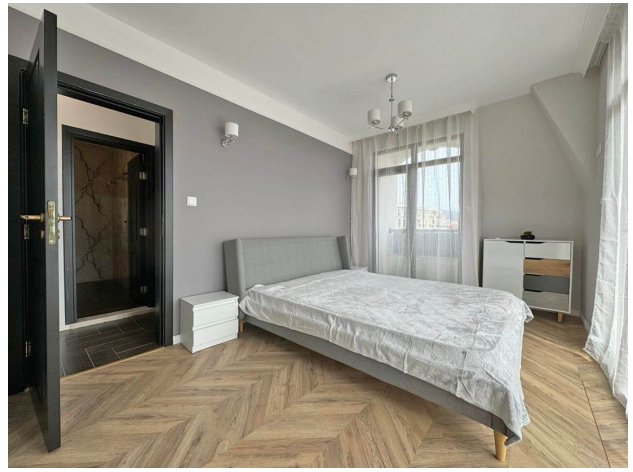
Do not miss the opportunity to purchase housing in this prestigious complex and enjoy all its advantages.

Information updated: 01.04.2024

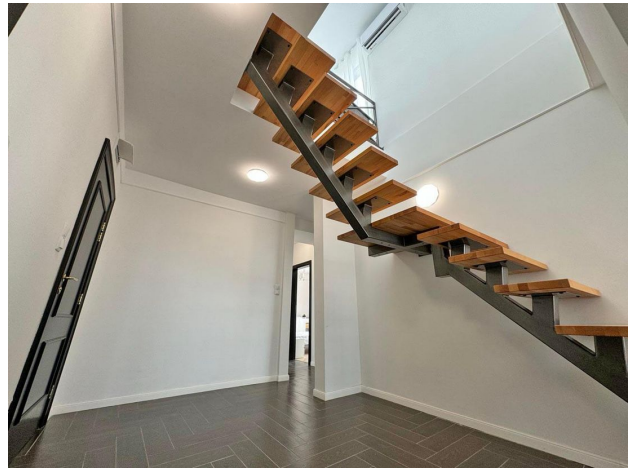
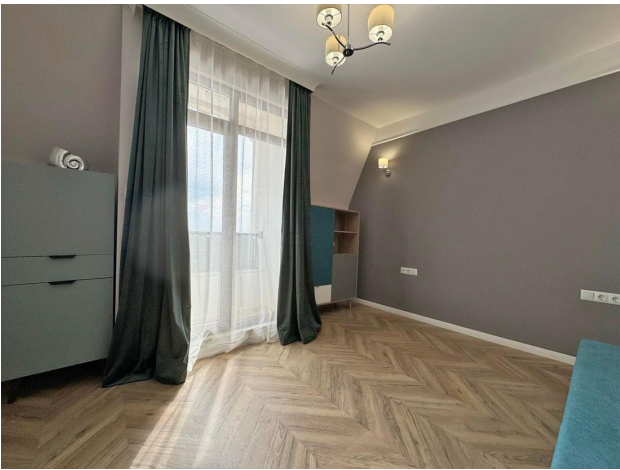
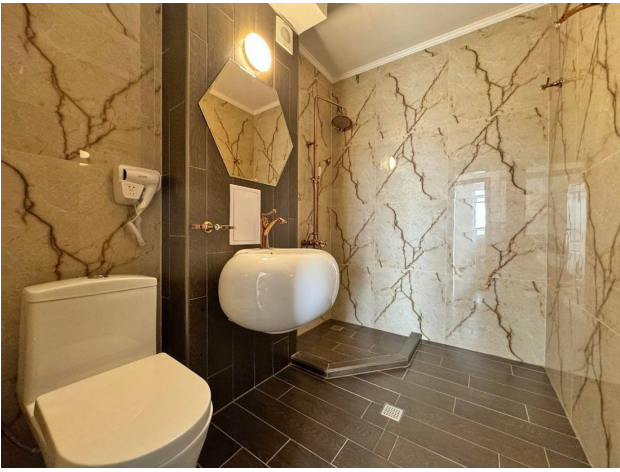
Photo gallery

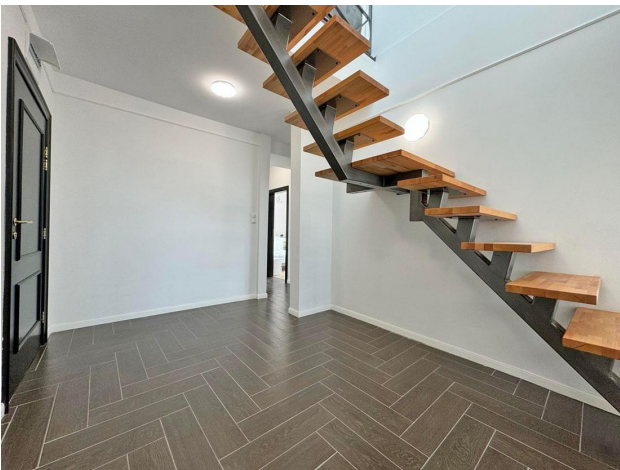


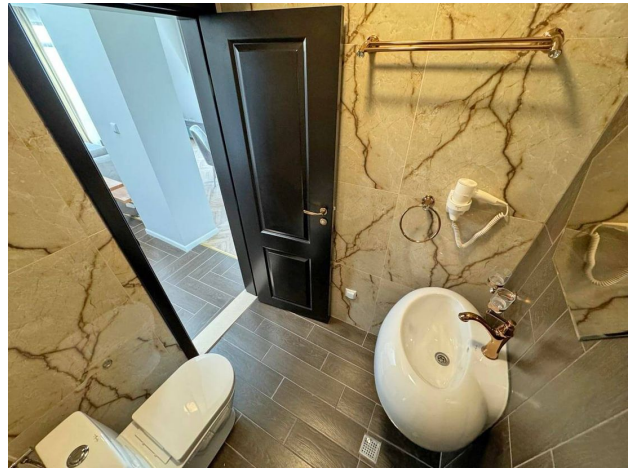












Scan the QR code to open the original page