

Apartment with a balcony in the Prondnik area of Bialy (007231)



198 500 €

-  Floor area **58 m²**
-  Number of rooms **2 bedrooms**
-  Furnitures **Full**
-  To the beach: **m**
-  Location: **Poland, Кракoв**
-  To the airport: **km**

 To the city
centre:

km

Options

- ✓ Furniture
- ✓ Balcony/ Terrace

Description

Apartment with a balcony located **in the Prondnik area of Bialy.**

The apartment is located in a residential complex between Sevna and Botsian streets.

The location provides quick access to the most attractive parts of the city (Main Square, universities, cultural institutions, shopping centers, etc.) and efficient movement outside the city.

In the immediate vicinity there are shops, banks, schools and kindergartens, healthcare facilities and a sports ground.

The estate includes, among others: Zhabka, Pharmacy, Hairdresser, Dentist, children's playground.

Nearby there are nurseries, kindergartens (including 2 municipalities), a primary school, playgrounds, Beloprondnice Park and Vitkovice Forest.

An apartment with an area of 57.73 m² with a balcony is located on the 5th floor of a 6-story building built in 2010.

The apartment consists of:

- living room with kitchenette (26.74 m²)
- bedrooms 1 (8.2 m²)
- bedrooms 2 (10.2 m²)
- bathroom (3.7 m²)
- hallway (6.66 m²)
- utility room. with washing machine (2.12 m²)

The apartment has briefcases, so-called "French balconies". This solution makes the rooms better lit and, as a result, becomes visually more attractive. Through the briefcases, the light in the room is distributed evenly, illuminating every part of the interior.

The apartment is equipped and furnished, ready to move in.

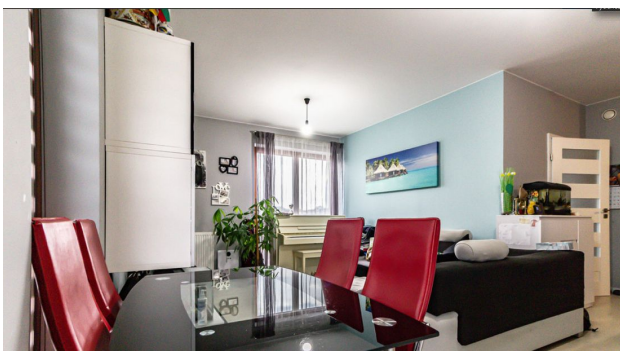
The building is adapted for people with disabilities - no thresholds, with a large elevator from the ground level.

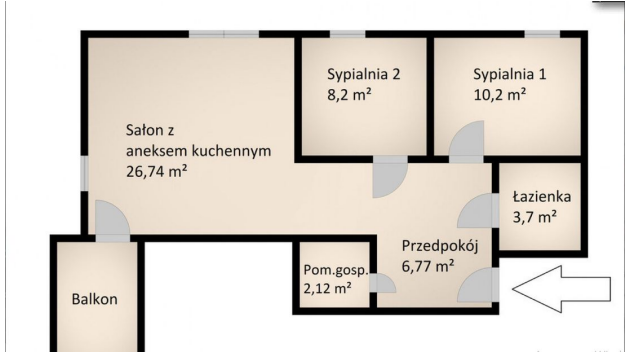
The building contains a so-called wheelchair room.

There are free parking spaces on the estate.

Information updated: 08.04.2024

Photo gallery





Scan the QR code to open the original page