





# Luxury villa with sea views in a quiet corner of Calpe (004237)



**1 825 000 €**

-  Floor area **292 m<sup>2</sup>**
-  Number of rooms **4 bedrooms**
-  Furnitures **Partly**
-  To the beach: **m**

 Location: **Spain, Аликанте**

 To the airport: **km**

 To the city  
centre: **km**

## Options

- ✓ Sea view
- ✓ Balcony/ Terrace
- ✓ Swimming pool
- ✓ Private territory

## Description

This superb house is located in a picturesque and secluded area **of Calpe**, offering spectacular views of the sea and Peñon d'Ifach.

With an ideal location just 5 minutes from the AP-7 motorway and the city of Calpe, and very close to golf courses, the marina and beaches, this villa is the ideal place for your secluded holiday.

**4 bedroom villa.** With an area of **292m<sup>2</sup>** divided into 3 floors, this house offers spacious and comfortable accommodation for your whole family.

On the top floor you will find a double bedroom with an en suite bathroom.

From the entrance through automatic doors we go straight to the entrance to the garage on the top floor, where we also find an off-site parking area with capacity for another car.

The main floor impresses with an open plan living/dining area, fitted kitchen, laundry room, guest toilet and two en-suite bedrooms.

On the semi-basement floor you will find a cinema room, a wine cellar, another bedroom with a bathroom and access to a terrace with a swimming pool and barbecue area.

This home is also equipped with solar panel, heated floors, elevator, Bosch/Siemens appliances and other modern amenities.

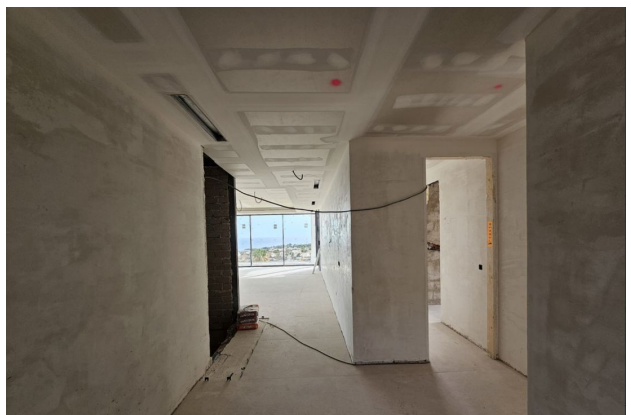
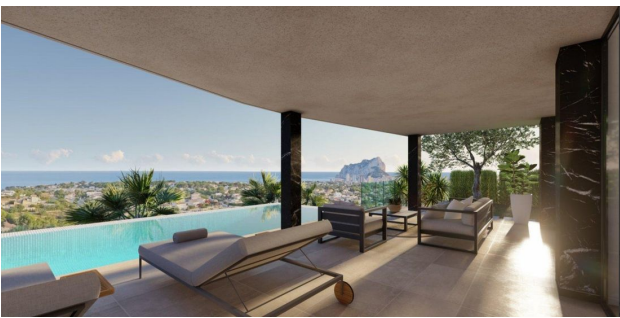
With energy classification A, this villa offers the perfect combination of comfort, luxury and modern technology for your enjoyment.

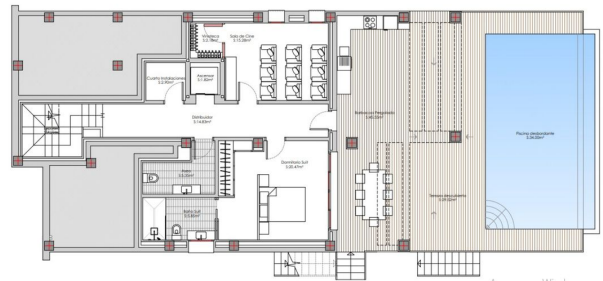
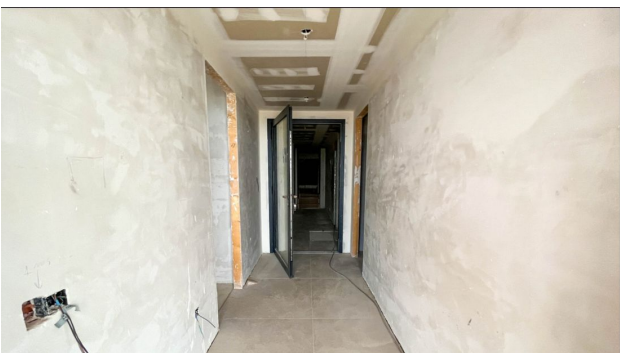
Contact us today to find out more about the opportunity to own this unique home in Calpe!

**Information updated: 16.04.2024**

## Photo gallery









Scan the QR code to open the original page