

Cozy apartment in the heart of Alanya: the perfect combination of comfort and location (32700)



203 000 €

 Floor area	65 m²
 Number of rooms	1 bedroom
 Furnitures	Partly
 To the beach:	300 m
 Location:	Turkey, Alanya, Alanya centre
 To the airport:	40 km
 To the city centre:	km

Options

- ✓ Balcony/ Terrace
- ✓ Swimming pool
- ✓ Private territory
- ✓ Outdoor parking
- ✓ Security
- ✓ Elevator
- ✓ Playground
- ✓ Generator

Description

Premium boutique complex ideally located in the heart of Alanya, near Cleopatra Beach.

This modern complex offers complete infrastructure for comfortable living and recreation, all in a closed area where your privacy and safety are ensured.

Description of the apartment:

- 1+1
- area 65 m2
- 1st floor
- apartment 5

The apartment consists of a spacious bedroom, a cozy living room combined with a kitchen, a bathroom and a cozy balcony where you can enjoy fresh air and views of the surrounding area.

Situated in a favorable area, right in the city center and only 300 meters from one of the most famous beaches of southern Turkey – Cleopatra Beach, this complex represents not only a comfortable living opportunity, but also a unique investment opportunity.

This unique development offers a tranquil living environment in the city center, where everything Alanya has to offer - a variety of restaurants, bars, nightclubs and boutiques - is just around the corner.

It is represented by one five-story building in a closed area with its own excellent infrastructure, where you can enjoy comfort and coziness in the heart of this exciting city.

Distances:

- Sea 300 m
- Antalya Airport: 130 km
- Alanya Airport: 40 km
- Cleopatra Beach: 250 m
- Alanya Center
- Alanya Waterpark: 400 m

Complex infrastructure:

- Generator
- Gym
- Sauna/hamam/jacuzzi

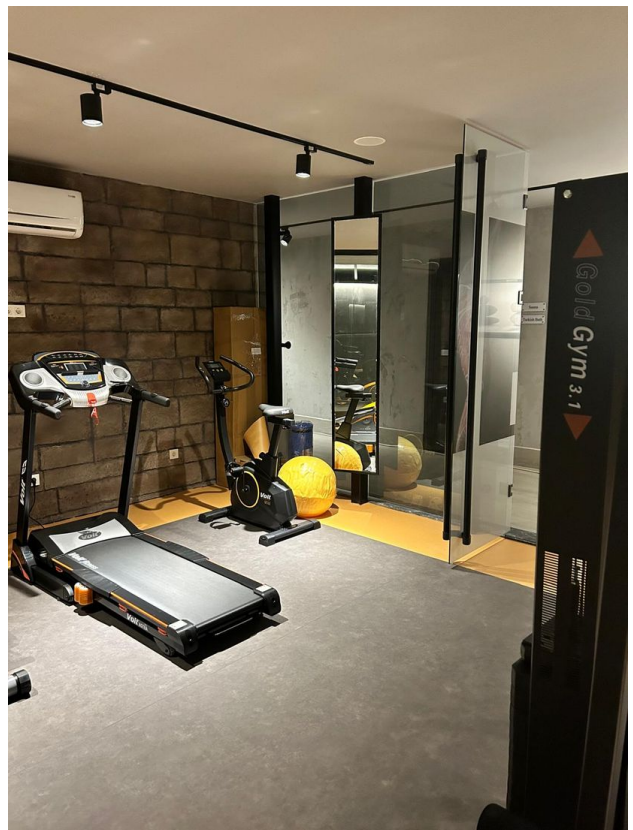
- Open pool
- Winter pool
- Pool bar
- Rest zone
- 24/7 security and video surveillance

Information updated: 09.12.2024

Photo gallery

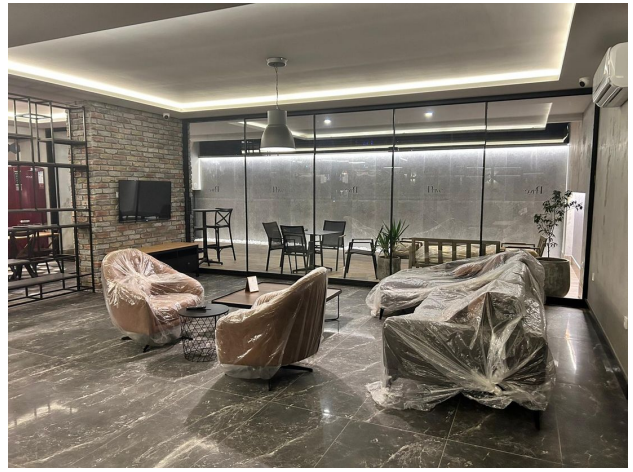


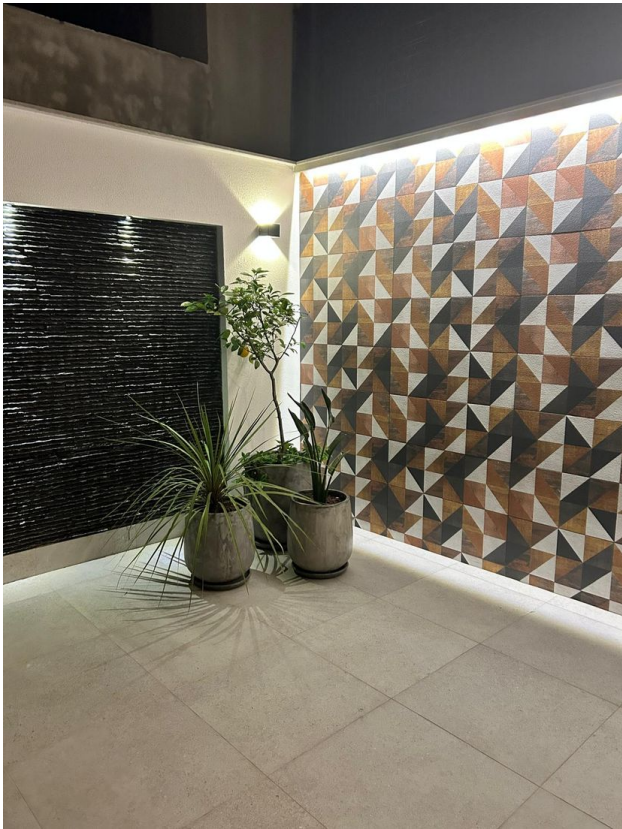














Scan the QR code to open the original page