





Start of sales! Apartments in the picturesque area of Iskele (011105)



103 730 € - 212 121 €

 Floor area	50 m² - 91 m²
 Number of rooms	Studio 1 bedroom 2 bedrooms 1+1 penthouse 2+1 penthouse
 Furnitures	Partly
 To the beach:	800 m

 Location: **North Cyprus, Iskele**

 To the airport: **km**

 To the city
centre: **km**

Options

- ✓ Sea view
- ✓ Mountain view
- ✓ Balcony/ Terrace
- ✓ Swimming pool
- ✓ Private territory
- ✓ Outdoor parking
- ✓ 0% installment
- ✓ Security
- ✓ Playground

Description

We are pleased to announce that the **start of sales of a unique residential complex in the picturesque area of Iskele, Boaz**, Northern Cyprus, has already begun!

This is an excellent opportunity for investors and future residents to purchase modern housing in a promising area.

Main advantages of the complex:

Variety of layouts:

- Studios area 50 m²
- One bedroom apartment area 65 m²
- Two bedroom apartment area 91 m²

- Duplexes and penthouses

Developed infrastructure:

- Swimming pools
- A fitness center
- Spa area
- Restaurants and cafes
- Supermarket
- Playgrounds
- Park areas
- Sports grounds
- Parking

Purchase terms:

- **Down payment:** 35% of the cost of the apartment
- **Remaining amount:** 65% can be paid in installments over 48 months without interest

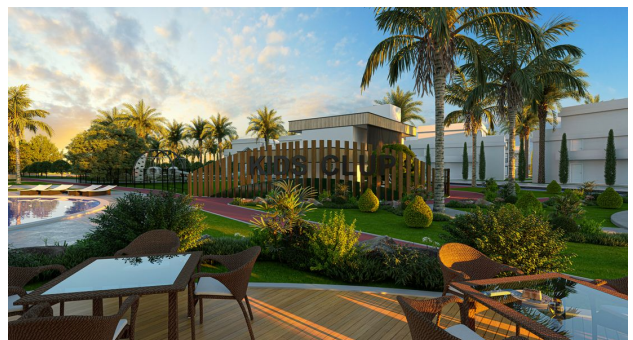
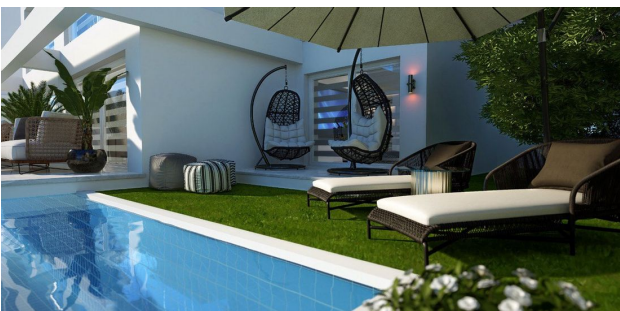
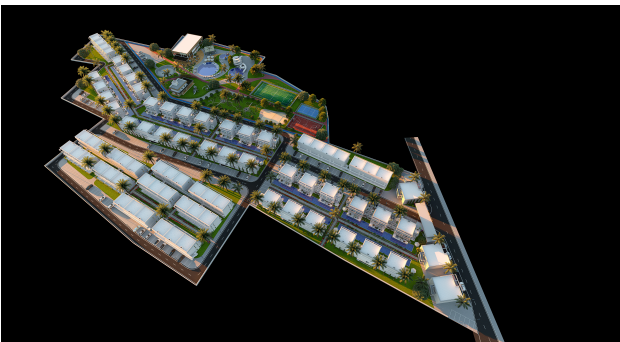
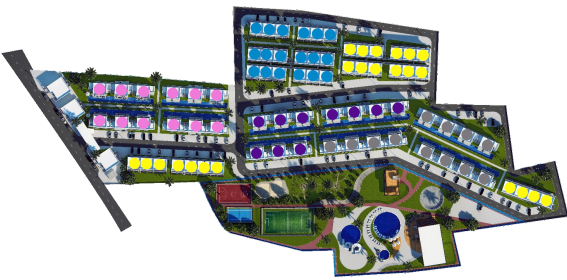
Full readiness of the complex: July 2027

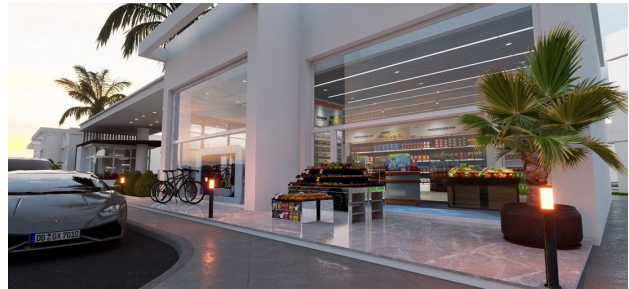
Don't miss the chance to become the owner of real estate in one of the most attractive regions of Northern Cyprus.

Hurry to take advantage of favorable purchasing conditions and provide yourself and your family with comfortable and modern housing!

Information updated: 21.11.2024

Photo gallery





1+2 (ALTERNATIVE TWO BEDROOM)

FIRST FLOOR



Gross size	78.7 m ²
Internal size	61.7 m ²
1. Kitchen & Living room	25 m ²
2. Bedroom	12.5 m ²
3. Bathroom	3.5 m ²
4. Corridor	4.7 m ²

LOFT FLOOR



5. Loft bedroom	12.5 m ²
6. Bathroom	3.5 m ²
7. Terrace	3.8 m ²

ONE BEDROOM

GROUND FLOOR

Gross size	62 m ²
Internal size	45.7 m ²
1. Terrace	11 m ²
2. Kitchen & Living room	25 m ²
3. Bedroom	12.5 m ²
4. Bathroom	3.5 m ²
5. Corridor	4.7 m ²



STUDIO

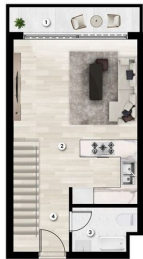
GROUND FLOOR

Gross size	50 m ²
Internal size	32 m ²
1. Terrace	10 m ²
2. Kitchen & Living room	25.1 m ²
3. Bathroom	3.2 m ²



STUDIO LOFT

FIRST FLOOR



Gross size	65 m ²
Internal size	46.6 m ²
1. Terrace	10.2 m ²
2. Kitchen & Living room	25.1 m ²
3. Bathroom	3.5 m ²
4. Corridor	4 m ²

LOFT FLOOR



5. Loft bedroom	11.6 m ²
6. Bathroom	3.5 m ²