








Modern 4 bedroom apartment in one of the best areas of Alicante (046237)



397 000 €

-  Floor area **112 m²**
-  Number of rooms **4 bedrooms**
-  Furnitures **Partly**
-  To the beach: **m**
-  Location: **Spain, Аликанте**
-  To the airport: **km**
-  To the city centre: **km**

Options

- ✓ Sea view
- ✓ Balcony/ Terrace
- ✓ Swimming pool
- ✓ Private territory
- ✓ Elevator
- ✓ Playground

Description

This spacious and modern **4 bedroom apartment** is located in one of the best areas of Alicante.

The residential complex offers high-class amenities and unique public areas that will provide you with comfort and quality of life.

Description of the apartment:

- Bedrooms: 4
- Bathrooms: 2
- Dining rooms: 1
- Cuisine: American
- Usable area: 97 m²
- Built-up area: 112 m²
- Terrace: 8 m²
- Floor number: 2

The residential complex offers a variety of amenities for all residents:

- Public parking and storage
- Social club
- Gymnasium

- Indoor pool with rooftop solarium
- Bicycle parking

On the roof of the building there are impressive public areas unique to the city:

- Swimming pool with magnificent sea views
- Green areas
- Social space
- Solarium

Location advantages:

- 10 minutes walk to city center
- Proximity to the sea
- Convenient access to transport infrastructure

Year of construction: 2025

Green areas, recreation areas, schools, medical centers, supermarkets, shops and large shopping centers are all nearby.

This apartment offers the opportunity to enjoy unique moments in one of the best areas of Alicante, combining the amenities of the city and proximity to the sea.

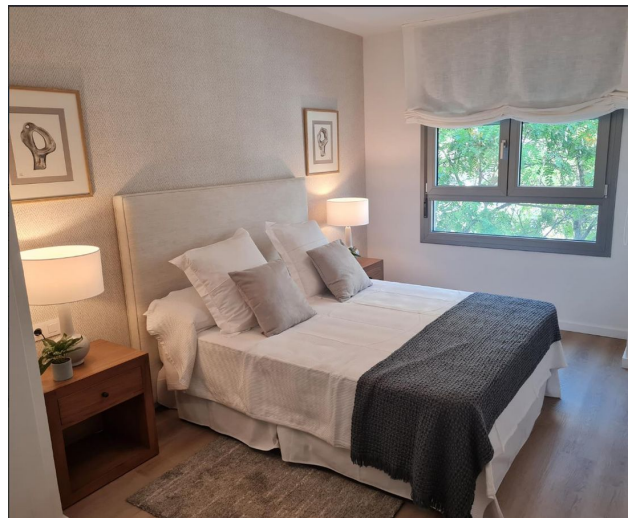
Living here will provide you with a high level of comfort and quality of life.

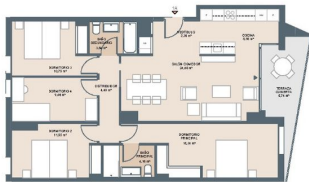
Information updated: 12.06.2024

Photo gallery









Esc. 2 P01-A



Superficies: Vivienda **4d**
Superficie útil interior 87,50 m²
Superficie útil exterior 11,25 m²
Superficie construida cerrada 138,25 m²
Superficie construida exterior ZCC 138,25 m²

Localización:



A continuación se muestra



El presente plano arquitectónico, que incluye una copia de los planos de obra, puede ser objeto de modificaciones o alteraciones por los propietarios o por terceros, en cualquier momento, sin que ello afecte a la validez de este documento.



Scan the QR code to open the original page