







Apartment in a modern complex in Benidorm (065237)



570 000 €

🏠 Floor area 51 m²

 Number of rooms	1 bedroom
 Furnitures	Partly
 To the beach:	100 m
 Location:	Spain, Benidorm
 To the airport:	km
 To the city centre:	km

Options

- ✓ Sea view
- ✓ Balcony/ Terrace
- ✓ Swimming pool
- ✓ Private territory
- ✓ Security
- ✓ Beachfront
- ✓ Elevator
- ✓ Playground

Description

The complex will consist of a skyscraper in the shape of two sails connected by a mast, more than 44 floors (158 meters) high. The building will include more than 200 apartments and an exclusive hotel. The design focuses on energy efficiency and environmental friendliness, with the project's core based on sustainability principles.

The complex is located on the first line of Poniente beach, which provides residents and guests with magnificent views of the sea and convenient access to the beach area. The

landscape around the building will be complemented by Mediterranean dunes, in harmony with the nature of Poniente Beach, creating a unique and cozy atmosphere.

The complex will provide a wide range of amenities and services for a comfortable and modern life:

- Location: Benidorm
- Floor: 13
- Usable area: 41 m²
- Built-up area: 51 m²
- Terrace: 11 m²
- Bedrooms: 1
- Bathrooms: 1
- Furnished kitchen
- Kinds:
- View: sea
- Distance to sea: 100 m

Recreation and entertainment area:

- Sauna and spa
- Lobby
- Social club and restaurant
- Auditorium
- Beach club with three different areas (grass, sand and wood) and direct access to the beach
- Gym
- Yoga and Pilates area
- Two swimming pools: one 1000 m² exclusively for owners and a 1500 m² outdoor pool in the beach club
- Coworking
- Tennis and padel court
- Gardens
- New landscape with dunes in Mediterranean style
- Natural ecosystem provided by gardens and energy efficiency

Car amenities:

- Parking spaces with electric charging (for approximately 180 cars)
- Large warehouses

Year of construction: 2025

Information updated: 04.07.2024

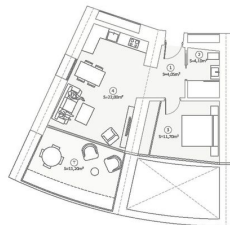
Photo gallery





Tipología: 1 Dormitorio

SUPERFICIE (M ²)	ÁREAS (M ²)	USOS (M ²)
INTERIOR BRIGADA	4	43
BALCÓN	43	3
DEPORTE	10,7	14,2
SALVAMENTO/COCHA	22	26,2
TOTAL ÚTIL	418	51
TERRAZA	15,2	14,8
RESERVA/CORRAL Y COMUNES	38,8	38,8
TOTAL	50	94,7



Modelo de planta de un dormitorio con baño y vestíbulo. El modelo de planta de un dormitorio con baño y vestíbulo es un modelo de planta de un dormitorio con baño y vestíbulo. El modelo de planta de un dormitorio con baño y vestíbulo es un modelo de planta de un dormitorio con baño y vestíbulo.