







Apartment with sea views in Benidorm (066237)



980 000 €

🏠 Floor area 79 m²

 Number of rooms	2 bedrooms
 Furnitures	Partly
 To the beach:	100 m
 Location:	Spain, Benidorm
 To the airport:	km
 To the city centre:	km

Options

- ✓ Sea view
- ✓ Balcony/ Terrace
- ✓ Swimming pool
- ✓ Private territory
- ✓ Security
- ✓ Elevator
- ✓ Playground

Description

A skyscraper in the shape of two sails connected by a mast, which will rise **above the sea in Benidorm.**

The neighboring building has over 44 floors, 158 meters high, over 200 apartments and an exclusive hotel, located on the last plot of land with direct views of Poniente beach in Benidorm.

The complex is located on a plot on the first line of Poniente beach.

The design of the building will feature a new landscape: around it, Mediterranean-style dunes will be recreated, which will dialogue with the landscape of Poniente Beach.

Residents can enjoy fresh water **in 2 swimming pools** (one of 1000 m² exclusively for the owners, and the other outdoors, in the beach club, of approximately 1500 m²).

But not only that, residents will live in a natural ecosystem provided by their gardens and energy efficiency.

The building will have **a sauna, spa, lobby, gym, yoga and Pilates area, co-working space, gardens, sky gardens, tennis and padel court, social club, restaurant, large storage areas and parking spaces with approximately 180 electrical charging cars.**

The development will feature an auditorium and beach club with three different areas of grass, sand and wood and direct access to the beach, where you can enjoy sunset light and the Mediterranean lifestyle.

- **Type:** Apartment
- **Bedrooms:** 2
- **Bathrooms:** 2
- **View:** sea
- Furnished kitchen
- **Usable area:** 64 m²
- **Built-up area:** 79 m²
- **Terrace:** 22 m²
- **Floor number:** 20

100 m to the sea.

Year of construction: 2025

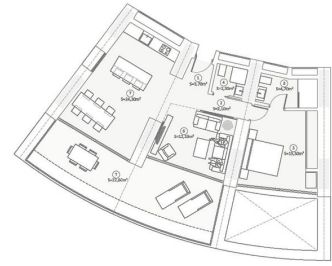
Information updated: 04.07.2024

Photo gallery



Tipología: 2 Dormitorios
TIPO SUITE SALÓN

SUPERFICIE (M ²)	DETAJADO (M ²)	ENCLOSURE (M ²)
ÁREA DE	17	15
ÁREA DE	17	15
ÁREA DE	47	17
ÁREA DE	13	13
ÁREA DE	160	160
SALA DE	151	165
COMUNICACION	261	261
TOTAL SUPERFICIE	348	360
TERMINAL	224	224
PROFESIONAL Y COMERCIAL	261	261
TOTAL CON TERMINAL	513	513



Scan the QR code to open the original page