

# Luxury villa in the urbanization of Sierra Cortina, in the Finestrat mountains (074237)



**540 000 €**

-  Floor area **122 m<sup>2</sup>**
-  Number of rooms **3 bedrooms**
-  Furnitures **Partly**

 To the beach: **m**

 Location: **Spain, Аликанте**

 To the airport: **km**

 To the city centre: **km**

## Options

- ✓ Balcony/ Terrace
- ✓ Swimming pool
- ✓ Private territory

## Description

Luxury villa in the urbanization of Sierra Cortina, located in the Finestrat mountains.

### Main characteristics:

- Property type: Chalet/Villa
- Bedrooms: 3 (with the option of adding an additional suite to create a 4th bedroom)
- Bathrooms: 3
- Plot size: 390 m<sup>2</sup>
- Built area: 122 m<sup>2</sup>
- Terrace: 191 m<sup>2</sup>
- Year of construction: 2025

### Description of the space:

- Living room and kitchen: Spacious living room combined with kitchen creates a functional space of approximately 40 m<sup>2</sup>
- Attic with solarium terrace: Large terrace with seating area and barbecue, as well as the possibility of creating an additional suite or studio
- Private Garden: Luxurious infinity pool surrounded by manicured gardens

- Private garage: Convenient and safe for parking

### **Additional amenities:**

- Artificial ventilation: Provides a comfortable atmosphere inside the house
- Open and equipped kitchen: Modern kitchen, ready to use
- Large terraces with solarium: Excellent views of the sea and the Benidorm skyline

The villa is located in Finestrat, close to two golf courses, theme parks, a large shopping center and just a few minutes from the beaches.

This is an ideal place for those who value privacy and comfort, while enjoying all the benefits of modern infrastructure.

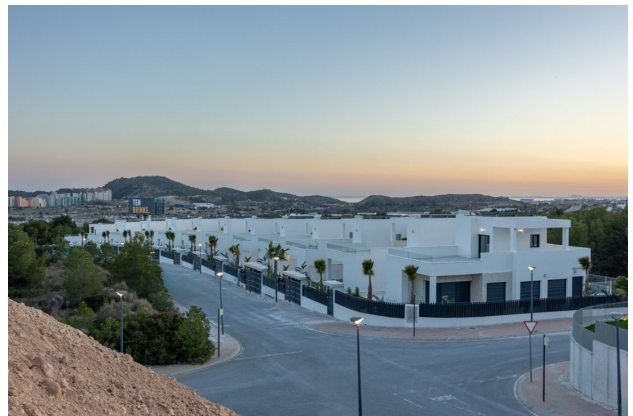
**Information updated: 09.07.2024**

## **Photo gallery**

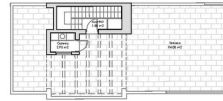




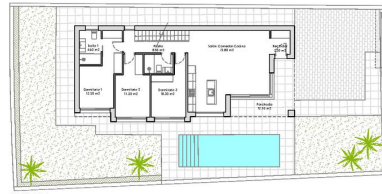








PLAZA PRIMERA



PLAZA SALA



### Vivienda 11

#### Resumen superficies

Superficie útil vivienda	86,40 m <sup>2</sup>
Puerta de acceso	16,80 m <sup>2</sup>
Puerta de salida	3,60 m <sup>2</sup>
Superficie útil terraza	107,40 m <sup>2</sup>
Puerta de acceso	13,40 m <sup>2</sup>
Puerta de salida	16,80 m <sup>2</sup>
Superficie parcela	438,00 m <sup>2</sup>







Scan the QR code to open the original page