

Luxury apartments in the premium area of ☒☒Bang Tao (019317)



442 900 € - 1 576 000 €

🏠 Floor area **108 m² - 303 m²**

🏠 Number of rooms **2 bedrooms**
3 bedrooms
4 bedrooms

🪑 Furnitures **Partly**

🌊 To the beach: **1000 m**

📍 Location: **Thailand, Phuket**

 To the airport: **km**

 To the city
centre: **km**

Options

- ✓ Balcony/ Terrace
- ✓ Swimming pool
- ✓ Private territory
- ✓ 0% installment
- ✓ Security
- ✓ Elevator
- ✓ Playground

Description

The new project, developed by a renowned developer, embodies elegance and style in every detail, emphasizing attention to quality and design.

It offers not only elegant apartments, but also special conditions for investors. This residence is your new home where luxury meets tradition in refined harmony.

Main characteristics:

- Delivery: 1st quarter 2026
- To the sea: 1 km
- Number of bedrooms: 2 - 3
- Number of bathrooms: 2 - 3
- Living area: 108-303 m²
- Pool area: 300 m²
- Income: Actual rental income
- Installment plan: Interest-free installment plan for the construction period

Description of the complex:

- Two buildings of seven floors each
- The total area of the apartments varies from 108 to 310 sq.m.
- 73 apartments with 2 and 3 bedrooms, as well as 2 penthouses
- 145 parking spaces for cars and motorcycles

Description of the apartments: Natural shades and textures create an atmosphere of warmth and comfort, while upholstered furniture and stylish accents add sophistication. Every detail, from fittings to lighting, emphasizes attention to quality and the desire to create not just housing, but a unique space.

Project Features: This luxury project is located next to the Laguna resort and offers a variety of infrastructure. It stands out for its privileged location on Bang Tao Beach, where there are restaurants, cafes, shops, SPA, golf and a clinic within walking distance.

Close to luxury residential developments and just 700 meters from the beach, this project is located minutes from the best golf course in Thailand according to the World Golf Awards. Developed by a renowned premium real estate developer in Bangkok and Pattaya, this boutique project with a limited number of apartments in two buildings offers spacious apartments in a variety of layouts, with ceiling heights of 3 meters.

Investors can take advantage of special conditions, including minimum prices before the official start of sales, interest-free installment payments until construction is completed, and full ownership.

Included in cost:

- Finishing
- Plumbing
- Built-in kitchen
- Built-in wardrobes
- Air conditioners

The price does not include:

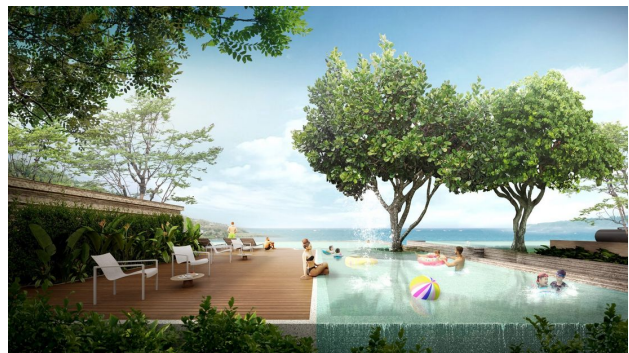
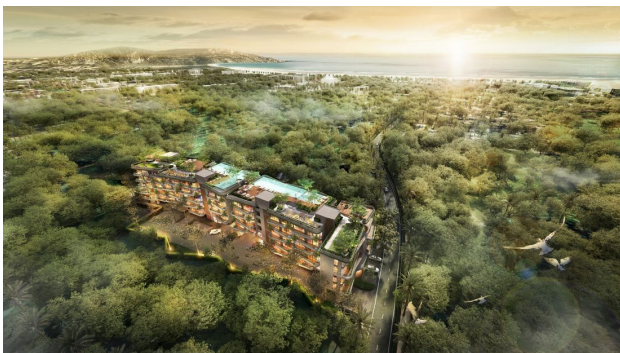
- Furniture package

Distance from objects:

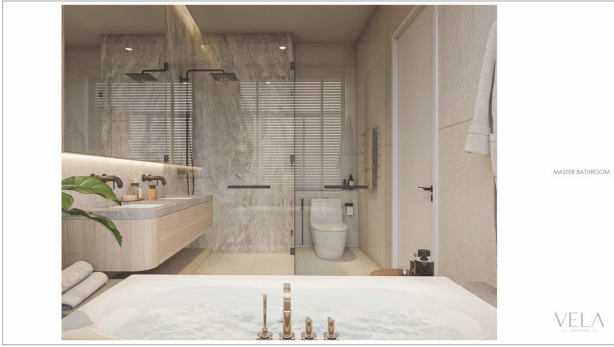
- Airport: 20 min
- Patong: 20 min
- Shopping center: 5 min
- Supermarket: 2 min
- Restaurants: 5 min
- Hospital: 15 min
- Golf club: 5 min
- Yacht club: 15 min

Information updated: 17.07.2024

Photo gallery







Scan the QR code to open the original page