

Apartments in a complex in the prestigious area of Bahçeler/Iskele (002514)



116 433 € - 185 315 €

🏠 Floor area **46 m² - 82 m²**

🏠 Number of rooms **Studio**
1 bedroom

🪑 Furnitures **Partly**

🌊 To the beach: **700 m**

📍 Location: **North Cyprus, Iskele**

✈️ To the airport: **km**

 To the city
centre: km

Options

- ✓ Smart house
- ✓ Balcony/ Terrace
- ✓ Swimming pool
- ✓ Private territory
- ✓ Outdoor parking
- ✓ 0% installment
- ✓ Security
- ✓ Playground

Description

Welcome to an exclusive project located in the prestigious Bahçeler/Iskele area.

Featuring 384 units of horizontal architecture, this elegant development invites you to enjoy luxurious living and comfort all year round with its exceptional design, modern amenities and superb location.

The complex, located **just 700 meters from the sea**, allows you to feel every day as a holiday.

Live in a unique location with an innovative concept of natural-looking sand pools, first implemented in Iskele. A complex with amenities equal to a five-star hotel.

Main characteristics:

- Land area: 25,053 m²
- Closed area: 24,300 m²
- Pool area: 3,000 m²
- Green area: 2,330 m²

Apartment types:

- **Studio area 45.6-50.9 m2**
- **Penthouse Loft 1+1 area 73.5-81.95 m2**

Location advantages:

- School: 1.5 km
- Ercan Airport: 49 km
- Beach club: 700 m
- Shopping center: 2.5 km
- Famagusta: 22 km
- Hospital: 3 km

Property Features:

- Glossy finish in 3 color options in the kitchen
- Aluminum double glazing
- Window sill made of natural marble or travertine
- Parquet or ceramic option with 3 color options
- American panel doors
- Steel staircase with wooden step
- Heated floor in bathroom(s)
- Central heating and cooling in the house
- **Smart home systems** (lighting and heating/cooling control)

On-site amenities:

- Open pool
- Aquapark
- Indoor swimming pool
- Playground
- Basketball court
- Shop
- Spa and gym
- Restaurant
- Pool bar

- Kids club
- Outdoor amphitheater/cinema
- Central generator
- Central Internet

Terms of purchase:

- Delivery: 11.2026
- Deposit: 5%
- **Down payment: 30-45%**
- Payments before receiving keys: 30-45%
- Remaining: 20% after receiving the keys (within 1 year)

Immerse yourself in an atmosphere of luxury and comfort while enjoying the unique location and first-class amenities of the complex.

We are waiting for you for an unforgettable life in Iskele!

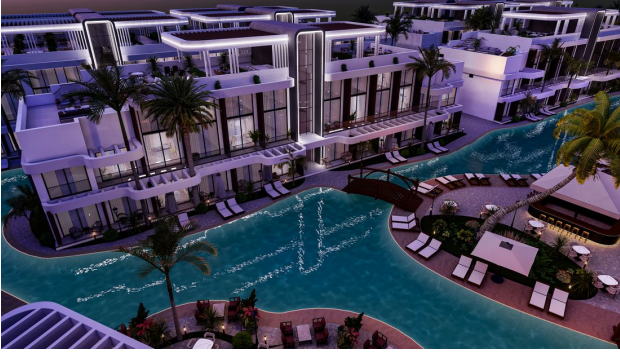
Information updated: 21.08.2024

Photo gallery



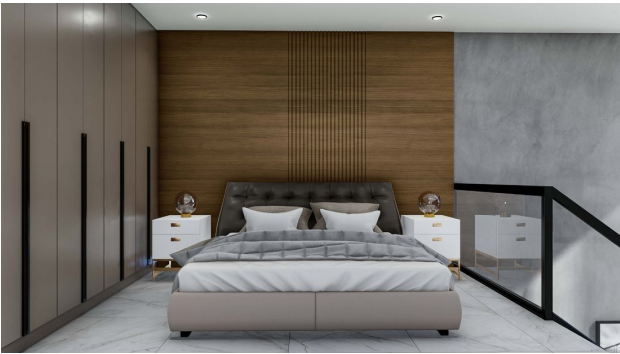














Scan the QR code to open the original page