

# Panoramic Sea View Villas in Nai Thon (024317)



**796 000 €**

**🏠 Floor area**      **330 m<sup>2</sup> - 700 m<sup>2</sup>**


**🏠 Number of rooms**  
**2 bedrooms**  
**3 bedrooms**  
**4 bedrooms**

**🪑 Furnitures**      **Partly**

**🌊 To the beach:**      **600 m**

**📍 Location:**      **Thailand, Phuket**

 To the airport: **10 km**

 To the city  
centre: **km**

## Options

- ✓ Balcony/ Terrace
- ✓ Swimming pool
- ✓ Private territory
- ✓ Garden

## Description

A luxury complex of 18 villas, located in terraces at different heights, offers an exceptional combination of luxury and natural beauty.

Each villa is designed to provide stunning panoramic sea views, creating ideal conditions for living and relaxing.

### Description of villas:

- **Bedrooms:** 2 - 4
- **Bathrooms:** 3 - 5
- **Living area:** 330 - 700 m<sup>2</sup>
- **Land area:** 400 - 720 m<sup>2</sup>
- **Pool area:** 35 - 48 m<sup>2</sup>
- **Income: actual rental income**
- Installment: for the period of construction

**Distance to the sea:** 600 m

**Villa features:** The entrance to the villa is decorated with a water composition with waterfalls, creating an atmosphere of comfort and relaxation.

The main floor of the villa is the top floor, where there is a covered parking for two cars, a private pool, a bedroom with a dressing room and a bathroom, as well as a kitchen with a bar counter, a dining room and a living room, combined into a single open space.

There is a barbecue area on the terrace. An internal marble staircase leads to the lower floor, where there are 2-3 guest bedrooms with their own bathrooms and spacious balconies, an office, a cinema room and utility rooms.

**Location advantages:** The villas offer stunning sea views and are located in close proximity to key infrastructure facilities. The airport is only 10 minutes away, which makes the complex convenient for both living and renting.

**The price includes:** Finishing, plumbing, built-in kitchen, built-in wardrobes, air conditioners, landscape design.

**Not included in the price:** Furniture package.

**Distances to key facilities:**

- Airport: 10 min
- Patong: 40 min
- Shopping mall: 20 min
- Supermarket: 15 min
- Restaurants: 5 min
- Hospital: 40 min
- Golf club: 40 min
- Yacht club: 35 min

**Completion: 2024**

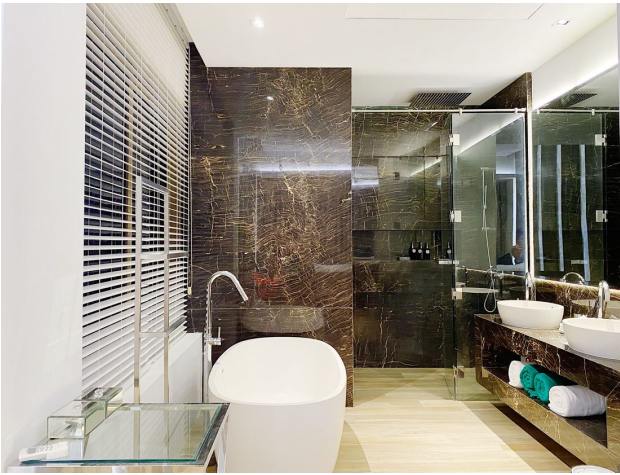
This villa complex is an ideal place for those who are looking for a combination of comfort, style and unique sea views, as well as the opportunity to earn income from renting out the property.

**Information updated: 21.08.2024**



# Photo gallery





Scan the QR code to open the original page