


# Affordable apartments 500 meters from Nai Yang Beach (025317)




**85 939 € - 376 722 €**

 Floor area **25 m<sup>2</sup> - 123 m<sup>2</sup>**

 Number of rooms **1 bedroom**  
**2 bedrooms**  
**3 bedrooms**

 Furnitures **Partly**

 To the beach: **500 m**

 Location: **Thailand, Phuket**

 To the airport: 5 km

 To the city  
centre: km

## Options

- ✓ Sea view
- ✓ Mountain view
- ✓ Balcony/ Terrace
- ✓ Swimming pool
- ✓ Private territory
- ✓ 0% installment
- ✓ Security
- ✓ Elevator
- ✓ Playground

## Description

A new complex from a popular Thai developer offers a unique opportunity to purchase apartments with a modern design and rare walking distance to the beach on the island of Phuket.

This project combines luxury and comfort in the coastal area, providing beautiful views of the sea or mountains.

### Description of apartments:

- **Bedrooms:** 1 - 3
- **Bathrooms:** 1 - 3
- **Living area:** 25 - 123 m<sup>2</sup>
- **Income:** actual rental income
- **Installment:** installment payments during the construction period

**Distance to the sea:** 500 m.

**Infrastructure of the complex:** The complex occupies an area of 22 hectares and includes 6 residential buildings of 7 floors, with a total of 814 apartments.

Residents are offered a wide range of common areas, such as a swimming pool, lobby lounge, fitness area, playground, spa and much more.

On the ground floor of the complex there is a club house, a leisure pavilion, areas for communication and relaxation, a business lounge, a coworking space and a theater with karaoke, which gives the project uniqueness and functionality.

**Features of the apartments:** Wide windows provide magnificent views of the sea or mountains, immersing you in the atmosphere of tropical nature. All apartments are equipped with modern technology and amenities that create conditions for comfortable living.

**Location advantages:** The complex is located just 500 meters from Nai Yang Beach, one of the best beaches in Phuket. In close proximity are Sirinat National Park, Phuket Airport, Dewa Phuket Resort and other famous places. The walking area along the shopping street to the beach allows you to enjoy all the delights of the coastal area.

**Distances to key facilities:**

- **Airport:** 5 minutes
- **Patong:** 40 minutes
- **Shopping center:** 20 minutes
- **Supermarket:** 5 minutes
- **Restaurants:** 2 minutes
- **Hospital:** 20 minutes
- **Golf club:** 20 minutes
- **Yacht club:** 15 minutes

**Additional benefits:** For clients of the complex, discounts of 5% or 10% apply depending on the chosen payment plan.

**Included in the price:** Finishing, plumbing, built-in kitchen, built-in wardrobes, air conditioners.

**Not included in the price:** Furniture package.

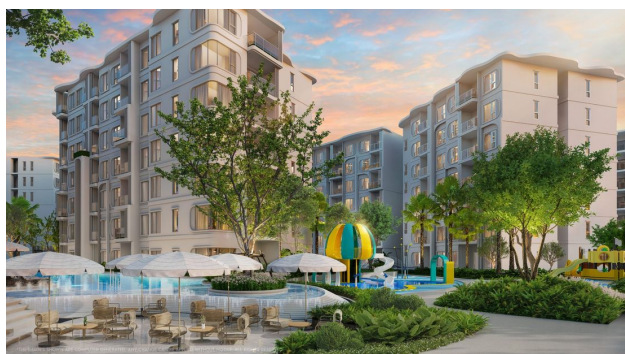


## Completion of the complex: 2026

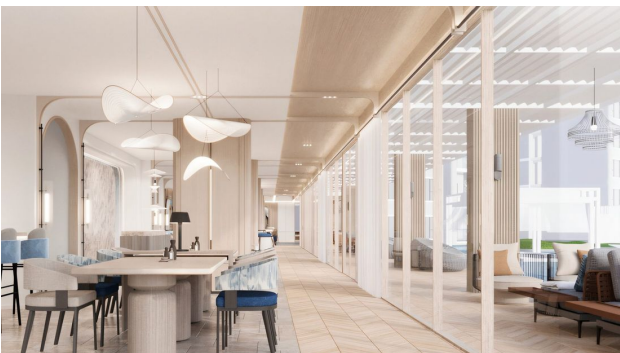
This complex offers a unique combination of modern comfort and natural beauty, which makes it an ideal choice for both personal residence and investment.

Information updated: 07.02.2025

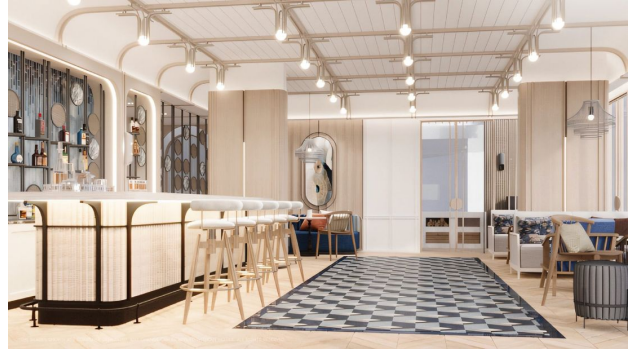
## Photo gallery















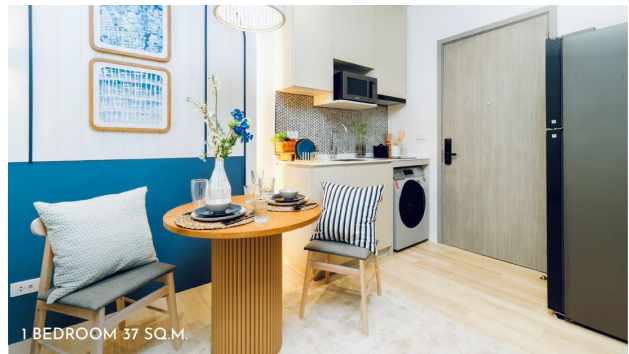
2 BEDROOM 56 SQ.M.



2 BEDROOM 56 SQ.M.



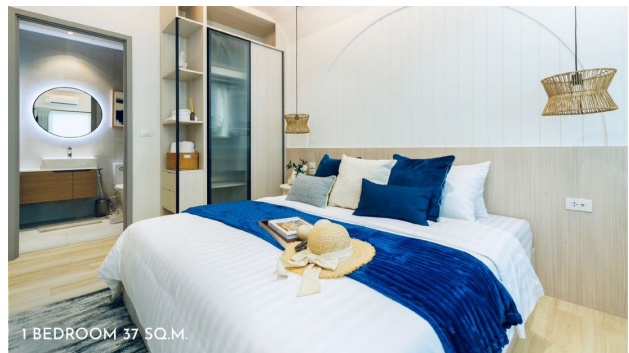
2 BEDROOM 56 SQ.M.



1 BEDROOM 37 SQ.M.



1 BEDROOM 37 SQ.M.



1 BEDROOM 37 SQ.M.



Scan the QR code to open the original page