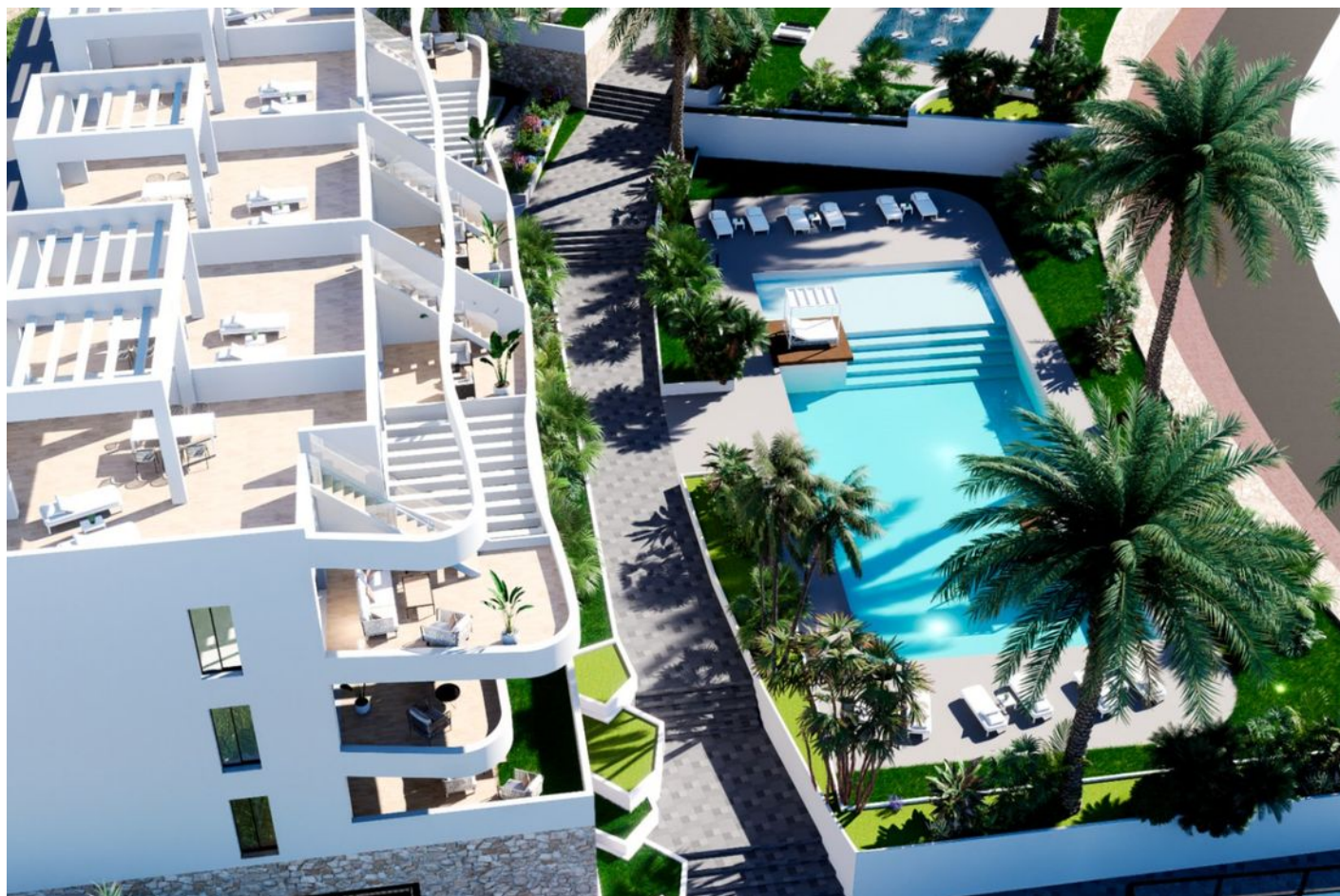






Apartment in a new unique residential complex in Finestrat-Benidorm (088237)



269 900 €

-  Floor area **68 m²**
-  Number of rooms **2 bedrooms**
-  Furnitures **Partly**
-  To the beach: **m**

 Location: **Spain, Benidorm**

 To the airport: **km**

 To the city
centre: **km**

Options

- ✓ Balcony/ Terrace
- ✓ Swimming pool
- ✓ Private territory
- ✓ Underground parking
- ✓ Elevator
- ✓ Playground

Description

Apartment in a new unique and exclusive residential complex in Finestrat-Benidorm, where every detail has been thought out to create maximum comfort and coziness.

This stylish apartment with two bedrooms and two bathrooms on the ground floor will be your oasis of tranquility and modern convenience.

With a spacious living area, flooded with natural light thanks to large side windows, you will be able to enjoy breathtaking panoramic views of the city of Benidorm and the endless Mediterranean Sea.

The quality materials used in the construction and the triple insulation of the external walls guarantee excellent sound insulation and efficient air conditioning, creating comfortable living conditions at any time of year.

The furnished kitchen fits harmoniously into the overall interior of the apartment, offering a functional space for cooking and socializing with family and friends.

Every detail has been thought out to provide you with maximum comfort and meet all the needs of modern life.

The urbanization offers its residents a wide range of amenities: three areas with swimming pools and a jacuzzi for relaxation, a children's area with fountains, a wellness area with a paddle tennis court and a gym, green areas for walking and relaxing.

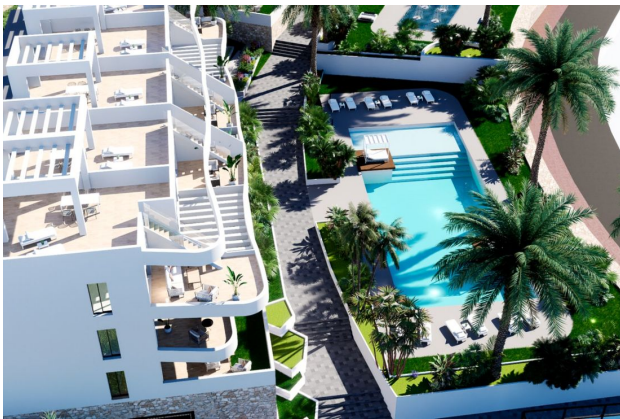
Covered **parking** and an elevator in all blocks add an additional level of convenience and security.

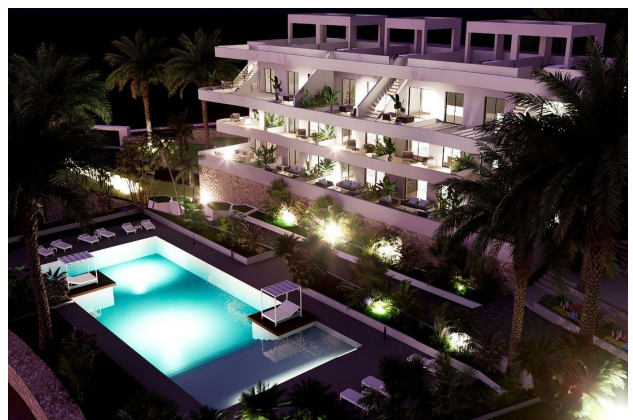
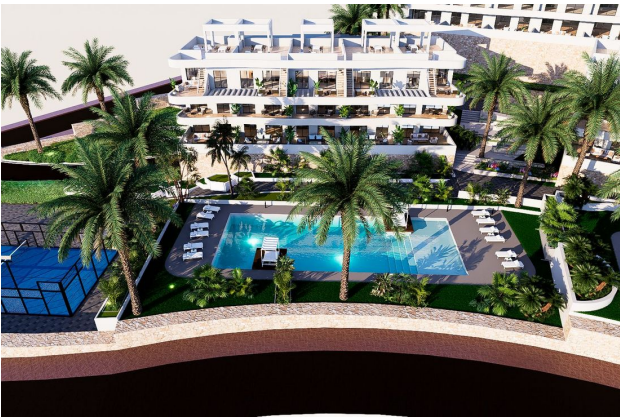
This is a truly unique opportunity for those looking for comfortable housing in one of the most prestigious areas of the Costa Blanca.

The commissioning of the complex is scheduled for 2025, which makes it an excellent choice for both permanent residence and investment.

Information updated: 28.08.2024

Photo gallery





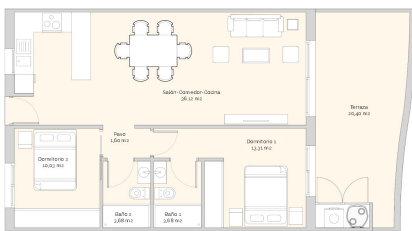




BLOQUE 2

PLANTA PRIMERA

VIVIENDA 28



Vivienda 28	
Superficie	88,65 m²
Área útil	26,10 m²
Superficie cubierta	88,65 m²

VERIFICAR HORARIOS Y ACCESOS EN LAS OBRAS DE OBRA EN EL PUNTO DE ENTREGA DEL MATERIAL. VERIFICAR HORARIOS Y ACCESOS EN LAS OBRAS DE OBRA EN EL PUNTO DE ENTREGA DEL MATERIAL.