








Spectacular apartment in front of the Segura River, near Guardamar (102237)



259 000 €

 Floor area	73 m ²
 Number of rooms	2 bedrooms
 Furnitures	Partly
 To the beach:	m
 Location:	Spain, Аликанте
 To the airport:	km
 To the city centre:	km

Options

- ✓ Warm floor
- ✓ Balcony/ Terrace
- ✓ Swimming pool
- ✓ Private territory
- ✓ Underground parking
- ✓ Elevator
- ✓ Playground

Description

Spectacular apartment in a privileged location in front **of the Segura River**, close to the marina and Guardamar beach, offering stunning views of Vega Baja.

The residential complex is a modern building of 32 apartments with two bedrooms and two bathrooms.

Apartment description:

- 2 bedrooms
- 73 m²
- 1st floor

Each apartment has **a spacious terrace of 23 m²**, and also includes an underground parking space and a private storage room.

The building is 9 storeys high and offers a variety of housing options, including penthouses with exclusive terraces and private solariums.

The complex has common areas for relaxation: a swimming pool with green areas, where natural grass is planted, creating a cozy and relaxing atmosphere.

Particular attention has been paid to the quality of materials: PVC windows with electric blinds, bathrooms with underfloor heating.

The price includes many nice extras, such as household appliances and Johnson or similar air conditioning, furniture, lighting, as well as essentials - from dishes and towels to Smart TV and even a coffee maker.

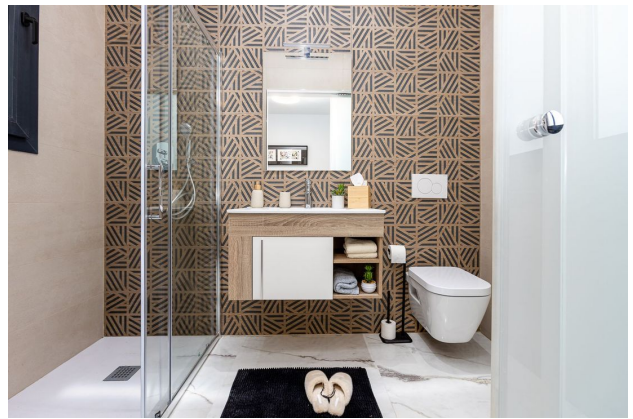
These apartments will be an ideal choice for those who value comfort, style and proximity to nature and the sea.

Completion of construction is expected in 2025.

Information updated: 05.09.2024

Photo gallery



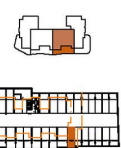




RESIDENCIAL

01	02	03	04	05	06	07	08	09	10	11	12
01	02	03	04	05	06	07	08	09	10	11	12
01	02	03	04	05	06	07	08	09	10	11	12
01	02	03	04	05	06	07	08	09	10	11	12
01	02	03	04	05	06	07	08	09	10	11	12
01	02	03	04	05	06	07	08	09	10	11	12
01	02	03	04	05	06	07	08	09	10	11	12
01	02	03	04	05	06	07	08	09	10	11	12
01	02	03	04	05	06	07	08	09	10	11	12

SUPERFICIE VIVIENDA	73.21 m2	VIVIENDA 103
SUPERFICIE TERRAZA	24.82 m2	PLANTA PRIMERA



0 0.5 1 2 3
ESCALA GRÁFICA



Scan the QR code to open the original page