


Apartment in a new residential complex in the heart of Orihuela Costa (106237)




259 000 €

 Floor area **75 m²**

 Number of rooms **2 bedrooms**

 Furnitures **Full**

 To the beach: **m**

 Location: **Spain, Аликанте**

 To the airport: km

 To the city
centre: km

Options

- ✓ White goods
- ✓ Furniture
- ✓ Warm floor
- ✓ Balcony/ Terrace
- ✓ Swimming pool
- ✓ Private territory
- ✓ Playground

Description

A beautiful apartment with 2 bedrooms and 2 bathrooms, located in a new residential complex in the heart **of Orihuela Costa**.

This is an ideal place for comfortable living, where modern design, convenient location and high-quality finishes combine.

Description of the apartment:

- 2 bedrooms
- 2 bathrooms
- area 75 m2
- 2 floor
- terrace 22 m2

The residential complex includes 108 fully furnished apartments, each of which is equipped with spacious terraces and an individual elevator.

For your convenience, the price of the apartment includes a parking space, a private storage room, as well as a full package of furniture and household appliances, including air conditioning from LG or Hisense.

The apartment is equipped with roller blinds, lamps, Smart TV, coffee maker, toaster and a full set of kitchen utensils. The bathrooms have electric underfloor heating for maximum comfort.

The complex offers a variety of amenities: swimming pool, gym, sauna and communal jacuzzi.

Large green areas with a playground, petanque courts and chill-out areas create an atmosphere of privacy and tranquility.

The complex is located in a quiet area surrounded by greenery, just 500 meters from a supermarket and a bus stop. The famous Villamartin golf course, as well as restaurants and entertainment venues, are a 5-minute drive away.

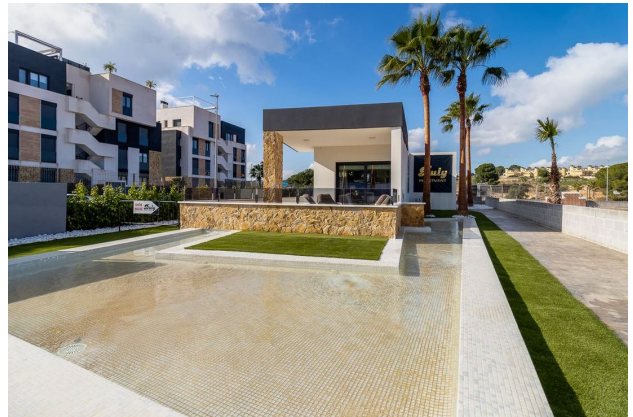
The highest quality materials, such as PVC windows with electric blinds and remote control, make this apartment an ideal option for those looking for comfort and style in one of the best areas of Orihuela Costa.

Completion date: 2025.

Information updated: 06.09.2024

Photo gallery











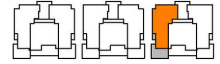
0 1 2 3 4 5 6 7 8 9 10
ESCALA GRÁFICA

RESIDENCIAL

BLOQUE 8



SUPERFICIE VIVIENDA	75.28 m ²	VIVIENDA 807
SUPERFICIE TERRAZA	20.48 m ²	PLANTA SEGUNDA



Scan the QR code to open the original page