





# Modern villa in the picturesque area of Finestrat, with stunning views (122237)



**615 000 €**

-  Floor area **107 m<sup>2</sup>**
-  Number of rooms **3 bedrooms**
-  Furnitures **Partly**
-  To the beach: **3000 m**

 Location: **Spain, Аликанте**

 To the airport: **km**

 To the city  
centre: **km**

## Options

- ✓ Balcony/ Terrace
- ✓ Swimming pool
- ✓ Private territory

## Description

A modern villa located in the picturesque area **of Finestrat**, on a slope with stunning views, is the perfect combination of comfort and aesthetics.

Built in 2024, it offers a unique opportunity to live in a new building with a high level of amenities.

**With a total plot of 352 m<sup>2</sup>**, the villa includes **three bedrooms, two modern bathrooms**, a spacious living room and a stylish American kitchen.

The usable area of the **villa is 90 m<sup>2</sup>, and the built area is 107 m<sup>2</sup>**, which creates a comfortable space for living.

**The open terrace of 85 m<sup>2</sup>** will be the perfect place to relax in the fresh air, where you can enjoy the picturesque views.

The villa is also equipped with **a private pool** and a **ducted air conditioning system**, providing a comfortable temperature at any time of the year.

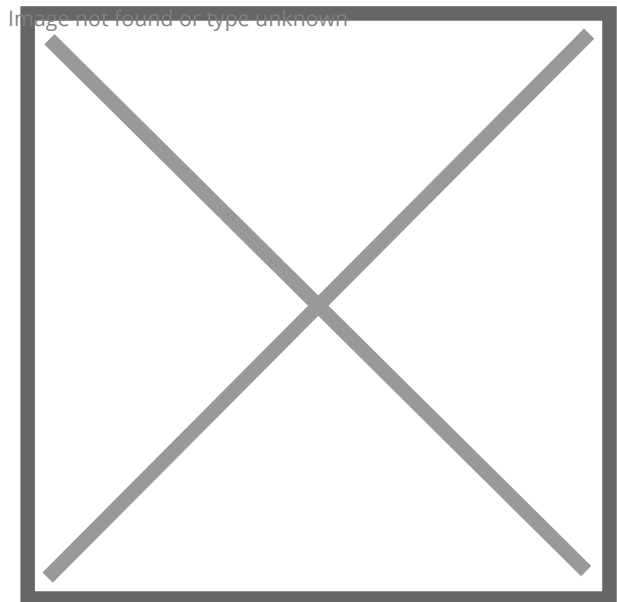
High-quality double glazed windows and an armored entrance door add additional security and thermal insulation.

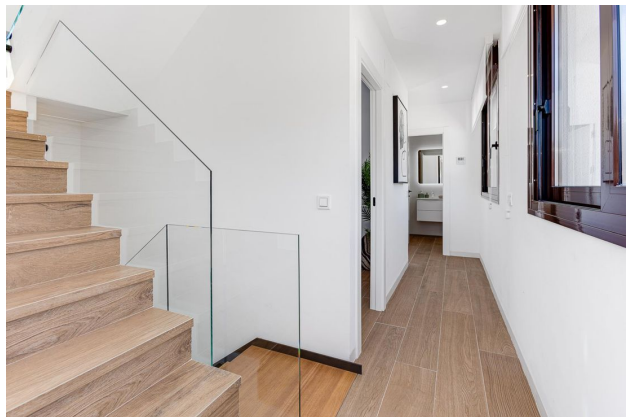
**The villa has convenient parking,** and the distance to the sea is only 3 km, which makes it an excellent choice for those who value proximity to the beach and at the same time prefer privacy and natural beauty.

This house is ideal for family living or as an investment in a comfortable life on the Costa Blanca.

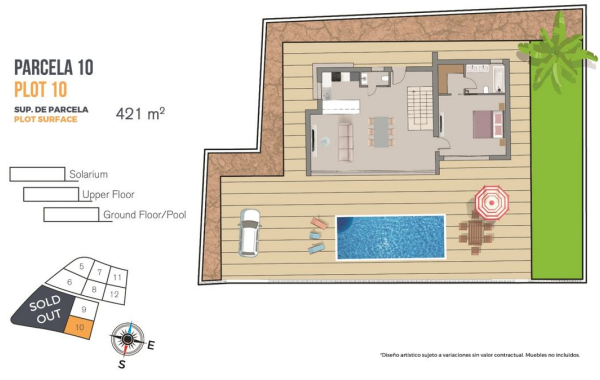
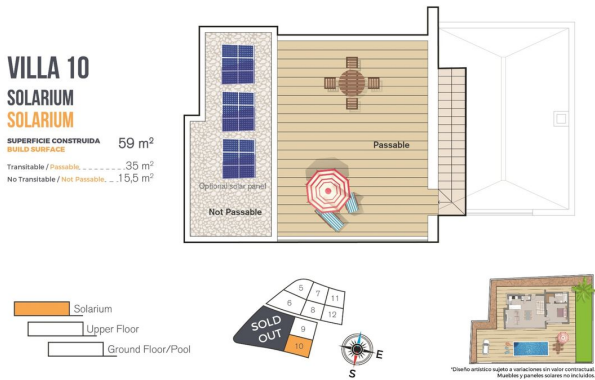
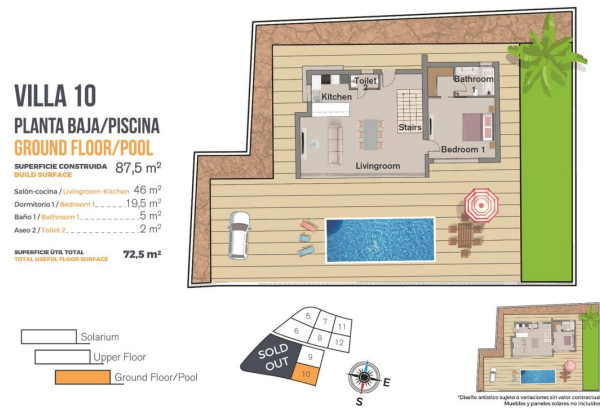
**Information updated: 10.09.2024**

## Photo gallery









# VILLA 10

## PLANTA ALTA

### UPPER FLOOR

**SUPERFICIE CONSTRUIDA**  
TOTAL BUILT SURFACE

**59 m<sup>2</sup>**

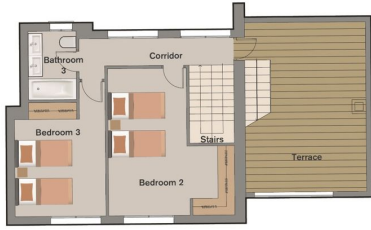
Pasillo / Corridor ..... 6 m<sup>2</sup>  
 Dormitorio 2 / Bedroom 2 ..... 19,5 m<sup>2</sup>  
 Baño 2 / Bathroom 3 ..... 4 m<sup>2</sup>  
 Dormitorio 3 / Bedroom 3 ..... 14 m<sup>2</sup>  
 Terraza / Terrace ..... 28 m<sup>2</sup>

**SUPERFICIE ÚTIL TOTAL**  
TOTAL USEFUL SURFACE

**43,5 m<sup>2</sup>**

**TERRAZA**  
Terrace

**27,5 m<sup>2</sup>**



- Solarium
- Upper Floor
- Ground Floor/Pool



\*Cualquier artículo sujeto a relaciones en valor contractual. Muebles y paredes sereno no incluido.