





Modern villa in the picturesque area of Finestrat, with stunning views (122237)



615 000 €

-  Floor area **107 m²**
-  Number of rooms **3 bedrooms**
-  Furnitures **Partly**
-  To the beach: **3000 m**

 Location: **Spain, Аликанте**

 To the airport: **km**

 To the city
centre: **km**

Options

- ✓ Balcony/ Terrace
- ✓ Swimming pool
- ✓ Private territory

Description

A modern villa located in the picturesque area **of Finestrat**, on a slope with stunning views, is the perfect combination of comfort and aesthetics.

Built in 2024, it offers a unique opportunity to live in a new building with a high level of amenities.

With a total plot of 352 m², the villa includes **three bedrooms, two modern bathrooms**, a spacious living room and a stylish American kitchen.

The usable area of the **villa is 90 m², and the built area is 107 m²**, which creates a comfortable space for living.

The open terrace of 85 m² will be the perfect place to relax in the fresh air, where you can enjoy the picturesque views.

The villa is also equipped with **a private pool** and a **ducted air conditioning system**, providing a comfortable temperature at any time of the year.

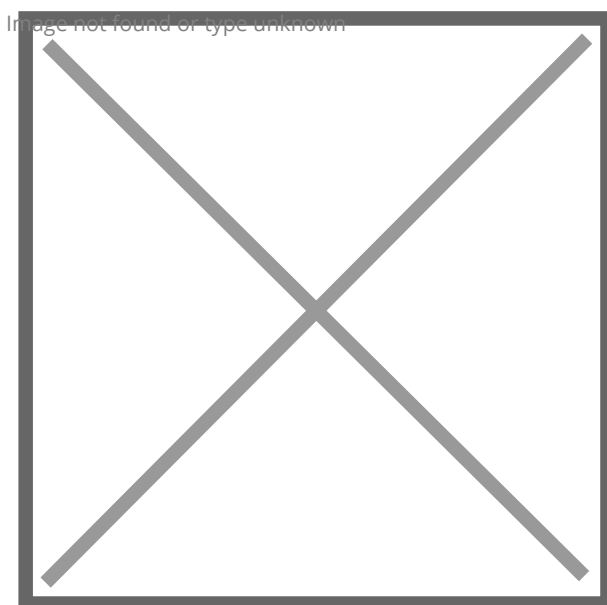
High-quality double glazed windows and an armored entrance door add additional security and thermal insulation.

The villa has convenient parking, and the distance to the sea is only 3 km, which makes it an excellent choice for those who value proximity to the beach and at the same time prefer privacy and natural beauty.

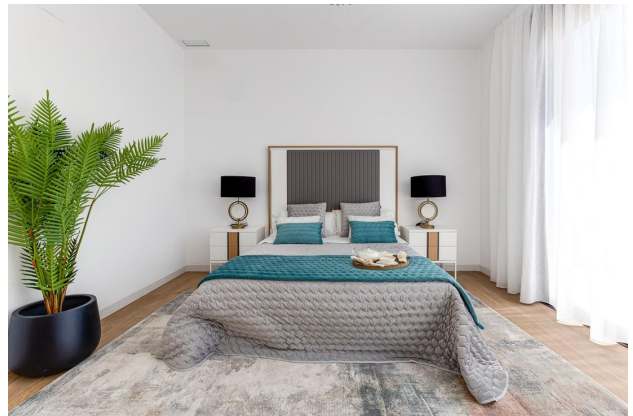
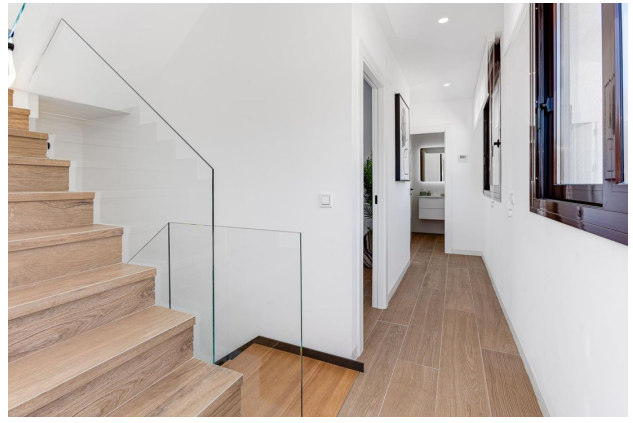
This house is ideal for family living or as an investment in a comfortable life on the Costa Blanca.

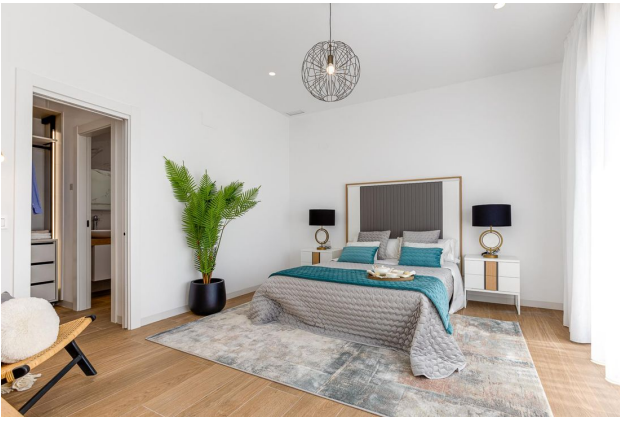
Information updated: 10.09.2024

Photo gallery











VILLA 10

PLANTA BAJA/PISCINA

GROUND FLOOR/POOL

SUPERFICIE CONSTRUIDA
BUILD SURFACE 87,5 m²

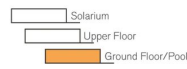
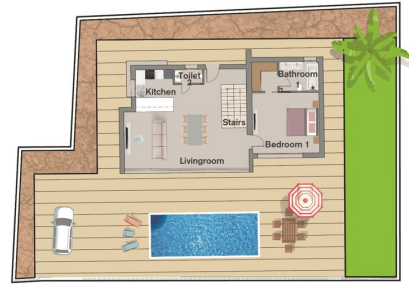
Salón cocina / Livingroom/Kitchen 46 m²

Dormitorio 1 / Bedroom 1, ... 19,5 m²

Baño 1 / Bathroom 1, ... 5 m²

Aseo 2 / Toilet 2, ... 2 m²

SUPERFICIE ÚTIL TOTAL
TOTAL USEFUL FLOOR SURFACE 72,5 m²



*Diseño artístico sujeto a variaciones sin valor contractual. Muebles y paneles solares no incluidos.

VILLA 10

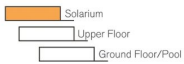
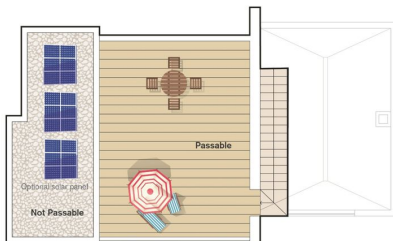
SOLARIUM

SOLARIUM

SUPERFICIE CONSTRUIDA
BUILD SURFACE 59 m²

Transitable / Passable, ... 35 m²

No Transitable / Not Passable, ... 15,5 m²



*Diseño artístico sujeto a variaciones sin valor contractual. Muebles y paneles solares no incluidos.

PARCELA 10

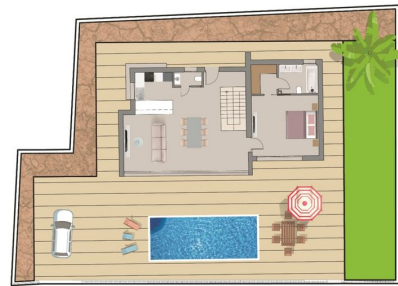
PLOT 10

SUP. DE PARCELA
PLOT SURFACE 421 m²

Solarium

Upper Floor

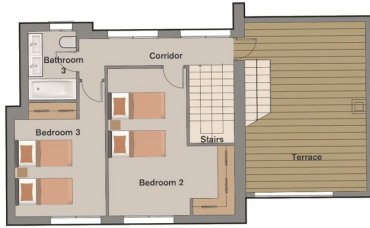
Ground Floor/Pool



*Diseño artístico sujeto a variaciones sin valor contractual. Muebles no incluidos.

VILLA 10 PLANTA ALTA UPPER FLOOR

SUPERFICIE CONSTRUIDA TOTAL BUILT SURFACE	59 m²
Pasillo / Corridor	6 m ²
Dormitorio 2 / Bedroom 2	19,5 m ²
Baño 2 / Bathroom 3	4 m ²
Dormitorio 3 / Bedroom 3	14 m ²
Terraza / Terrace	28 m ²
SUPERFICIE ÚTIL TOTAL TOTAL USEFUL SURFACE	43,5 m²
TERRAZA Terrace	27,5 m²



- Solarium
- Upper Floor
- Ground Floor/Pool



*Cadafo artistico según a relaciones en valor contractual.
Muebles y plantas secas no incluidas.



Scan the QR code to open the original page