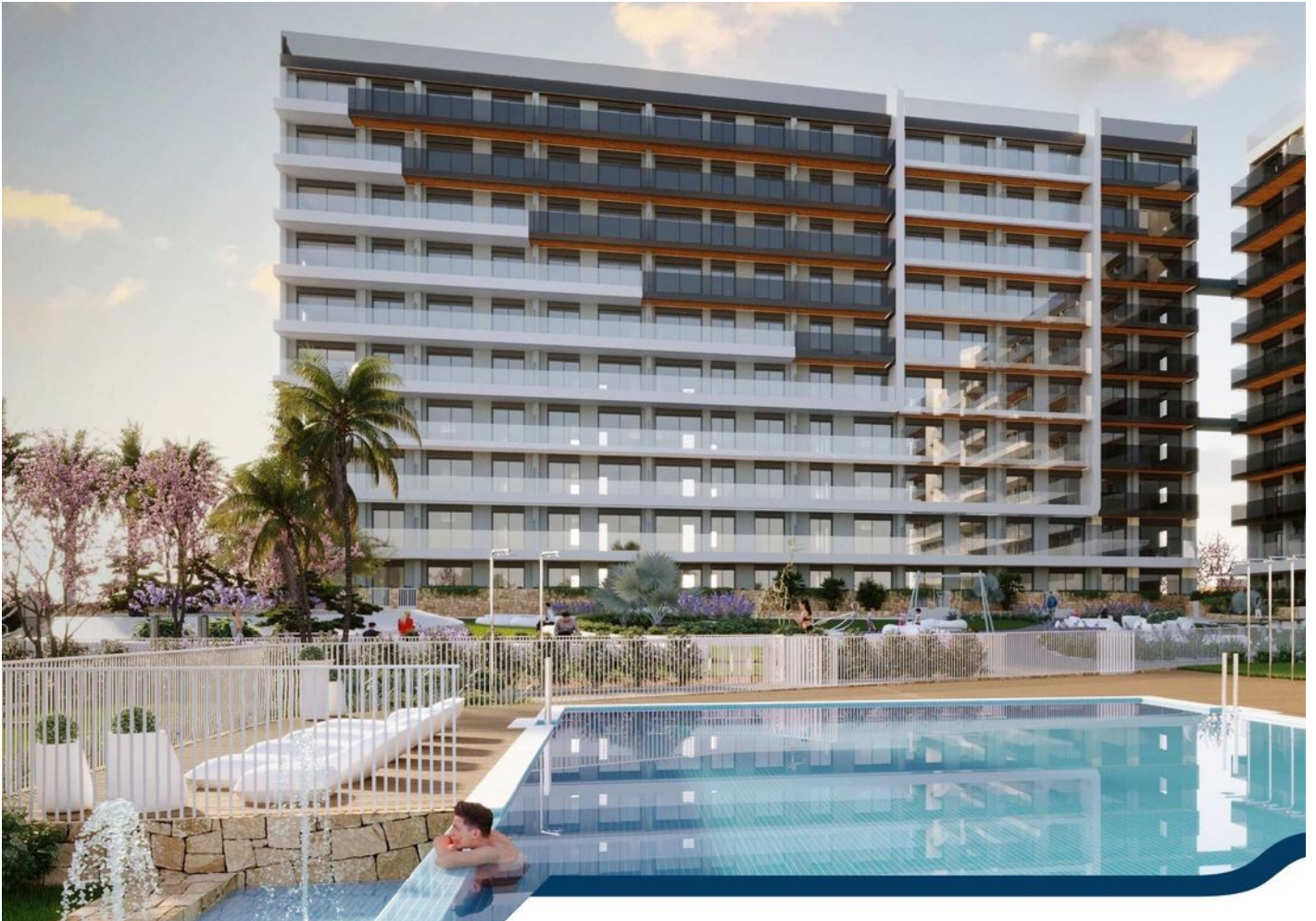







# Modern apartments in Punta Prima, Torrevieja (196237)



**394 000 €**

-  Floor area **116 m<sup>2</sup>**
-  Number of rooms **3 bedrooms**
-  Furnitures **Partly**
-  To the beach: **400 m**
-  Location: **Spain, Torrevieja**

 To the airport: km

 To the city  
centre: km

## Options

- ✓ Balcony/ Terrace
- ✓ Swimming pool
- ✓ Private territory
- ✓ Elevator
- ✓ Playground

## Description

Discover a unique opportunity to become the owner of a luxury home in a new residential complex located in Punta Prima, just 400 meters from the beach.

This project includes 220 apartments of different typologies, offering the ideal conditions for comfortable and modern life on the coast.

### Main features:

- **Property type:** Penthouse
- **Bedrooms:** 3 spacious bedrooms, providing comfortable living for the whole family.
- **Bathrooms:** 2 modern bathrooms with quality finishes.
- **Useful area:** 99 m<sup>2</sup>, including a spacious living room and an American kitchen, ideal for family gatherings.
- **Terrace:** 19 m<sup>2</sup> of covered terrace with magnificent views of green areas and panoramic sea views.
- **Floor:** 8th, providing stunning views and additional privacy.
- **Construction:** Completion is scheduled for summer 2025.

### Amenities and infrastructure:

- **Common areas:** The residential complex has impressive common areas including extensive gardens, a main swimming pool, a heated lap pool, a children's pool, a jacuzzi, a gym with modern exercise equipment, a sauna, and areas for active recreation such as a paddle tennis court, petanque, chess, table tennis and a children's playground.
- **Parking:** Private parking is included with a pre-installed charging point for electric cars.
- **Air conditioning:** Ducted air conditioning ensures a comfortable temperature at any time of year.
- **Storage and laundry:** For easy storage and care of belongings.
- **Double glazing and security door:** Guarantee of safety and energy efficiency.
- **Lift:** A modern lift provides easy access to all floors.

### Benefits:

These south-facing penthouses offer unforgettable sea views and make the most of natural light. You can also choose ground floor apartments with private gardens or other 2 or 3 bedroom layouts.

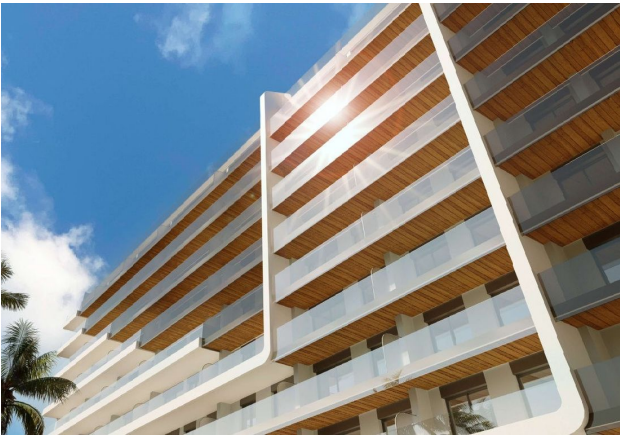
This development is the perfect place for those looking for a balance between tranquility and an active lifestyle.

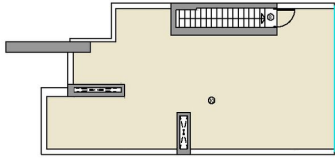
**Information updated: 26.09.2024**

## Photo gallery









VIVIENDA TIPO **1A**  
/ HOUSE TYPE

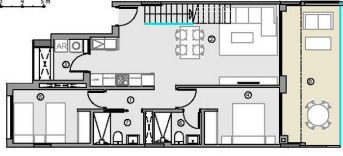
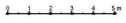
PROYECTO DE CONSTRUCCIÓN DE UN COMPLEJO RESIDENCIAL DE VIVIENDAS EN PUNTA PIRMA

**SUPERFICIES ÚTILES / ÚSEFUL AREA**

ÁREAS DE CONSTRUCCIÓN ÚTIL (SIN REVESTIR)	
1. HAB. DUEÑO	13,2 m <sup>2</sup>
2. HAB. DUEÑA	13,2 m <sup>2</sup>
3. ALMACÉN	4,4 m <sup>2</sup>
4. ALMACÉN	4,4 m <sup>2</sup>
5. ALMACÉN	4,4 m <sup>2</sup>
6. ALMACÉN	4,4 m <sup>2</sup>
7. ALMACÉN	4,4 m <sup>2</sup>
8. ALMACÉN	4,4 m <sup>2</sup>
9. ALMACÉN	4,4 m <sup>2</sup>
10. ALMACÉN	4,4 m <sup>2</sup>
<b>SUB-TOTAL SUPERFICIES ÚTILES</b>	<b>68,8 m<sup>2</sup></b>

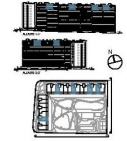
SUPERFICIES ÚTILES - ÚSEFUL AREA	
1. ALMACÉN	4,4 m <sup>2</sup>
2. ALMACÉN	4,4 m <sup>2</sup>
3. ALMACÉN	4,4 m <sup>2</sup>
4. ALMACÉN	4,4 m <sup>2</sup>
5. ALMACÉN	4,4 m <sup>2</sup>
6. ALMACÉN	4,4 m <sup>2</sup>
7. ALMACÉN	4,4 m <sup>2</sup>
8. ALMACÉN	4,4 m <sup>2</sup>
9. ALMACÉN	4,4 m <sup>2</sup>
10. ALMACÉN	4,4 m <sup>2</sup>
<b>SUB-TOTAL SUPERFICIES ÚTILES</b>	<b>44,0 m<sup>2</sup></b>



mayo 2024

**SUPERFIC. CONSTRUIDAS / BUILT AREA**

1. ALMACÉN	4,4 m <sup>2</sup>
2. ALMACÉN	4,4 m <sup>2</sup>
3. ALMACÉN	4,4 m <sup>2</sup>
4. ALMACÉN	4,4 m <sup>2</sup>
5. ALMACÉN	4,4 m <sup>2</sup>
6. ALMACÉN	4,4 m <sup>2</sup>
7. ALMACÉN	4,4 m <sup>2</sup>
8. ALMACÉN	4,4 m <sup>2</sup>
9. ALMACÉN	4,4 m <sup>2</sup>
10. ALMACÉN	4,4 m <sup>2</sup>
<b>SUB-TOTAL SUPERFICIAS CONSTRUIDAS</b>	<b>44,0 m<sup>2</sup></b>



220 VIVIENDAS EN PUNTA PIRMA.

EL DISEÑO ARCHITECTÓNICO Y LA CONSTRUCCIÓN DE ESTE PROYECTO DE CONSTRUCCIÓN DE UN COMPLEJO RESIDENCIAL DE VIVIENDAS EN PUNTA PIRMA SE REALIZA DE ACUERDO CON LAS DISPOSICIONES TÉCNICAS DEL CÓDIGO DE CONSTRUCCIÓN DE LA CIUDAD DE BOGOTÁ Y DE LA LEY 1733 DE 2014 QUE REGULAN LA CONSTRUCCIÓN EN EL DEPARTAMENTO DE BOGOTÁ D.C. Y EN EL DEPARTAMENTO DE BOGOTÁ D.C. Y EN EL DEPARTAMENTO DE BOGOTÁ D.C. Y EN EL DEPARTAMENTO DE BOGOTÁ D.C.