


New build apartment in Punta Prima, just 400 meters from the sea (197237)



339 000 €

 Floor area **117 m²**

 Number of rooms **3 bedrooms**

 Furnitures **Partly**

 To the beach: **400 m**

 Location: **Spain, Torrevieja**

 To the airport: **km**

 To the city
centre: **km**

Options

- ✓ Balcony/ Terrace
- ✓ Swimming pool
- ✓ Private territory
- ✓ Security
- ✓ Elevator
- ✓ Playground

Description

A spacious 3-bedroom apartment with 2 bathrooms is located on the third floor of a modern residential complex and offers comfort and convenience for the whole family.

The apartment is south-facing, providing plenty of natural light, and the **20 m² terrace** will give you the opportunity to enjoy beautiful views of the green area.

Inside you will find 92 m² of usable space and **117 m² of built area**, with a well-thought-out layout that includes an American kitchen, a cozy living room, and a laundry room for your convenience.

The complex is equipped with everything you need for modern life: ducted air conditioning, heat pump for heating, double glazing, and a security system with a security door.

The residential complex offers excellent common areas: a summer swimming pool, a heated winter pool, a children's pool, a jacuzzi, a gym, a sauna, and many entertainment areas, including areas for playing petanque, chess, table tennis and paddle tennis. There is a playground for children, and for those who enjoy active recreation, there is a bicycle parking

lot.

Additionally, the price of the apartment includes a parking space and a storage room.

Construction will be completed by the summer of 2026, with the possibility of installments for the entire construction period.

Don't miss the chance to become the owner of a modern apartment in one of the best places to live and relax on the coast!

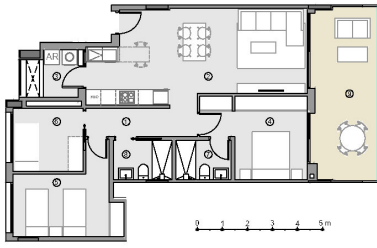
Information updated: 27.09.2024

Photo gallery





VIVIENDA TIPO 4
HOUSE TYPE 4

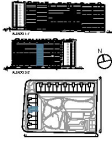


SUPERFICIES ÚTILES / USEFUL AREA

SUPERFICIE ÚTIL CONSTRUIDA ÚTILIZANDO VOLUMEN	
1) HED. ALICATADO	12,10 m ²
2) HED. ALICATADO - COCINA	2,80 m ²
3) HED. ALICATADO - PISO	1,80 m ²
4) HED. ALICATADO - PASADIZO	1,80 m ²
5) HED. ALICATADO - ALCOFRAS	1,80 m ²
6) HED. ALICATADO	1,80 m ²
7) HED. ALICATADO	1,80 m ²
8) HED. ALICATADO	1,80 m ²
SUM. ÚTIL CONSTRUIDA (USO ESTÁNDAR)	36,90 m²
9) HED. ALICATADO - PASADIZO	1,80 m ²
10) HED. ALICATADO - PASADIZO	1,80 m ²
SUM. ÚTIL CONSTRUIDA ÚTILIZANDO VOLUMEN	38,70 m²

SUPERFICIE CONSTRUIDA ÚTIL AREA

11) COCINA	1,80 m ²
12) COCINA	1,80 m ²
13) COCINA	1,80 m ²
14) COCINA	1,80 m ²
SUM. COCINA ÚTIL CONSTRUIDA ÚTIL AREA	7,20 m²



mayo 2024

120 VIVIENDAS EN PARCELA S-A, SEÑORIO DE FUJINA FRIMA.

SE ACEPTA RESPONSABILIDAD AL 100% CON RESPECTO A LA PRECISIÓN DE LOS DATOS Y A LA VERACIDAD DE LA INFORMACIÓN TECNICA.
SE ACEPTA RESPONSABILIDAD AL 100% CON RESPECTO A LA PRECISIÓN DE LA INFORMACIÓN TECNICA.
SE ACEPTA RESPONSABILIDAD AL 100% CON RESPECTO A LA PRECISIÓN DE LA INFORMACIÓN TECNICA.