






# Modern apartment in a new project in Torrevieja, just 8 minutes from the beach Del Cura (200237)



**345 000 €**

-  Floor area **132 m<sup>2</sup>**
-  Number of rooms **3 bedrooms**
-  Furnitures **Partly**
-  To the beach: **500 m**
-  Location: **Spain, Torrevieja**

 To the airport:    **km**

 To the city  
centre:                    **km**

## Options

- ✓ Warm floor
- ✓ Balcony/ Terrace
- ✓ Swimming pool
- ✓ Private territory
- ✓ Elevator
- ✓ Playground

## Description

A new residential project in the center **of Torrevieja**, offering exclusive **3-bedroom apartments with 3 or 4 bathrooms.**

The building is located just 8 minutes walk from the central beach Del Cura, which makes it an ideal place to live and relax.

Each apartment is finished with luxury finishes, including PVC windows with increased sound and heat insulation, built-in wardrobes with wooden trim, thoughtful lighting, as well as fully equipped kitchens with BOSCH appliances.

The bathrooms are equipped with modern showers and heated floors, which ensures maximum comfort.

For residents of the complex, there are two common relaxation **areas on the solarium, where you can enjoy a Finnish sauna, a heated pool and a barbecue area. The penthouses offer the added benefit of a private solarium with shower and barbecue, as well as a private pool.**

**A 14 m<sup>2</sup> parking space** is available for an extra € 30,000, adding convenience and security to your home.

**The 132 m<sup>2</sup> apartment**, located on the ground floor, has a 15 m<sup>2</sup> terrace with views of the city, creating a pleasant space for relaxing outdoors.

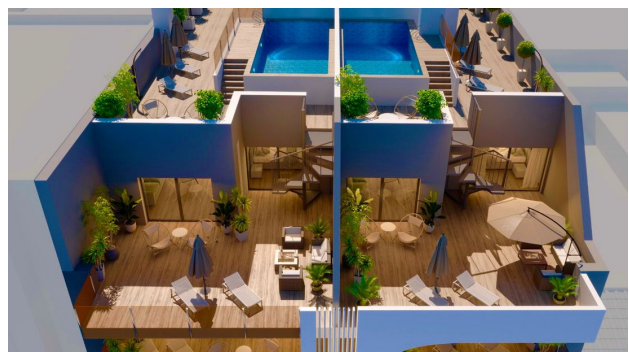
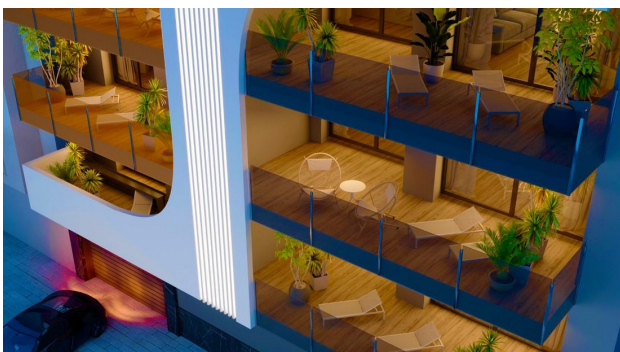
The MITSUBISHI ducted air conditioning and security door complete the range of quality solutions that ensure comfort and security.

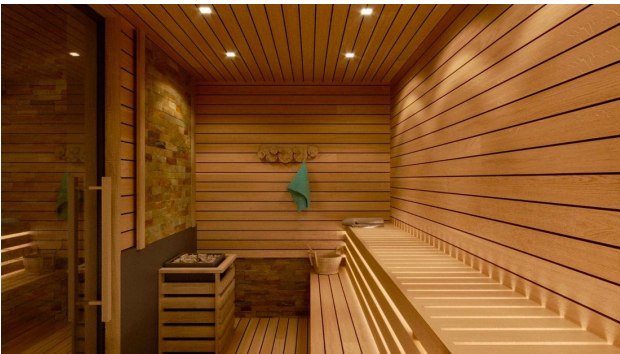
Hurry, most apartments are already reserved.

This project offers a rare opportunity to purchase a property in one of the best areas of Torrevieja, just a few steps from the sea and all the necessary amenities.

**Information updated: 27.09.2024**

## Photo gallery







**RESIDENCIAL**

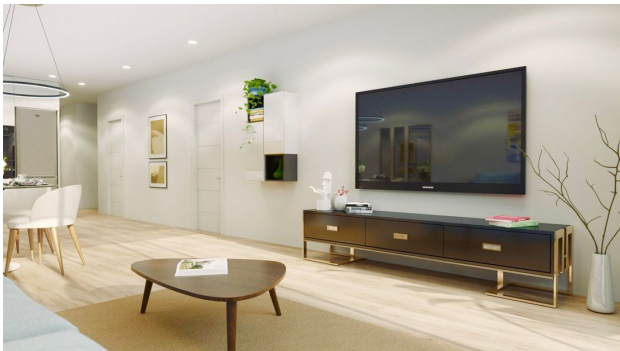


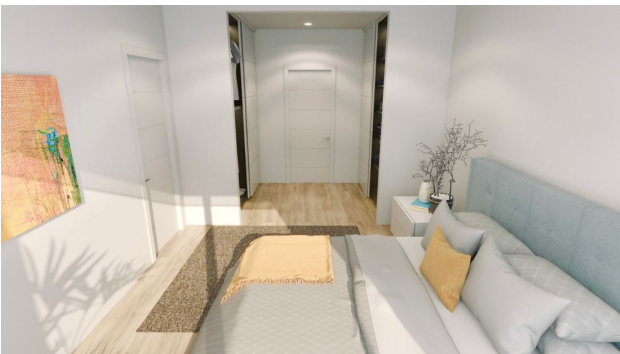
**PLANTA 1º**

VIVIENDA 1-A	SUP. ÚTIL
PASILLO	7,15
DORM. 1	16,04
DORM. 2	10,28
DORM. 3	10,43
BAÑO 1	4,39
BAÑO 2	3,58
BAÑO 3	4,08
SALÓN-COMEDOR-COCINA	36,21
TERRAZA 1	13,62
TERRAZA 2	3,39
<b>TOTAL SUP. ÚTIL VIVIENDA</b>	<b>109,17 m2</b>
<b>TOTAL SUP. CONSTR.</b>	<b>134,66 m2</b>
VV + PP + 2C	



Plano orientativo sujeto a modificaciones en proyecto. No constituye un documento contractual. Será sustituido por otro e nel momento de la firma de la compra-venta. La distribución de los muebles de cocina, como del resto de la decoración, es meramente orientativa.





Scan the QR code to open the original page