






New project in Torrevieja, just 8 minutes walk from the central beach Del Cura (201237)



385 000 €

-  Floor area **142 m²**
-  Number of rooms **3 bedrooms**
-  Furnitures **Partly**
-  To the beach: **m**
-  Location: **Spain, Torrevieja**

 To the airport: km

 To the city
centre: km

Options

- ✓ Warm floor
- ✓ Balcony/ Terrace
- ✓ Swimming pool
- ✓ Private territory
- ✓ Elevator

Description

An exclusive residential project in the heart of **Torre Vieja** offers the perfect combination of luxury, comfort and proximity to one of the most popular beaches in the region.

The building includes only 8 spacious apartments with **three bedrooms and three or four bathrooms**, ensuring privacy and comfort for each resident.

Each apartment is thought out to the smallest detail and is delivered with a first-class finish: PVC windows with increased sound and heat insulation, built-in wardrobes, lighting, a modern kitchen with appliances from the leading European brand BOSCH, as well as fully furnished bathrooms with showers.

The penthouses are equipped with private solariums with showers, barbecue and swimming pool.

The complex offers a wide range of amenities, including **a communal pool, a Finnish sauna on the solarium, recreation areas with changing rooms and two common areas for relaxation.**

The territory also includes **parking spaces of 14 m²**, worth €30,000.

An elevator and MITSUBISHI ducted air conditioning add additional comfort.

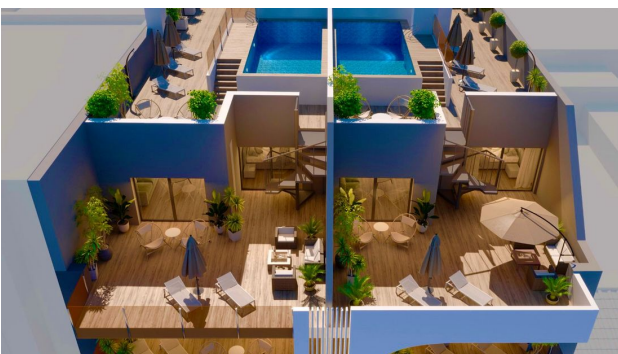
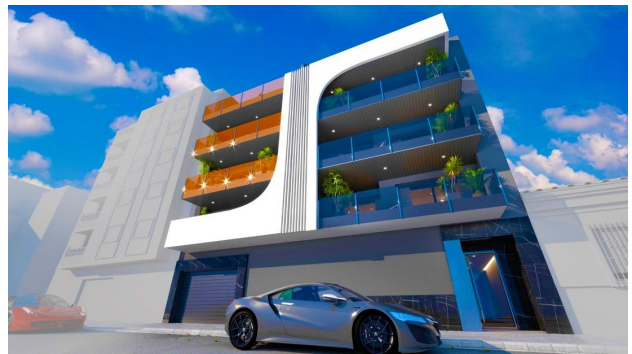
Don't miss the chance to become the owner of one of these unique apartments.

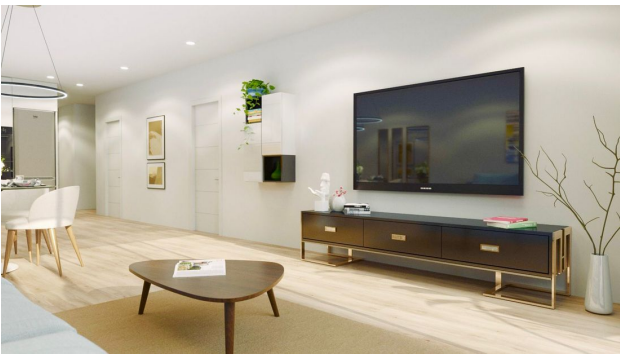
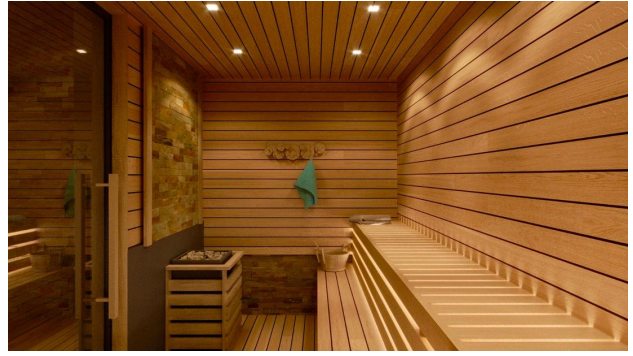
Most of them are already booked.

Just 8 minutes walk from the central beach of Del Cura, which makes this project an ideal option for those who value convenience and high quality of life.

Information updated: 27.09.2024

Photo gallery









RESIDENCIAL



PLANTAS 2º-3º

VIVIENDA 2A-3A	SUP. ÚTIL
PASILLO	7,44
DORM. 1	16,39
DORM. 2	14,19
DORM. 3	12,57
BAÑO 1	7,21
BAÑO 2	3,89
BAÑO 3	4,04
ASEO	2,07
SALÓN-COMEDOR-COCINA	35,74
TERRAZA 1	13,65
TOTAL SUP. ÚTIL VIVIENDA	117,19m2
TOTAL SUP. CONSTR. VIV + PP +2C	144,93 m2

Plano orientativo sujeto a modificaciones en proyecto. No constituye un documento contractual. Será sustituido por otro e nel momento de la firma de la compra-venta. La distribución de los muebles de cocina, como del resto de la decoración, es meramente orientativa.