





Spacious apartment with terrace by Levante beach in Santa Pola (220237)



300 000 €

-  Floor area **144 m²**
-  Number of rooms **3 bedrooms**
-  Furnitures **Partly**
-  To the beach: **150 m**

 Location: **Spain, Аликанте**

 To the airport: **km**

 To the city
centre: **km**

Options

- ✓ Sea view
- ✓ Balcony/ Terrace
- ✓ Swimming pool
- ✓ Private territory

Description

A spacious apartment with three bedrooms and two bathrooms is located in one of the best areas of Santa Pola - **just 150 meters from Levante beach.**

The terrace of 30 m² offers magnificent views of the bay, making it an ideal place to relax and enjoy the sea breeze.

The usable area of the apartment is 83 m², **the total area is 144 m²**, which ensures comfortable living.

The complex is completely closed and is located just 50 meters from the new shopping center, where there are cinemas, supermarkets, shops and cafes.

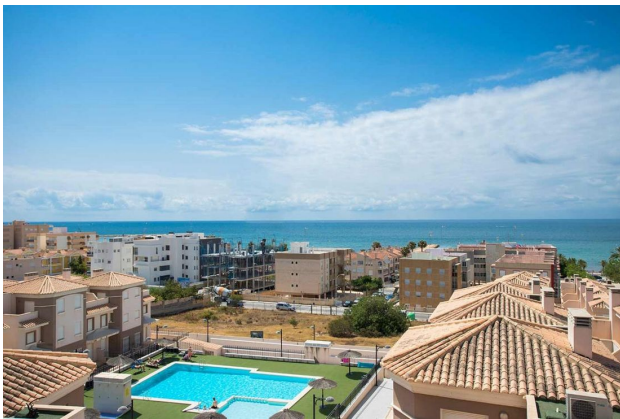
The complex has a magnificent **swimming pool**, surrounded by buildings where you can buy penthouses, as well as bungalows.

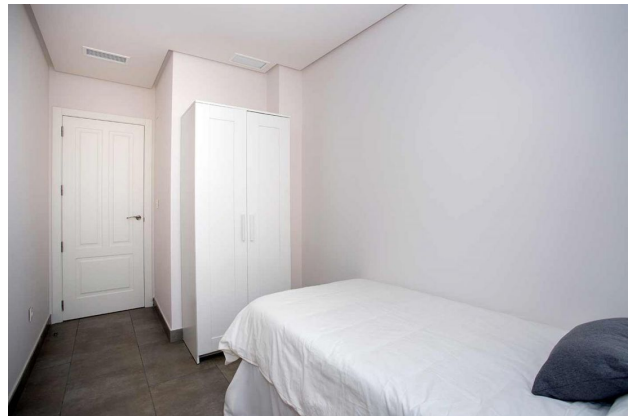
The apartment is equipped with an independent kitchen and air conditioning with pre-installation.

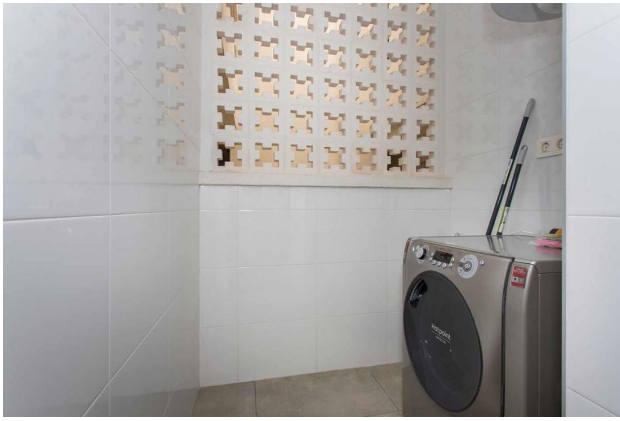
Additionally, **parking** spaces and a storage room are provided for convenience.

Information updated: 04.10.2024

Photo gallery







PLANTA PISO 2
VIVIENDA TIPO BG3



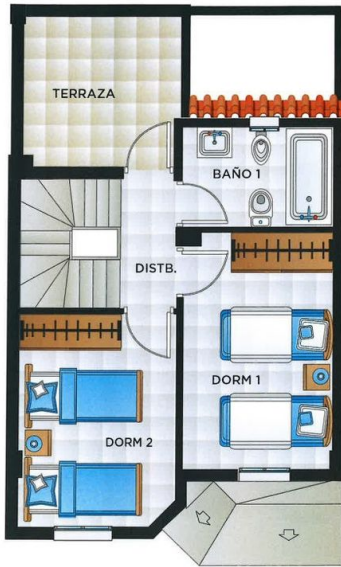
SUPERFICIE ÚTIL

PLANTA PISO 2

DORMITORIO 3: 11.43 m²
 BAÑO 2: 3.64 m²
 ESCALERA: 2.35 m²

TOTAL: 17.42 m²
 SOLARIUM: 5.90 m²

PLANTA PISO 1
VIVIENDA TIPO BG3



SUPERFICIE ÚTIL

PLANTA PISO 1

DORMITORIO 1:	10,00 m ²
DORMITORIO 2:	8,80 m ²
BAÑO 1:	3,84 m ²
DISTRB. Y ESCALERA:	4,99 m ²
TOTAL:	27,63 m²
TERRAZA:	6,34 m ²

PLANTA BAJA
VIVIENDA TIPO BG3



SUPERFICIE ÚTIL

PLANTA BAJA

PORCHE 100%:	3,35 m ²
ESTAR-COMEDOR:	20,11 m ²
COCINA:	6,50 m ²
ASEO:	2,38 m ²
ZONA DE PASO:	1,71 m ²
ESCALERA:	3,99 m ²
TOTAL:	38,04 m²
PATIO:	3,50 m ²

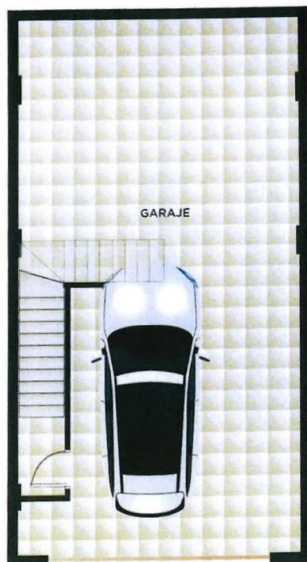
SUPERFICIE ÚTIL TOTAL VIVIENDA

PLANTA BAJA:	38,04 m ²
PLANTA PISO 1:	27,63 m ²
PLANTA PISO 2:	17,42 m ²
TOTAL:	83,09 m²

SUPERFICIE CONSTRUIDA TOTAL VIVIENDA

PLANTA BAJA:	41,71 m ²
PLANTA PISO 1:	31,70 m ²
PLANTA PISO 2:	22,12 m ²
TOTAL:	95,53 m²
CON PORCHE AL 50%:	

PLANTA SÓTANO
VIVIENDA TIPO BG3



SUPERFICIE ÚTIL

GARAJE:	48,71 m ²
---------	----------------------

SUPERFICIE CONSTRUIDA INCLUIDO P/P

GARAJE:	80,16 m ²
---------	----------------------