


Luxury TV Centre Apartments with Panoramic Views (007283)



1 200 000 €


 Floor area **38 m² - 190 m²**

Studio


 Number of rooms


- 1 bedroom**
- 2 bedrooms**
- 3 bedrooms**
- 3+1 penthouse**

 Furnitures **Partly**

 To the beach: **m**

 Location: **United Kingdom, London**

 To the airport: **km**

 To the city centre: **km**

Options

- ✓ View of the city
- ✓ Balcony/ Terrace
- ✓ Swimming pool
- ✓ Private territory
- ✓ Security
- ✓ Underground parking
- ✓ Elevator
- ✓ Playground

Description

Apartments in a unique development in the TV Centre area of London is a new 23-storey residential project with stunning views over West London.

Situated in the heart of the White City, the former BBC Television Centre is located on Wood Lane, next to Westfield West London.

The development offers a wide range of accommodation: **studios, 1, 2 and 3 bedroom apartments**, as well as exclusive penthouses. In total, the development offers 167 luxury apartments.

Residents have access to a full range of facilities including:

- 24-hour concierge
- Lobby
- Health studio and yoga/pilates studio
- Covered terrace, bar and lounge area
- Meeting rooms
- Cinema

The complex also provides access to **Soho House's 25,000 sq ft gym and swimming pool**.

The 3 bedroom apartments come with £ 75,000 parking spaces.

The TV Centre is a contemporary refurbishment of one of London's most famous landmarks. It combines history and modernity, while retaining original features designed to capture the light.

Perfectly located next to Hammersmith Park, home to a Japanese **garden, children's playground, tennis courts and football pitches**.

Westfield London, Europe's largest shopping and leisure centre, is on your doorstep, 300 metres away.

White City and Wood Lane stations are just 150 metres away, and Shepherds Bush is 1 km away, providing quick access to London's major transport links.

Apartment types:

- **Studios:** 38-44m²
- **1 bedroom apartments:** 52m²

- **2 bedroom apartments:** 65-109m²
- **3 bedroom apartments:** 97-122m²
- **Penthouses:** 122-190m²

Key features:

- **Expected completion:** Q3 2027
- **Prices from** £1,020,000
- **975 year leasehold (to 2999)**
- **Service charges:** approx £10.15 per sq m ft. per annum
- **Parking:** £75,000 (for 3 bedroom units)

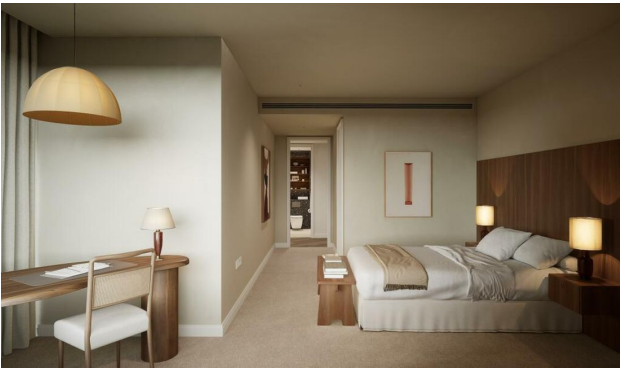
Payment plan:

- Registration fee: £5,000 up to £2m / £10,000 over £2m
- Down payment of 10% of the unit price for 28 days
- Final payment: 90% payable before completion

Information updated: 11.10.2024

Photo gallery





Scan the QR code to open the original page