


Mixed-use development in the heart of East London (017283)




814 600 €

 Floor area **40 m² - 155 m²**

 Number of rooms

Studio
1 bedroom
2 bedrooms
3 bedrooms

 Furnitures **Partly**

 To the beach: **m**

 Location: **United Kingdom, London**

 To the airport: **km**

 To the city
centre: **km**

Options

- ✓ Balcony/ Terrace
- ✓ Private territory
- ✓ Security
- ✓ Elevator

Description

An impressive 37-storey residential tower located **in East London**, close to famous landmarks and outstanding areas of the city. The complex has everything for comfortable living, residential, commercial and office premises, as well as a variety of entertainment.

One of the main advantages of the complex is its location.

Residents have the opportunity to enjoy both local cuisine and international dishes right on the territory of the hotel and around it.

Apartment types:

- **Studio** area 40.2 - 46.8 m²
- **1 bedroom** area 50.7 - 107 m²
- **2 bedrooms** area 125.7 - 132.4 m²
- **3 bedrooms** area 134.5 - 155.4 m²

Price from 699,000 £.

Transport links are another plus:

- Liverpool Street Underground Station and the rail network provide quick access to all corners of London and beyond.
- Crossrail will take you to Heathrow in just 40 minutes, and the West End can be reached in under 10 minutes.

Amenities on site:

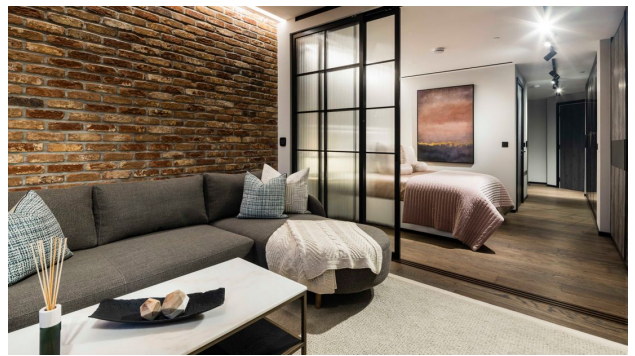
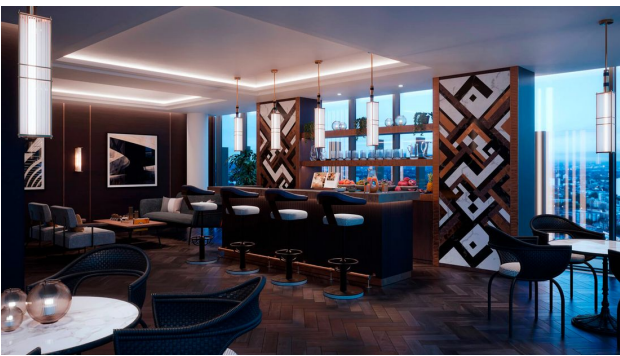
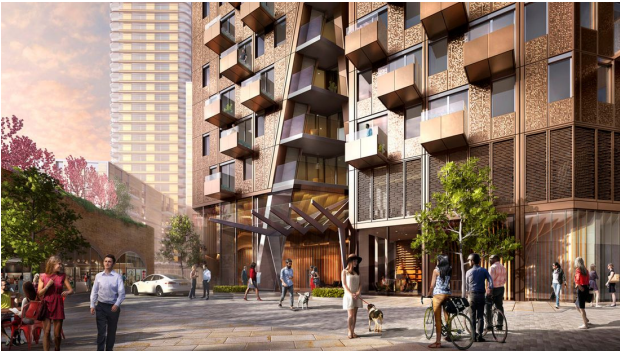
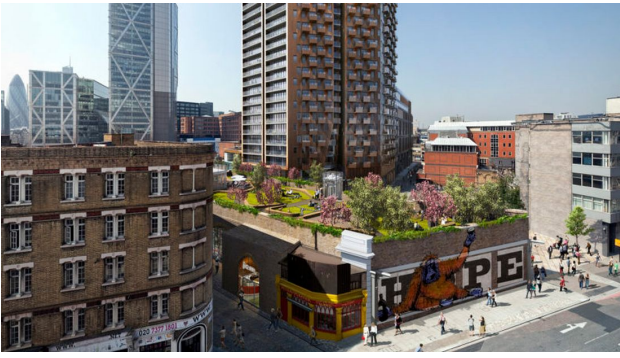
- Bowling and games room for entertainment
- Fitness room for keeping fit
- Business lounge for business meetings and work
- Cinemas for movie nights
- Sky Lounge and Sky Terrace on the 32nd floor with panoramic views of London
- A central public square, one of the oldest in London
- Workspace from the world-famous brand WeWork
- Secure CCTV system

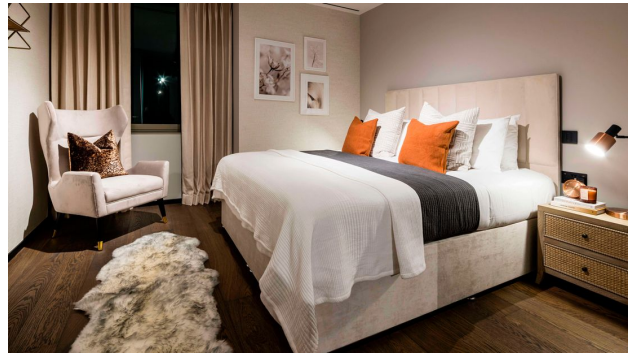
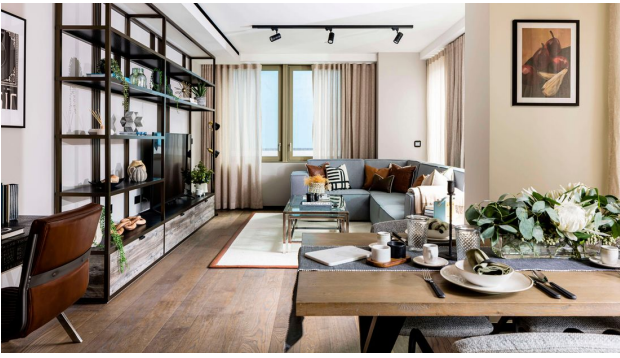
The development comprises 412 apartments, commercial and leisure space with a total area of 50,000 m².

Information updated: 14.10.2024

Photo gallery









Scan the QR code to open the original page