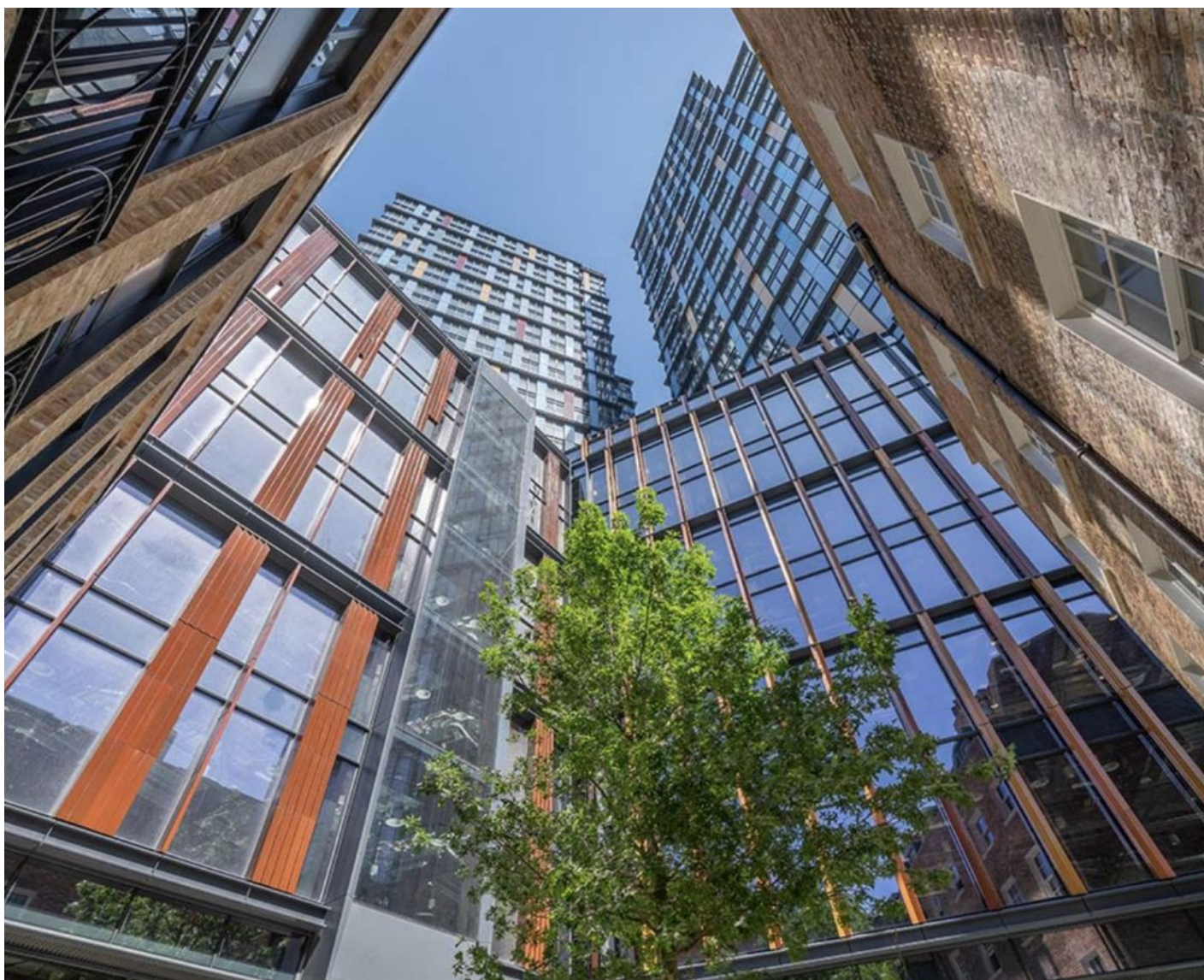


A luxury residential development in the heart of London, combining history and modernity (018283)



1 163 000 €

 Floor area 57 m² - 120 m²

 Number of rooms	1 bedroom 3 bedrooms
 Furnitures	Partly
 To the beach:	m
 Location:	United Kingdom, London
 To the airport:	km
 To the city centre:	km

Options

- ✓ Panoramic view
- ✓ Balcony/ Terrace
- ✓ Private territory
- ✓ Elevator

Description

A unique mixed-use development, strategically located on the border of the **City and Shoreditch**, combining historic architecture with contemporary residential towers.

The development comprises **246 apartments**, spread across two new towers, as well as a historic building, which offers charm and character.

The six-storey podium houses 10,650 sq m of high-quality office space and various retail spaces on the ground floor, as well as work and leisure spaces.

The development also includes a boutique hotel.

With its prime location close to London's key attractions, residents have access to all facilities.

The surrounding area is home to prestigious institutions, hospitals, shopping centres, restaurants and cafes, creating a relaxed atmosphere.

The famous **Liverpool Street is 3 minutes away**, as well as Liverpool Street and Moorgate tube stations. Get to London Bridge in 7 minutes, and Victoria in just 14 minutes.

On the territory of the project, residents will be able to use a chic terrace with stunning gardens. In addition, residents are offered a gym, a conference room, and a lobby with a 24-hour concierge.

Apartment types:

- **One-bedroom apartments** - 57m²
- **Two-bedroom apartments** - 120m²

Apartments start from £998,000.

Amenities:

- 24-hour concierge
- Gym
- Health and beauty treatment room
- Art Deco screening room
- Residents' lounge
- Roof terrace
- Workhub for work and meetings
- Private dining room

The development offers comfort and a high standard of living thanks to thoughtful architecture, infrastructure and modern amenities. Residents can enjoy both the life of Shoreditch and the business atmosphere of the City.

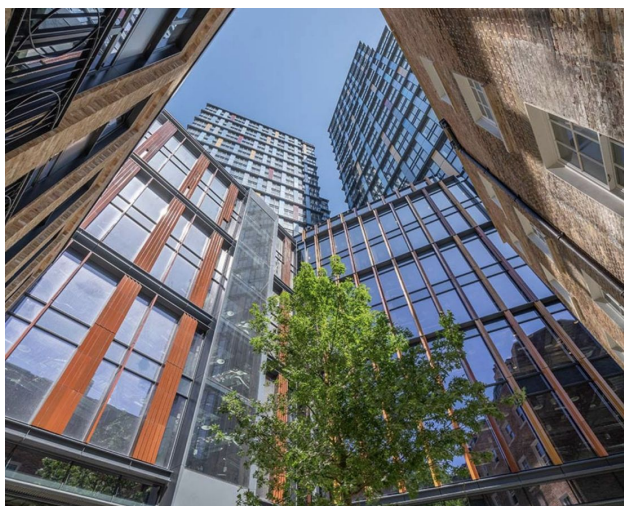
Information:

- **Tenure:** 999 years lease from January 2020
- **Service charge:** £11.13 per sq. ft
- **Ground Rent:** N/A
- **Completion Date:** Q2 2021

The development is ideal for those seeking comfort, style and a convenient location in the vibrant heart of London.

Information updated: 15.10.2024 r.

Photo gallery







Scan the QR code to open the original page