

Apartments in the heart of London, in the popular Borough area (019283)




705 200 € - 1 450 000 €

🏠 Floor area **38 m² - 98 m²**


🏠 Number of rooms **Studio**
1 bedroom
2 bedrooms
3 bedrooms

🪑 Furnitures **Partly**

 To the beach: **m**

 Location: **United Kingdom, London**

 To the airport: **km**

 To the city centre: **km**

Options

- ✓ Balcony/ Terrace
- ✓ Private territory
- ✓ Garden view
- ✓ Elevator

Description

A new residential complex located in the heart of Borough, SE1, where history and modernity combine.

The complex is built within the walls of the former London Fire Brigade building, which is a Grade II listed building. This project offers a unique combination of historical architecture and cutting-edge modern solutions, creating an atmosphere where the past and the future intertwine.

The residences are surrounded by a central courtyard, which corresponds to a traditional view of city life.

The complex offers both new builds and carefully restored historic buildings.

In total, the complex has **199 apartments**, from **stylish studios to spacious three-bedroom duplexes**.

The complex offers an exquisite set of amenities, perfectly integrated into the environment for maximum relaxation and enjoyment of city living. These include **state-of-the-art fitness**

facilities, lounge areas, a cinema screening area, and a private garden where you can enjoy the tranquility and nature without leaving London.

Conveniently located, the development is just a **five-minute walk from Borough Tube Station** and **13 minutes from London Bridge**, providing quick access to all corners of London.

The CS7 cycle route is also nearby, with secure bike storage on site, making it convenient for those who prefer to get around on two wheels.

The ferry service allows residents to enjoy scenic rides along the River Thames.

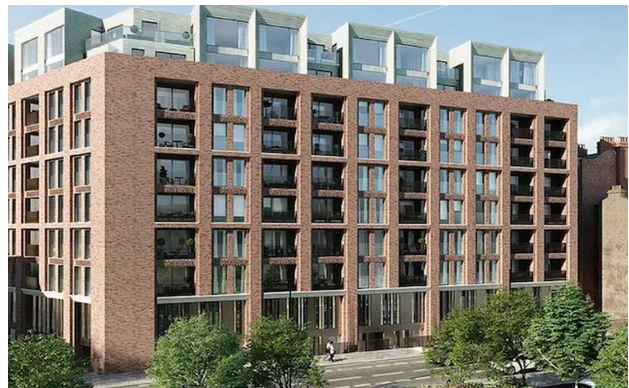
Types of apartments:

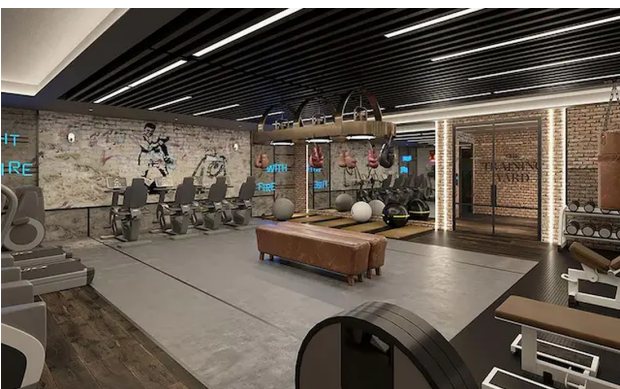
- **Studios** — 38 m², from **£ 605,000**
- **One-bedroom apartments** — 64 m², from **£ 735,000**
- **Two-bedroom apartments** — 73 m², from **£ 960,000**
- **Three-bedroom duplexes** — 98 m², from **£ 1,245,000**

The complex is ready for occupancy and offers all the conditions for comfortable and modern living in one of the most dynamic areas of London.

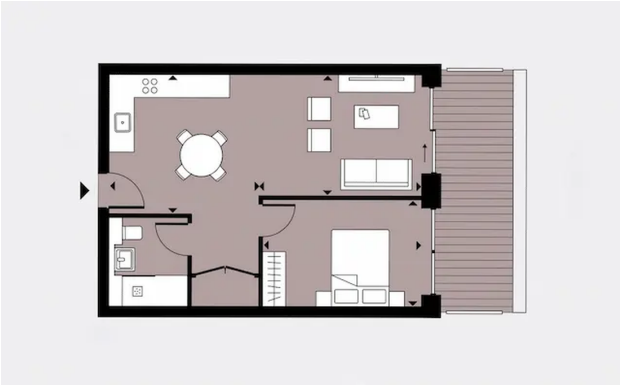
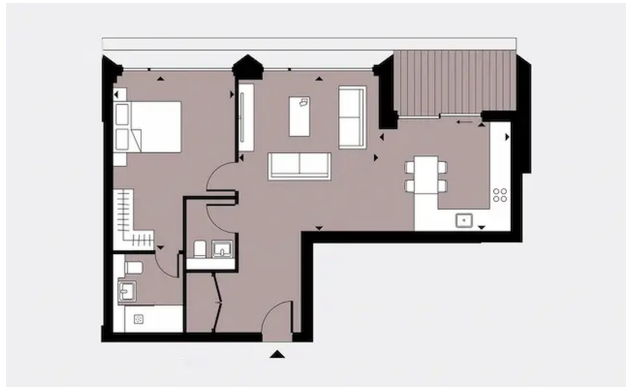
Information updated: 15.10.2024

Photo gallery









Scan the QR code to open the original page