

Luxury development in Marylebone, Westminster (020283)



1 766 000 €


🏠 Floor area **54 m² - 149 m²**

🏠 Number of
rooms **1 bedroom**


2 bedrooms


3 bedrooms

 Furnitures **Partly**

 To the beach: **m**

 Location: **United Kingdom, London**

 To the airport: **km**

 To the city centre: **km**

Options

- ✓ Balcony/ Terrace
- ✓ Private territory
- ✓ Security
- ✓ Elevator

Description

A new development in the prestigious **Marylebone area of Westminster offers exquisite 1, 2 and 3 bedroom apartments**, complemented by spacious terraces.

Marylebone is one of London's most affluent and desirable boroughs, renowned for its excellent educational institutions, shopping and abundance of cultural attractions.

Apartment types:

- **1 bedroom:** 54.2-59.1 m² + 9.3 m² terrace
- **2 bedrooms:** 80.6-89 m² + 9.4 m² terrace
- **3 bedrooms:** 148.6 m² + 26.6 m² terrace

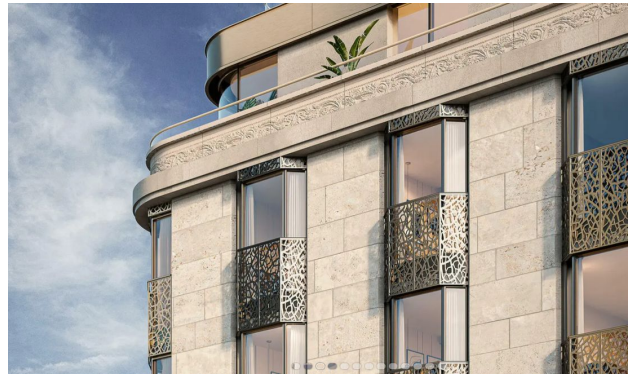
Area advantages:

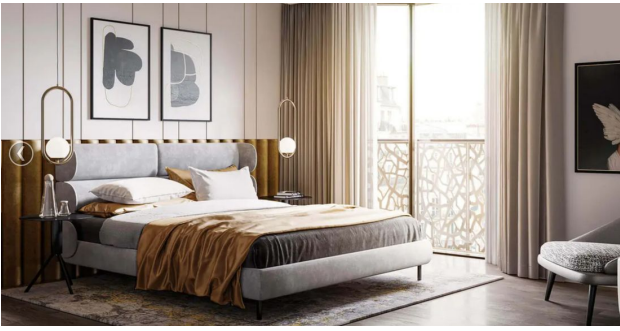
- **Educational institutions:** Marylebone offers access to the city's best educational institutions, including the University of London and the University of Westminster, as well as a variety of prestigious schools for children of all ages. There are also thriving schools and special interest clubs, making the area useful for families.
- **Shops and restaurants:** Regent Street and Carnaby Street are located nearby, where you can find luxury brands and fashion boutiques. In addition, there are grocery stores and fashionable restaurants on New Bond Street. For a more casual dining experience, there are local cafes and eateries such as Peyton and Byrne Bakeries and Java Whiskers Cat Café.
- **Cultural Attractions:** Residents can enjoy proximity to famous museums such as Madame Tussauds, Sherlock Holmes Museum and the British Museum. Art lovers can enjoy regional conferences and cultural events. The area is also home to the famous Regent's Park, Neverland Cinema and Dominion Theatre.
- **Healthcare:** The area is home to hospitals and private clinics, including the Father Edward VII and Princess Grace Hospitals, providing high-quality healthcare.
- **Transport Access:** With Great Portland Street Underground Station and the various Regent's Park and Warren Street stations, residents can easily get around the city. London Euston, King's Cross and St Pancras International train stations provide easy access to national and international destinations.

This development perfectly combines convenient living in the heart of London with access to the best educational, cultural and commercial locations. Residents will have the opportunity to enjoy all the benefits of living in one of the capital's most prestigious areas, without missing out on the opportunity to discover something new every day.

Information updated: 15.10.2024

Photo gallery





Scan the QR code to open the original page