

Luxury Residences in the Heart of Kensington by Celebrity Architect (001525)




7 575 700 €

🏠 Floor area **233 m² - 390 m²**


🏠 Number of rooms **3 bedrooms**
rooms **4 bedrooms**

🪑 Furnitures **Full**

 To the beach: **m**

 Location: **United Kingdom, London**

 To the airport: **km**

 To the city centre: **km**

Options

- ✓ Balcony/ Terrace
- ✓ Private territory

Description

A new, sophisticated development of just 13 exclusive apartments designed by renowned London architect Eric Perry.

This prestigious development, located in the heart **of Kensington**, offers the perfect combination of understated luxury and exceptional comfort.

Surrounded by the striking mansions of Kensington Palace Gardens and close to the fashionable shops of Notting Hill, this address is rightly considered one of the most desirable in London.

Apartment types:

- **3-bedroom duplex** (233-234 sq.m.)
- **4-bedroom** apartment of 390 sq.m.

Amenities include **24-hour concierge service, underground parking with valet service, private garage and landscaped courtyard for residents.**

Special attention has been paid to the interior details - carefully selected **kitchens from the famous British company Smallbone of Devizes**, made to order especially for this project, using exquisite Macassar materials.

Each kitchen is equipped with high-end appliances from Wolf, Gaggenau and Sub-Zero, meeting the highest requirements.

Living in the house, you will be within walking distance of Kensington Palace and its famous gardens, as well as the best museums, galleries and theaters of London.

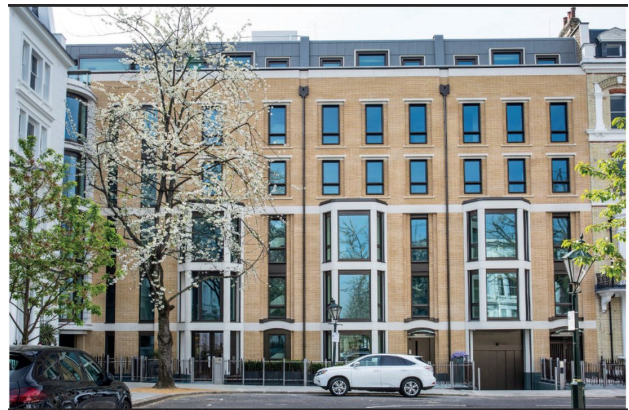
This area with its quiet streets lined with trees and unique architecture has always been a place of attraction for the most demanding residents.

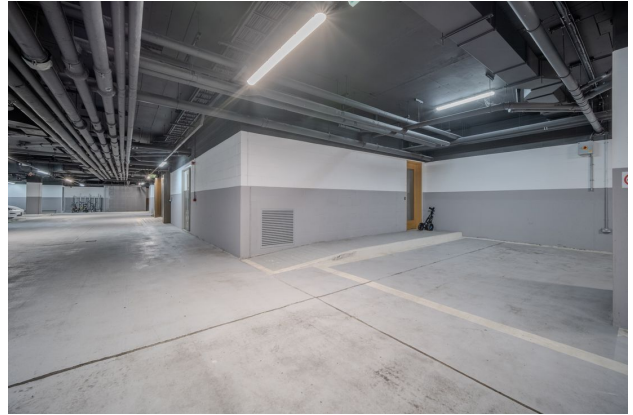
Price: from 6,500,000 £.

The complex offers 999 years of leasehold with shares of the right of ownership.

Information updated: 16.10.2024

Photo gallery













Scan the QR code to open the original page