

Luxury 2-bedroom apartment in a prestigious complex in the heart of Westminster (003525)



1 573 500 €

🏠 Floor area **80 m²**

🏠 Number of
rooms **2 bedrooms**

 Furnitures	Partly
 To the beach:	m
 Location:	United Kingdom, London
 To the airport:	km
 To the city centre:	km

Options

- ✓ Swimming pool
- ✓ Garden
- ✓ Elevator

Description

This bright 2-bedroom apartment of 79.8 sq. m. offers an exceptional combination of style, comfort and luxury in a prestigious complex located in the **heart of Westminster**.

The apartment includes **two spacious bedrooms** and **one modern bathroom**, ideal for comfortable living.

The large and bright apartment with panoramic windows creates a feeling of space and peace.

The complex offers its guests the highest level of services and facilities.

You will have **a fully equipped gym, a leisure pool, a 24-hour concierge, and the most beautiful communal gardens for walking and relaxing.**

The complex is located just half a mile from world-class shopping centers such as Mayfair, Belgravia and Knightsbridge, where you will find not only the best shops, but also a variety of restaurants, museums, galleries and theaters.

The nearest tube stations are Westminster, St James's Park, Pimlico and Victoria.

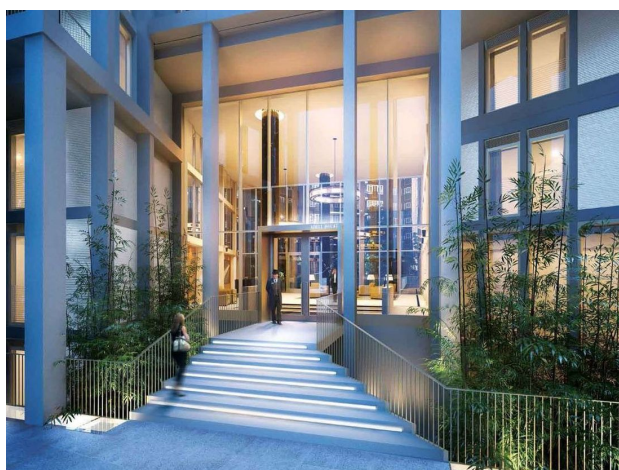
A large number of world-class schools, colleges and universities are located in close proximity to the development, including the prestigious Westminster School and the University of the Arts London.

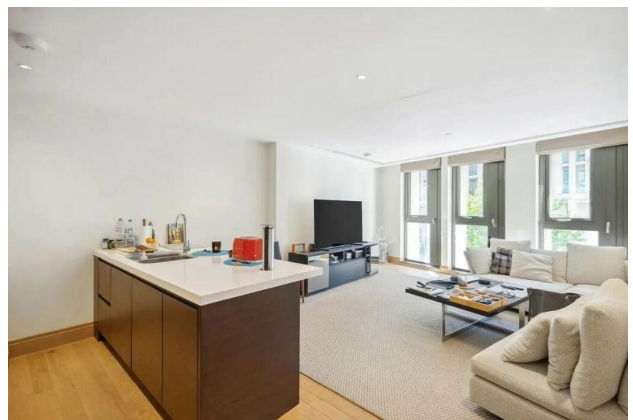
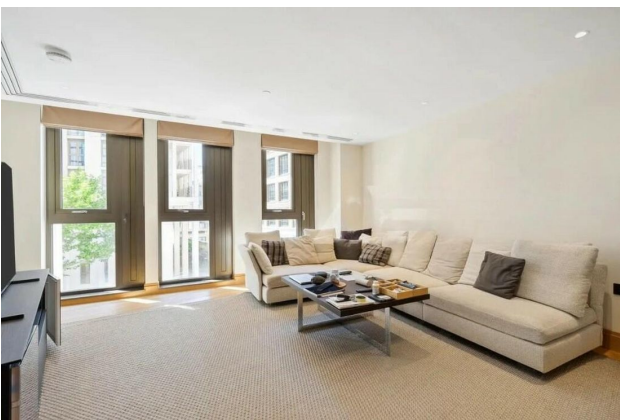
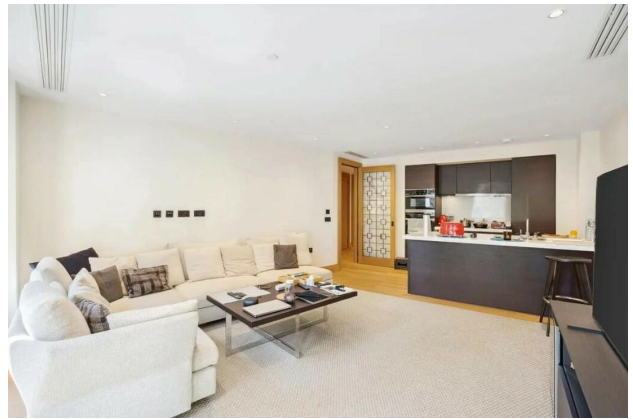
Westminster is renowned for its culinary excellence, with 36 Michelin-starred establishments in its midst.

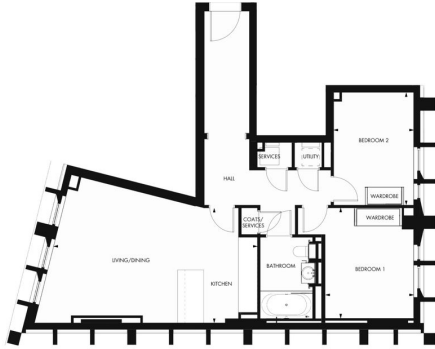
Price: £1,350,000 - ideal for those seeking a combination of central location and premium living.

Information last updated: 17.10.2024

Photo gallery







Scan the QR code to open the original page