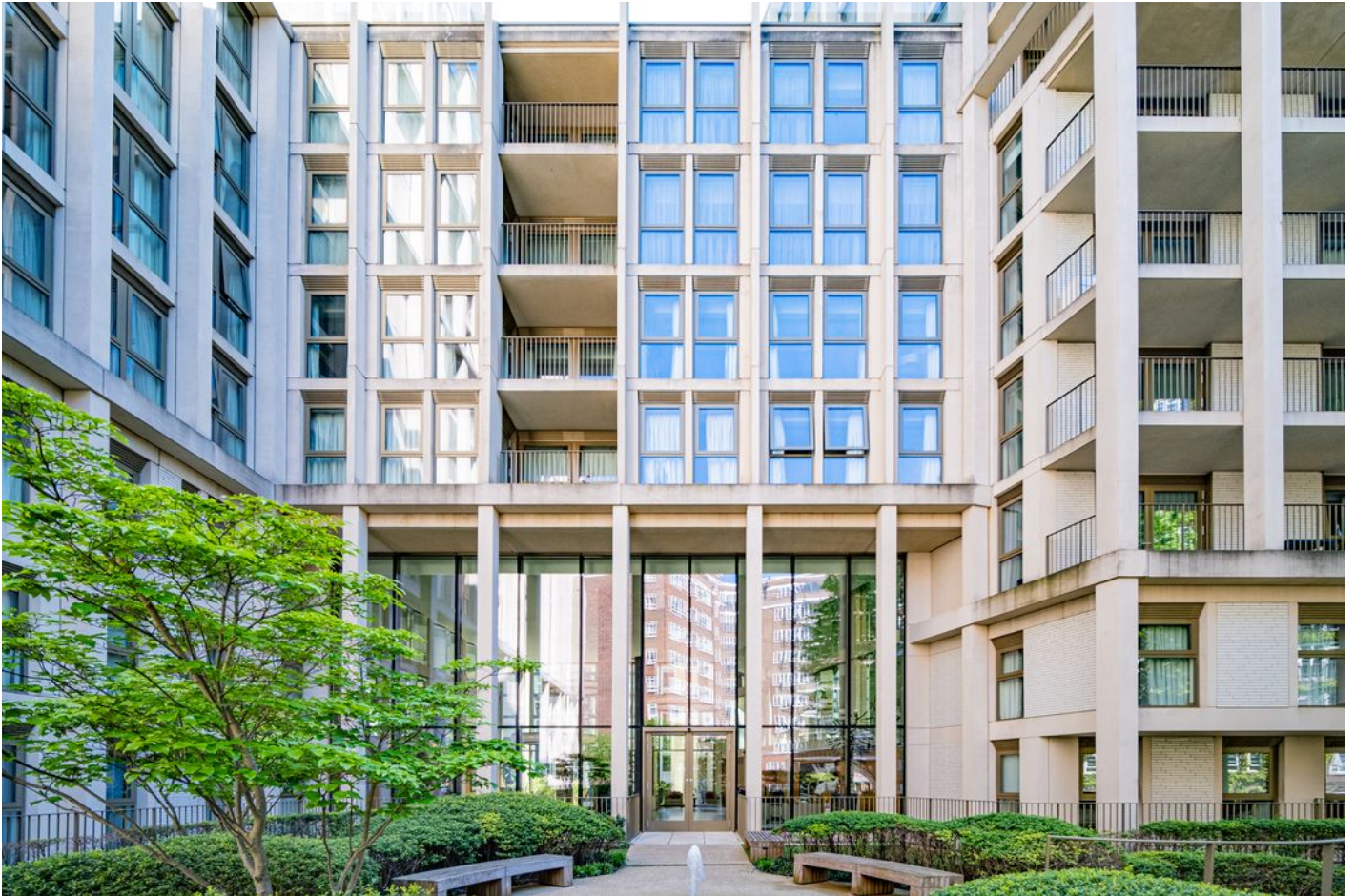



Spacious apartment in a luxury complex, Westminster (004525)




2 200 000 €

 Floor area **111 m²**

 Number of rooms **2 bedrooms**

 Furnitures **Partly**

 To the beach: **m**

 Location: **United Kingdom, London**

 To the airport: **km**

 To the city
centre: **km**

Options

- ✓ View of the city
- ✓ Balcony/ Terrace
- ✓ Swimming pool
- ✓ Private territory
- ✓ Security
- ✓ Elevator

Description

A luxurious 110.6 sq. m. 2-bedroom apartment is located in a prestigious residential complex located in the heart of Westminster.

The complex offers a contemporary lifestyle with high-quality finishes, spacious apartments and access to first-class facilities such **as a gym and swimming pool**.

Residents will enjoy the unique location of the complex: just a few minutes' walk from London attractions including the Houses of Parliament, St James's Park and the world-famous Tate Britain gallery.

There are restaurants, cafes, nurseries and government offices in the immediate vicinity, including MI5 and Transport for London.

The complex offers unrivalled access to the city's cultural life: Westminster Abbey is just half a mile away, Big Ben is 1 km away and Buckingham Palace is just 1.5 km away.

For ease of travel, Westminster Underground Station is 1 km away and serves the Circle, Jubilee and District lines, providing quick access to the West End, the City and Canary Wharf.

Also 500 metres away is Millbank Pier, where you can take a river bus.

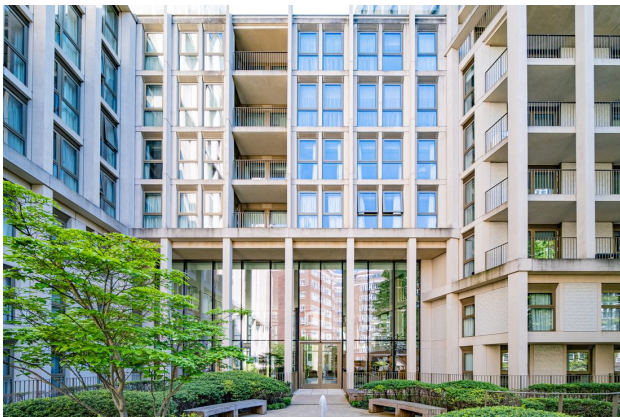
The complex provides convenient connections to important transport hubs and business centres of London:

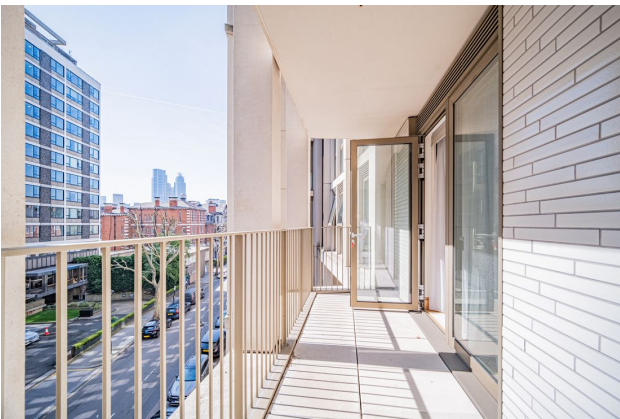
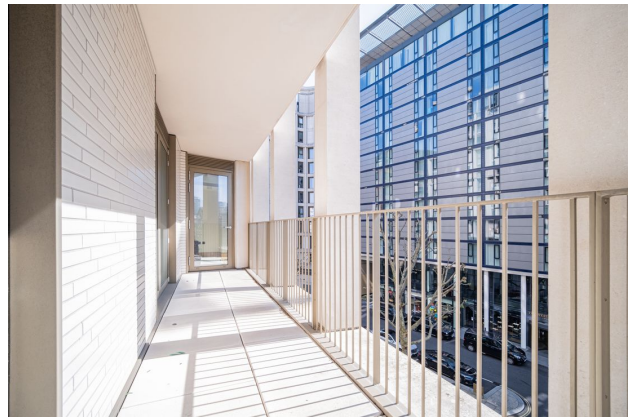
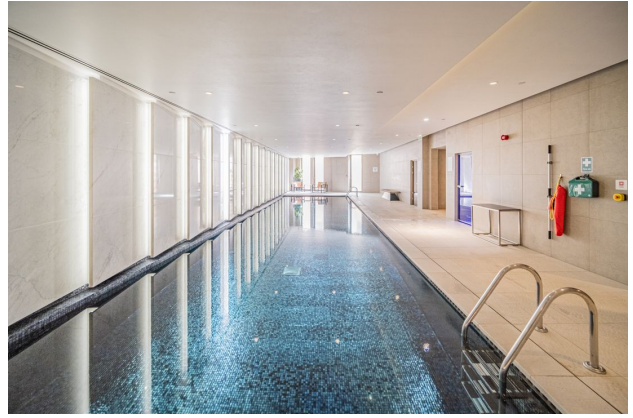
- Heathrow Airport - 28 km (~53 minutes by car);
- London City Airport - 16 km (~25 minutes by car);
- The City - 5 km;
- Canary Wharf business district - 8 km.

Price: £ 1,850,000 - this is an ideal offer for those who value style, comfort and proximity to all the main attractions of London.

Information updated: 17.10.2024

Photo gallery











Approximate Gross Internal Area = 1190 sq ft / 110.6 sq m



This plan is for layout guidance only. Not drawn to scale unless stated. Windows and door openings are approximate. Whilst every care is taken in the preparation of this plan, please check all dimensions, shapes and compass bearings before making any decisions reliant upon them. (D2475459)