





# Magnificent villa in prestigious residential complex in Finestrat (256237)



**565 000 €**

-  Floor area **167 m<sup>2</sup>**
-  Number of rooms **3 bedrooms**
-  Furnitures **Partly**
-  To the beach: **m**

 Location: **Spain, Аликанте**

 To the airport: **km**

 To the city  
centre: **km**

## Options

- ✓ Balcony/ Terrace
- ✓ Swimming pool
- ✓ Private territory

## Description

Magnificent villa in the prestigious residential complex **Sierra Cortina, Finestrat**, designed to make the beauty of the Mediterranean and the Sierra Cortina mountains felt in every corner.

The house with its exquisite design offers a perfect connection between the interior and exterior spaces, creating a continuous flow of light and space.

### Villa Features:

- **3 bedrooms and 3 bathrooms**
- Living room with spacious seating areas
- American kitchen, equipped with everything you need
- Terraces with a total area of 46 m<sup>2</sup>, including open and covered areas
- Private pool to relax and enjoy the sunny climate
- Usable area: 119 m<sup>2</sup>, built area: 167 m<sup>2</sup>
- Plot: 300 m<sup>2</sup>
- Parking and pre-installation of air conditioning

### First floor:

**On the second floor** there are two en-suite bedrooms with access to a spacious terrace, ideal for relaxing in the fresh air with views of the surrounding landscape.

## Additional Features:

The house is equipped with a basement and an internal English courtyard, which provides additional spaces to customize the home to your preferences. Various additional options are also available to adapt the house to your lifestyle.

Built using high-quality materials and with an emphasis on harmony and coziness, the villa was completed **in May 2024**, offering the perfect combination of luxury, comfort and tranquility.

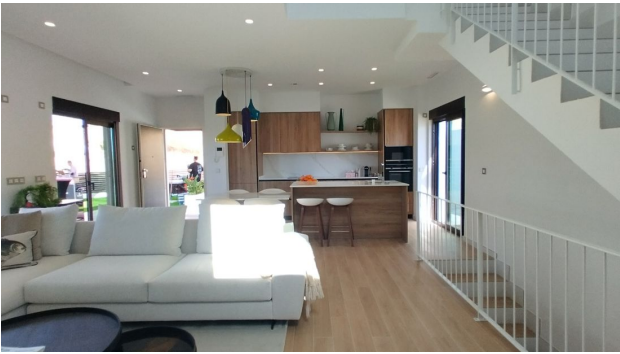
This villa is your chance to enjoy a luxurious life surrounded by nature and magnificent views.

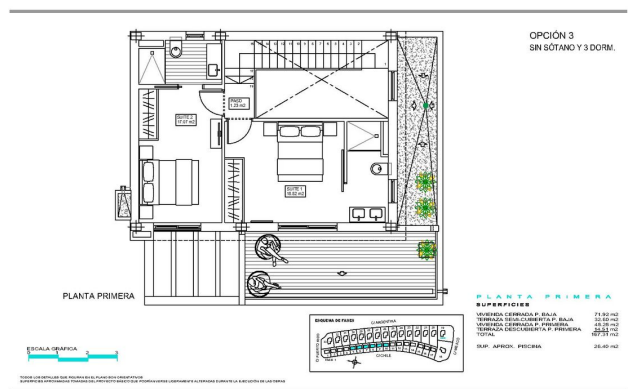
**Information updated: 18.10.2024**

## Photo gallery











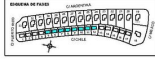
OPCIÓN 3  
SIN SÓTANO Y 3 DORM.

PLANTA BAJA

SUPERFICIES

SUPERFICIE DE COBERTURA	77,92 m <sup>2</sup>
SUPERFICIE DE COBERTURA P. BAJA	11,92 m <sup>2</sup>
SUPERFICIE DE COBERTURA P. PRIMERA	82,20 m <sup>2</sup>
SUPERFICIE DE COBERTURA P. SEGUNDA	82,20 m <sup>2</sup>
TOTAL	257,24 m <sup>2</sup>
SUP. APROX. PISCINA	26,40 m <sup>2</sup>

ESCALA GRÁFICA



PLANTA BAJA, OPCIÓN SIN SÓTANO



Scan the QR code to open the original page