

# Contemporary Villa with Stunning Sea Views in Finestrat (257237)




**1 050 000 €**

**🏠 Floor area      315 m<sup>2</sup>**


**🏠 Number of  
rooms            4 bedrooms**

**🪑 Furnitures      Partly**

 To the beach: **m**

 Location: **Spain, Аликанте**

 To the airport: **km**

 To the city centre: **km**

## Options

- ✓ Balcony/ Terrace
- ✓ Swimming pool
- ✓ Private territory

## Description

**This luxury villa in Finestrat** is the perfect balance between nature, contemporary design and Mediterranean aesthetics.

Surrounded by greenery, the villa blends harmoniously with its surroundings, creating an atmosphere of peace and privacy. With magnificent views of the Sierra Cortina and the sea, it offers a unique combination of traditional elements and contemporary architecture.

### Villa Features:

- **4 bedrooms and 4 bathrooms**
- **Land area:** 620 m<sup>2</sup>
- **Usable area:** 144 m<sup>2</sup>, built-up area: 315 m<sup>2</sup>
- American kitchen, perfectly integrated into the living space
- Terrace with a total area of 47 m<sup>2</sup>, including open and covered areas for relaxation
- Private pool and fenced area for complete privacy
- Parking and modern air conditioning system through through ducts

### Unique design:

- **Floor 0**, covered with natural limestone, serves as a solid foundation for the entire structure.
- **The first floor** with a monolayer and shutters provides privacy and protects the personal space of the house.
- **The second floor**, where the master bedroom is located, opens onto a spacious terrace, decorated in warm colors, which adds coziness and elegance to the house.

A garden decorated with cacti and white gravel connects the different levels, while natural grass and thoughtful landscaping enhance the villa's connection with nature.

This villa is a unique offer for those who appreciate the beauty of nature, modern comfort and exquisite architecture.

Built using only the best materials, it will be completed in 2025.

**Information updated: 18.10.2024**

## Photo gallery









FLOOR 0

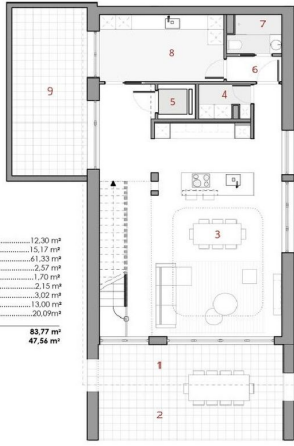


TABLE OF USEFUL SURFACES

1 Covered porch.....	12.30 m <sup>2</sup>
2 Open porch.....	15.17 m <sup>2</sup>
3 Dining/living room.....	61.33 m <sup>2</sup>
4 Partry.....	2.57 m <sup>2</sup>
5 Elevator shaft.....	1.70 m <sup>2</sup>
6 Hall.....	2.15 m <sup>2</sup>
7 Bathroom.....	3.02 m <sup>2</sup>
8 Laundry room / Homeoffice.....	13.00 m <sup>2</sup>
9 Interior patio.....	20.09 m <sup>2</sup>

Ground floor USABLE AREA 83.77 m<sup>2</sup>  
 Ground floor TERRACE SURFACE 47.56 m<sup>2</sup>

GROUND FLOOR NOISE BUILT SURFACE 97.40 m<sup>2</sup>  
 (TERRACE ARE NOT INCLUDED)