

Apartments in a residential complex by the sea in Mersin (002372)



120 000 € - 184 000 €


 Floor area **86 m² - 135 m²**


 Number of rooms **1 bedroom**
2 bedrooms

 Furnitures **Partly**

 To the beach: **400 m**

 Location: **Turkey, Mersin**

 To the airport: **km**

 To the city centre: **km**

Options

- ✓ Sea view
- ✓ Balcony/ Terrace
- ✓ Swimming pool
- ✓ Private territory
- ✓ Outdoor parking
- ✓ Security
- ✓ Elevator
- ✓ Playground
- ✓ Generator

Description

The complex is an oasis of comfort and elegance in the developing area **of Erdemli/Arpaçbahşı, Mersin.**

This modern residential complex promises a high quality of life in one of the most promising corners of the region, combining style, convenience and well-thought-out infrastructure.

Project features:

The complex consists of one **15-storey building.**

The project includes 90 apartments, of which **60 apartments are 1+1** (two types) and **30 apartments are 2+1.**

Every detail of the complex is made with impeccable quality and a guarantee from the developer, which ensures reliability and comfort for many years.

Particular attention is paid to safety - the complex is being built using bored piles and fully complies with modern seismic resistance standards.

Types of apartments:

2+1 apartments:

- Gross: 135 m²
- Net: 105 m²

1+1 apartments (large):

- Gross: 95 m²
- Net: 75 m²

1+1 apartments (small):

- Gross: 86 m²
- Net: 65 m²

All apartments are delivered with final finishing, including:

- **Kitchen** set and built-in wardrobes in the hallway.
- Fully equipped bathrooms.
- Prepared outlets for appliances and gas equipment.

- Special rooms for installing air conditioners on the common area.

Privileges for residents:

Residents of the complex will be able to enjoy a full infrastructure, including:

- **An outdoor swimming pool** where you can relax on hot summer days.
- **A modern gym** to maintain an active lifestyle.
- **Children's playground** and barbecue area for family and friendly gatherings.
- **Generator and 2 elevators** provide comfort and safety of living.

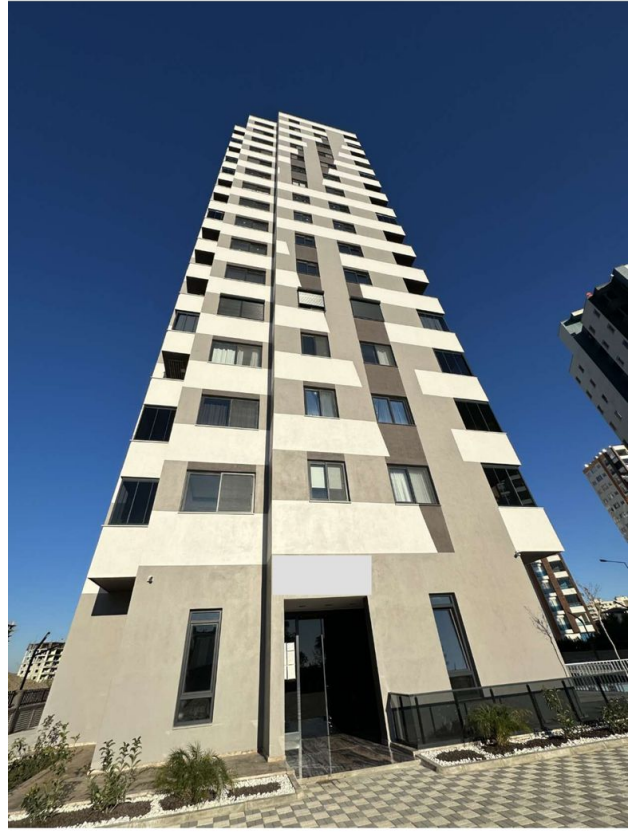
Convenient location:

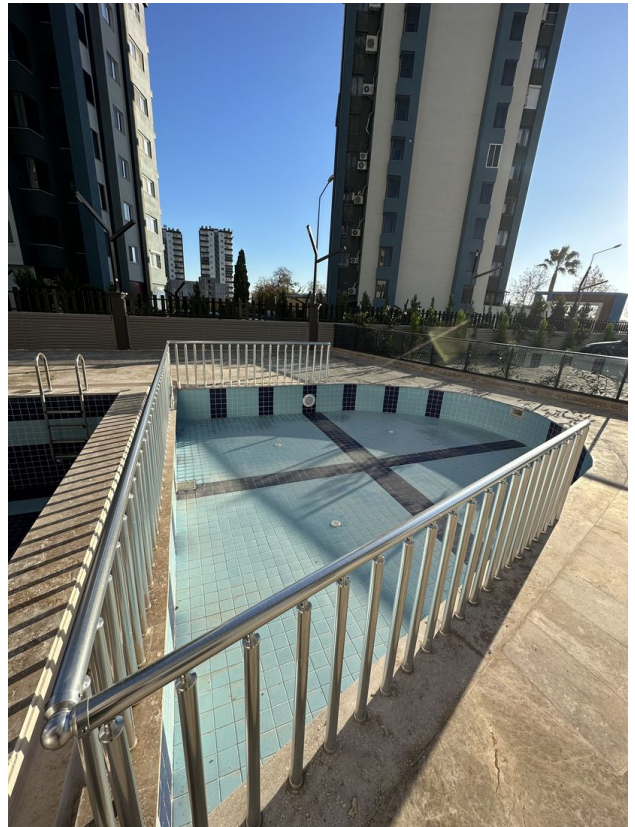
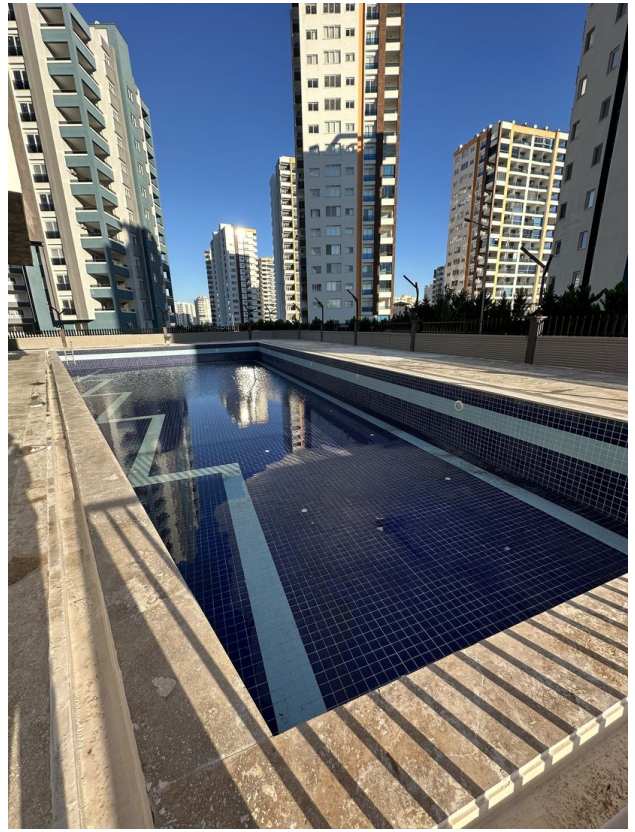
- **The complex is located only 400 m from the sea**, which allows you to enjoy the sea breeze and beach holidays.
- The **total area** of the residential complex is 3000 m², which allows you to maintain space and comfort for each resident.

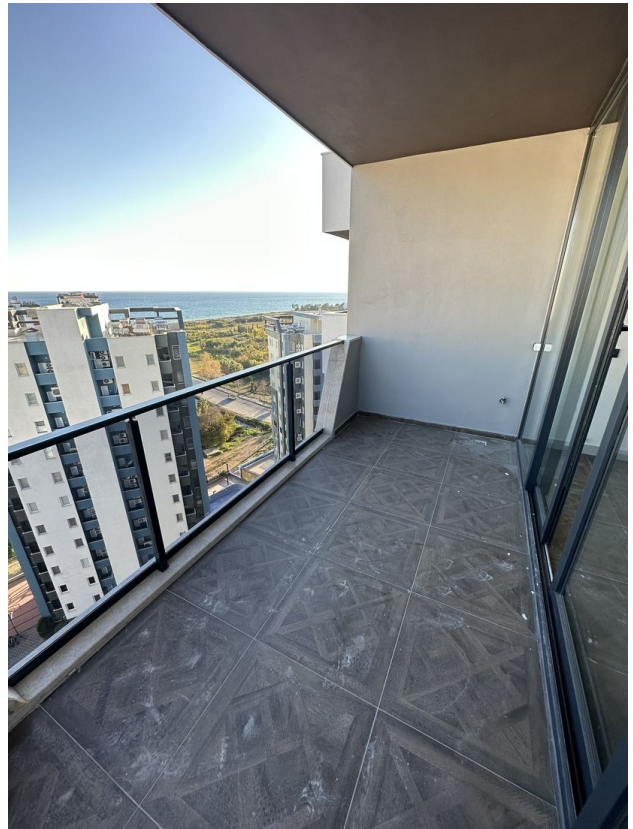
The complex is an ideal combination of the convenience of city life and the tranquility of a seaside resort, where comfort and safety become part of everyday life.

Information updated: 19.11.2024

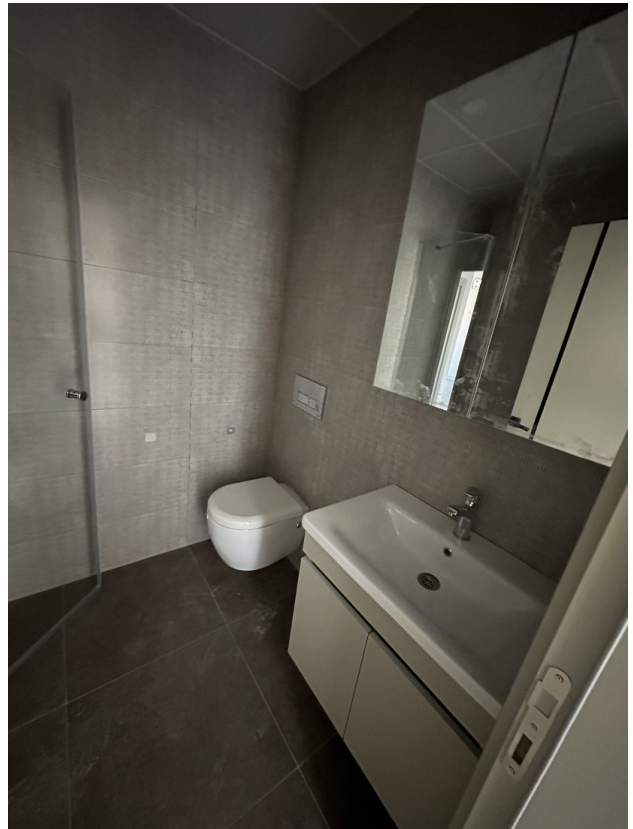
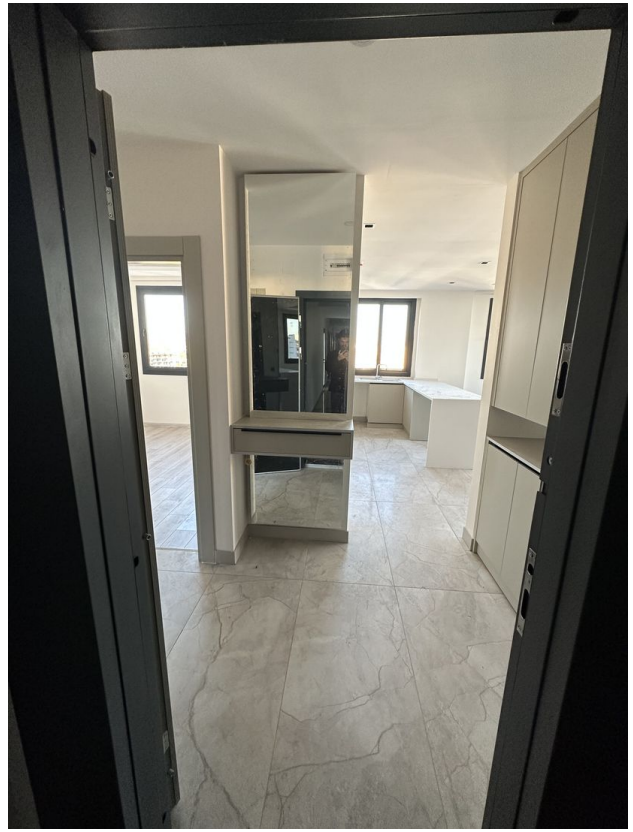
Photo gallery

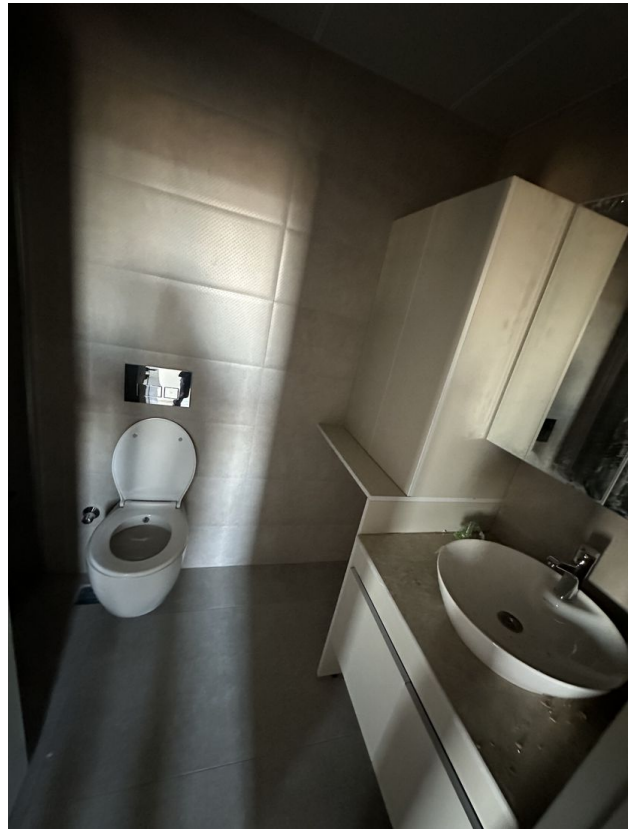












Scan the QR code to open the original page