







# Modern apartments with green areas and pool on the Costa Calida, Los Narejos (270237)



**265 000 €**

-  Floor area **141 m<sup>2</sup>**
-  Number of rooms **3 bedrooms**
-  Furnitures **Partly**
-  To the beach: **m**
-  Location: **Spain, Аликанте**
-  To the airport: **km**

 To the city  
centre:                      km

## Options

- ✓ Balcony/ Terrace
- ✓ Swimming pool
- ✓ Private territory
- ✓ Garage
- ✓ Elevator
- ✓ Playground

## Description

Modern apartment in a new residential complex, located in the quiet, ideal area **of Los Narejos on the Costa Calida**, for those who appreciate nature, proximity to the sea and the conveniences of city life.

The complex consists of 87 apartments, distributed in three buildings, with landscaped green areas, swimming pools and playgrounds.

### Features:

- **Apartment area:** 95 m<sup>2</sup> usable and 141 m<sup>2</sup> total
- **Bedrooms:** 2 or 3 to choose from
- **Bathrooms:** 2
- **Terrace:** 23 m<sup>2</sup>
- **Floor:** 3rd (total 4 floors in the building)
- **Kitchen:** American type, open plan with living room
- **Air conditioning:** pre-installation provided
- **Parking:** underground garage included in the price
- **Swimming pool:** communal swimming pool on the territory of the complex
- **Lift:** with access to the parking

## Features of the complex:

- South-west facing, provides excellent lighting
- Proximity to the beaches of the Mar Menor, golf courses and leisure areas
- Penthouses with private solariums, ground floor apartments - with terraces and gardens
- Shopping centers and various services for a comfortable stay are located nearby

**Completion date: December 2023**

**Information updated: 01.11.2024**

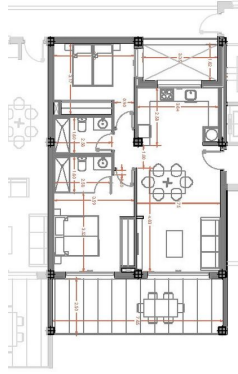
## Photo gallery





**HOUSE N.26 (TYPE B1) 3RD FLOOR - BLOCK 1**

THE SHOWN AREA IS APPROXIMATE. CONSULT ARCHITECT FOR MORE DETAILS REGARDING THE FINAL PROJECT.



3RD FLOOR	TYPE B	BUILT SURFACE	95,00 M <sup>2</sup>
		LIVING ROOM KITCHEN	30,80 M <sup>2</sup>
		BEDROOM 1	13,50 M <sup>2</sup>
		BEDROOM 2	15,40 M <sup>2</sup>
		BATHROOM 1	6,30 M <sup>2</sup>
		BATHROOM 2	6,30 M <sup>2</sup>
		CORRIDOR	3,65 M <sup>2</sup>
		COVERED TERRACE 50%	9,50 M <sup>2</sup>
		TOTAL USABLE SURFACE	76,95 M <sup>2</sup>

