








# Modern apartment with terrace and views of the green area in La Roda, San Javier (271237)



**235 000 €**

-  Floor area **94 m<sup>2</sup>**
-  Number of rooms **2 bedrooms**
-  Furnitures **Partly**
-  To the beach: **m**
-  Location: **Spain, Аликанте**
-  To the airport: **km**
-  To the city centre: **km**

## Options

- ✓ Balcony/ Terrace
- ✓ Swimming pool
- ✓ Private territory
- ✓ Elevator
- ✓ Playground

## Description

Apartment in a new residential complex located in the beautiful and quiet area **of La Roda, San Javier, on the Costa Calida.**

The complex includes 87 modern and spacious apartments, located in three buildings.

Spacious green areas with swimming pools, playgrounds and recreation areas are created for a comfortable and relaxing stay.

### Apartment characteristics:

- **Area:** useful area 70 m<sup>2</sup>, total 93 m<sup>2</sup>
- **Bedrooms:** 2
- **Bathrooms:** 2
- **Living room:** open plan, combined with American kitchen
- **Terrace:** 21 m<sup>2</sup>, open, overlooking the green area
- **Floor:** 3rd floor of 4
- **Air conditioning:** pre-installation provided
- **Parking:** underground, included in the price

### Features of the complex and location:

- The apartments on the ground floor have a terrace with a garden, and the penthouses on the 4th floor have a private solarium
- Communal swimming pool, large garden and children's playground

- Convenient location: a few minutes from the Mar Menor beach, close to golf courses and shopping centers
- Costa Calida is a great place to relax and live, with a mild climate and magnificent high landscapes

The apartment is ideal for those who value comfort, modern amenities and closeness to nature.

Completion of construction is scheduled for 2025.

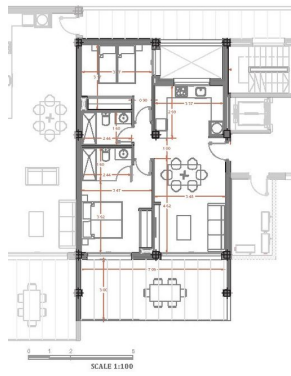
**Information updated: 01.11.2024**

## Photo gallery





**HOUSE N.60 (TYPE E) 2ND FLOOR - BLOCK 2**



THE VALUES REFER TO APPROXIMATE COUNT AND AREA VALUES  
REGARDING OTHER DETAIL PRODUCT

<b>BUILT SURFACE</b>	<b>93,50 M2</b>
LIVING ROOM KITCHEN	28,35 M2
BEDROOM 1	12,75 M2
BEDROOM 2	11,25 M2
BATHROOM 1	3,90 M2
BATHROOM 2	3,90 M2
CORRIDOR	3,75 M2
COVERED TERRACE 50%	10,75 M2
<b>TOTAL USABLE SURFACE</b>	<b>72,65 M2</b>



1 X BASHNET PARKING

2ND FLOOR TYPE E  
BLOCK 2 HOUSE 60

