





Luxury villa with spacious plot in Javea, just 5 minutes from the beach (300237)





1 680 000 €

-  Floor area **420 m²**
-  Number of rooms **4 bedrooms**
-  Furnitures **Partly**

 To the beach: **m**

 Location: **Spain, Аликанте**

 To the airport: **km**

 To the city centre: **km**

Options

- ✓ Warm floor
- ✓ Balcony/ Terrace
- ✓ Swimming pool
- ✓ Private territory

Description

This exquisite villa of **420 m²**, located on a plot of **1741 m²**, offers the perfect combination of privacy, modern comfort and a convenient location.

Javea's beaches, supermarkets, restaurants and schools are just a few minutes' drive away.

Layout:

Main house:

- **Spacious kitchen** with utility room, which has direct access to a partially covered terrace, ideal for year-round outdoor living
- **Living room** with fireplace, facing southwest, offering stunning sunset views
- **Master bedroom** with separate entrance, dressing room

Guest block:

- Two spacious bedrooms with en-suite bathrooms and terraces, which creates comfort for guests or family

- With a separate entrance, there is additional privacy

Extras:

- Multifunctional studio, suitable for an office or guest house

Amenities:

- Private rectangular pool (14x3m), ideal for swimming
- Spacious garden with views of the surrounding area
- Parking for several cars in the garage

Villa description:

- **4 bedrooms, 5 bathrooms**
- Fully furnished kitchen
- Duct air conditioning air
- Underfloor heating for maximum comfort
- Double glazing and security door
- Fenced plot for your safety and privacy

Location:

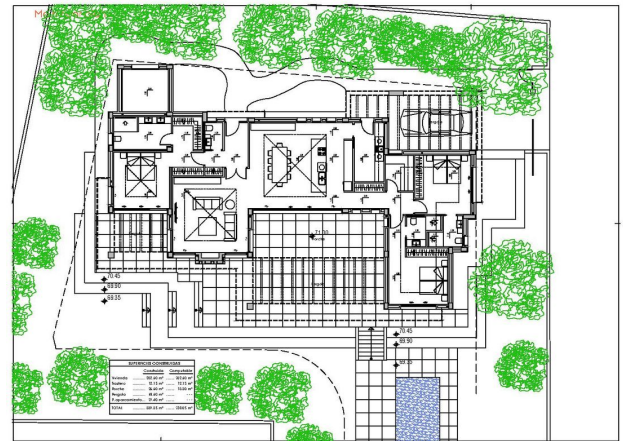
The villa is just 5 minutes drive from the sea and close to all amenities, combining the benefits of resort life and city work.

This villa is the perfect home for those who value space, comfort and a premium lifestyle.

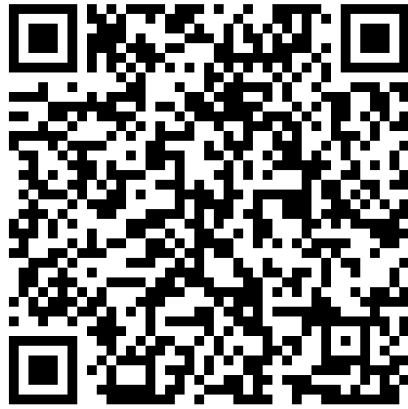
Completion of construction is planned for 2025.

Information updated: 21.11.2024

Photo gallery



RECAPITOLAZIONE	
Superficie Totale	10.000,00 m ²
Superficie Costruita	3.500,00 m ²
Superficie Verde	6.500,00 m ²
Superficie Piscina	1.000,00 m ²
Superficie Cortile	1.000,00 m ²



Scan the QR code to open the original page