







Spacious villa with private pool in a luxury complex in Orihuela Costa (312237)



900 000 €

-  Floor area **158 m²**
-  Number of rooms **3 bedrooms**
-  Furnitures **Full**
-  To the beach: **m**
-  Location: **Spain, Аликанте**
-  To the airport: **km**

 To the city
centre: km

Options

- ✓ White goods
- ✓ Furniture
- ✓ Smart house
- ✓ Warm floor
- ✓ Balcony/ Terrace
- ✓ Swimming pool
- ✓ Private territory
- ✓ Garage
- ✓ Garden

Description

Exclusive modern villa in a luxury complex located **in Orihuela Costa, Alicante, on the southern Costa Blanca.**

This house combines stylish design, comfort and magnificent views of the green area.

Key features:

- **Plot area:** 856 m²
- **Built area:** 158 m²
- **Floors:** 2 floors
- **3 bedrooms**, master bedroom with dressing room
- **2 bathrooms** and 1 guest toilet
- Spacious kitchen and living room, combined into a bright open space

Villa layout:

Ground floor:

- Master bedroom with dressing room
- 2 guest bedrooms
- Bathroom and guest toilet
- Modern kitchen and dining room

Semi-basement:

- Garage for 2 cars
- Laundry room
- Utility room
- Parking for golf buggy
- 50 m² of free space for arranging a recreation area or gym

Amenities and features:

- Private pool
- Duct air conditioning
- Modern kitchen with Bosch appliances (including washing machine and dryer)
- Underfloor heating in bathrooms
- Landscaped garden with trees, shrubs, flowers and automatic irrigation
- Smart home system, curtains and facade lighting
- Fenced plot for privacy and security

Villa advantages:

- Fully furnished house, ready to move in immediately after purchase: built-in wardrobes, furniture for all rooms, sanitary ware, dishes and cutlery included in the price
- The house is ideal for both permanent residence and for holidays: enjoy golf, the wonderful Mediterranean climate and beaches nearby

Price: 900,000 €

This villa is the perfect choice for those who appreciate quality, comfort and the corresponding lifestyle!

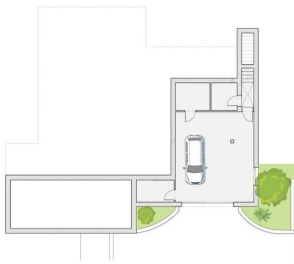
Information updated: 03.12.2024

Photo gallery





BASEMENT FLOOR
PLANTA SOTANO



TOTAL USEFUL SURFACE SUPERFICIES ÚTILES

GROUND FLOOR (m ²)	138,9	PLANTA BAJA TOTAL (m ²)
Entrance hall	2,96	Receptor
Living-Dining-Kitchen	51,18	Bañín-Corredor-Cocina
Hallway	2,61	Distribuidor
Toilet	1,79	Aseo
Bedroom 1	25,49	Dormitorio 1
Bedroom 2	5,58	Baño 1
Bedroom 3	13,36	Dormitorio 2
Bedroom 4	13,36	Dormitorio 3
Bedroom 5	5,19	Baño 2

BASEMENT FLOOR (m ²)	65,54	PLANTA SOTANO (m ²)
Garage	48,31	COCHERA
Facilities	8,37	C. INSTALACIONES
Facilities	6,73	C. INSTALACIONES
Storage	4,93	TRASTERO

TOTAL WITHOUT TERRACES 192,44 TOTAL SIN TERRAZAS

BUILD SURFACE SUPERFICIES CONSTRUIDAS

GROUND FLOOR	181,08	PLANTA BAJA
SEMI-BASEMENT (GARAGE)	91,05 <td>SEMI-SOTANO (COCHERA)</td>	SEMI-SOTANO (COCHERA)
TERRACE	86,00 <td>TERRAZA</td>	TERRAZA
POOL	40,00 <td>PISCINA</td>	PISCINA

CONSTRUCTED SURFACE COMPUTE 158,35 SUPERFICIE CONSTRUIDA COMPUTABLE
OCCUPANCY 172,18 OCUPACION

PLOT GROUND FLOOR
PARCELA PLANTA BAJA

BUILT CONSTRUÍDO
138,9 m²

PLOT PARCELA
806,24 m²
- 915,8 m²







Scan the QR code to open the original page