

Construction commencement  
March 2022  
Duration of construction  
December 2023



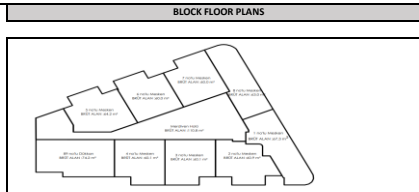
Payment plan  
\* 25% upon contract signature  
\* 75% payment; to be paid in  
equal monthly installments  
until construction is finished



Maintenance fees (monthly)  
1+1 50 € / 2+1 60 € / 3+1 70 €

01.04.2022

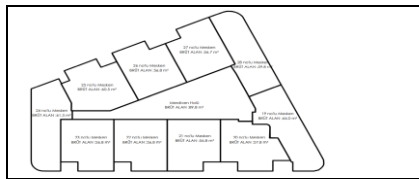
| BLOCK    |           |              |      |      |       |
|----------|-----------|--------------|------|------|-------|
| Apt. No. | Direction | Floor        | Room | Size | Price |
| No. 1    | NE        | Ground floor | 1+1  | 67,3 | SOLD  |
| No. 2    | E         | Ground floor | 1+1  | 60,9 | SOLD  |
| No. 3    | E         | Ground floor | 1+1  | 60,1 | SOLD  |
| No. 4    | E         | Ground floor | 1+1  | 60,1 | SOLD  |
| No. 5    | SW        | Ground floor | 1+1  | 64,2 | SOLD  |
| No. 6    | W         | Ground floor | 1+1  | 60   | SOLD  |
| No. 7    | W         | Ground floor | 1+1  | 60   | SOLD  |
| No. 8    | NW        | Ground floor | 1+1  | 63   | SOLD  |



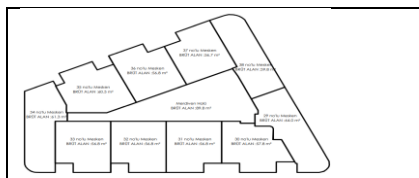
|        |    |       |     |      |      |
|--------|----|-------|-----|------|------|
| No. 9  | NE | 1.Kat | 1+1 | 64   | SOLD |
| No. 10 | E  | 1.Kat | 1+1 | 57,8 | SOLD |
| No. 11 | E  | 1.Kat | 1+1 | 56,8 | SOLD |
| No. 12 | E  | 1.Kat | 1+1 | 56,8 | SOLD |
| No. 13 | SE | 1.Kat | 1+1 | 56,8 | SOLD |
| No. 14 | S  | 1.Kat | 1+1 | 61,3 | SOLD |
| No. 15 | W  | 1.Kat | 1+1 | 60,5 | SOLD |
| No. 16 | W  | 1.Kat | 1+1 | 56,8 | SOLD |
| No. 17 | W  | 1.Kat | 1+1 | 56,7 | SOLD |
| No. 18 | NW | 1.Kat | 1+1 | 59,8 | SOLD |



|        |    |       |     |      |              |
|--------|----|-------|-----|------|--------------|
| No. 19 | NE | 2.Kat | 1+1 | 64   | SOLD         |
| No. 20 | E  | 2.Kat | 1+1 | 57,8 | SOLD         |
| No. 21 | E  | 2.Kat | 1+1 | 56,8 | 179.000,00 € |
| No. 22 | E  | 2.Kat | 1+1 | 56,8 | SOLD         |
| No. 23 | SE | 2.Kat | 1+1 | 56,8 | SOLD         |
| No. 24 | S  | 2.Kat | 1+1 | 61,3 | SOLD         |
| No. 25 | W  | 2.Kat | 1+1 | 60,5 | SOLD         |
| No. 26 | W  | 2.Kat | 1+1 | 56,8 | SOLD         |
| No. 27 | W  | 2.Kat | 1+1 | 56,7 | SOLD         |
| No. 28 | NW | 2.Kat | 1+1 | 59,8 | SOLD         |



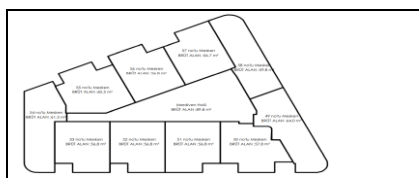
|        |    |       |     |      |              |
|--------|----|-------|-----|------|--------------|
| No. 29 | NE | 3.Kat | 1+1 | 64   | SOLD         |
| No. 30 | E  | 3.Kat | 1+1 | 57,8 | 198.000,00 € |
| No. 31 | E  | 3.Kat | 1+1 | 56,8 | SOLD         |
| No. 32 | E  | 3.Kat | 1+1 | 56,8 | SOLD         |
| No. 33 | SE | 3.Kat | 1+1 | 56,8 | SOLD         |
| No. 34 | S  | 3.Kat | 1+1 | 61,3 | SOLD         |
| No. 35 | W  | 3.Kat | 1+1 | 60,5 | SOLD         |
| No. 36 | W  | 3.Kat | 1+1 | 56,8 | SOLD         |
| No. 37 | W  | 3.Kat | 1+1 | 56,7 | SOLD         |
| No. 38 | NW | 3.Kat | 1+1 | 59,8 | SOLD         |



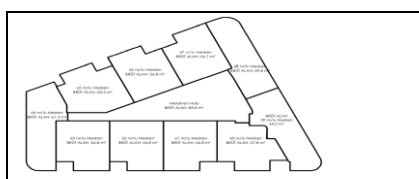
|        |    |       |     |      |              |
|--------|----|-------|-----|------|--------------|
| No. 39 | NE | 4.Kat | 1+1 | 64   | SOLD         |
| No. 40 | E  | 4.Kat | 1+1 | 57,8 | SOLD         |
| No. 41 | E  | 4.Kat | 1+1 | 56,8 | 185.000,00 € |
| No. 42 | E  | 4.Kat | 1+1 | 56,8 | SOLD         |
| No. 43 | SE | 4.Kat | 1+1 | 56,8 | SOLD         |
| No. 44 | S  | 4.Kat | 1+1 | 61,3 | SOLD         |
| No. 45 | W  | 4.Kat | 1+1 | 60,5 | SOLD         |
| No. 46 | W  | 4.Kat | 1+1 | 56,8 | SOLD         |
| No. 47 | W  | 4.Kat | 1+1 | 56,7 | SOLD         |
| No. 48 | NW | 4.Kat | 1+1 | 59,8 | SOLD         |



|        |    |       |     |      |      |
|--------|----|-------|-----|------|------|
| No. 49 | NE | 5.Kat | 1+1 | 64   | SOLD |
| No. 50 | E  | 5.Kat | 1+1 | 57,8 | SOLD |
| No. 51 | E  | 5.Kat | 1+1 | 56,8 | SOLD |
| No. 52 | E  | 5.Kat | 1+1 | 56,8 | SOLD |
| No. 53 | SE | 5.Kat | 1+1 | 56,8 | SOLD |
| No. 54 | S  | 5.Kat | 1+1 | 61,3 | SOLD |
| No. 55 | W  | 5.Kat | 1+1 | 60,5 | SOLD |
| No. 56 | W  | 5.Kat | 1+1 | 56,8 | SOLD |
| No. 57 | W  | 5.Kat | 1+1 | 56,7 | SOLD |
| No. 58 | NW | 5.Kat | 1+1 | 59,8 | SOLD |



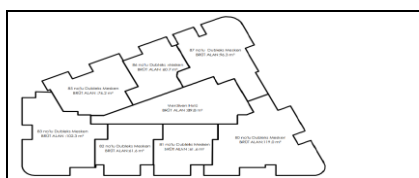
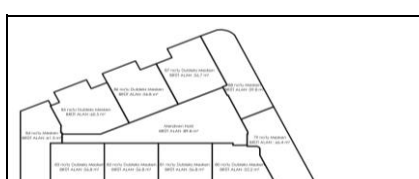
|        |    |       |     |      |              |
|--------|----|-------|-----|------|--------------|
| No. 59 | NE | 6.Kat | 1+1 | 64   | SOLD         |
| No. 60 | E  | 6.Kat | 1+1 | 57,8 | SOLD         |
| No. 61 | E  | 6.Kat | 1+1 | 56,8 | SOLD         |
| No. 62 | E  | 6.Kat | 1+1 | 56,8 | SOLD         |
| No. 63 | SE | 6.Kat | 1+1 | 56,8 | SOLD         |
| No. 64 | S  | 6.Kat | 1+1 | 61,3 | SOLD         |
| No. 65 | W  | 6.Kat | 1+1 | 60,5 | SOLD         |
| No. 66 | W  | 6.Kat | 1+1 | 56,8 | SOLD         |
| No. 67 | W  | 6.Kat | 1+1 | 56,7 | SOLD         |
| No. 68 | NW | 6.Kat | 1+1 | 59,8 | 240.000,00 € |



|        |    |       |     |      |      |
|--------|----|-------|-----|------|------|
| No. 69 | NE | 7.Kat | 1+1 | 64   | SOLD |
| No. 70 | E  | 7.Kat | 1+1 | 57,8 | SOLD |
| No. 71 | E  | 7.Kat | 1+1 | 56,8 | SOLD |
| No. 72 | E  | 7.Kat | 1+1 | 56,8 | SOLD |
| No. 73 | SE | 7.Kat | 1+1 | 56,8 | SOLD |
| No. 74 | S  | 7.Kat | 1+1 | 61,3 | SOLD |
| No. 75 | W  | 7.Kat | 1+1 | 60,5 | SOLD |
| No. 76 | W  | 7.Kat | 1+1 | 56,8 | SOLD |
| No. 77 | W  | 7.Kat | 1+1 | 56,7 | SOLD |
| No. 78 | NW | 7.Kat | 1+1 | 59,8 | SOLD |



|        |    |                    |     |       |      |
|--------|----|--------------------|-----|-------|------|
| No. 79 | NE | 8. Kat             | 1+1 | 66,4  | SOLD |
| No. 80 | E  | 8.Kat Duplex       | 3+1 | 174,2 | SOLD |
| No. 81 | E  | 8.Kat Duplex       | 2+1 | 118,4 | SOLD |
| No. 82 | E  | 8.Kat Duplex       | 2+1 | 118,4 | SOLD |
| No. 83 | SE | 8.Kat Duplex       | 3+1 | 159,1 | SOLD |
| No. 84 | S  | 8. Kat             | 1+1 | 61,3  | SOLD |
| No. 85 | W  | 8.Kat Duplex       | 3+1 | 136,7 | SOLD |
| No. 86 | W  | 8.Kat Duplex       | 2+1 | 117,5 | SOLD |
| No. 87 | W  | 8.Kat Duplex       | 3+1 | 153   | SOLD |
| No. 88 | NW | 8.Kat              | 1+1 | 59,8  | SOLD |
| No. 89 | SE | Dükkan/Shop Ground |     | 74,2  | SOLD |



Please check the direction of the compass!