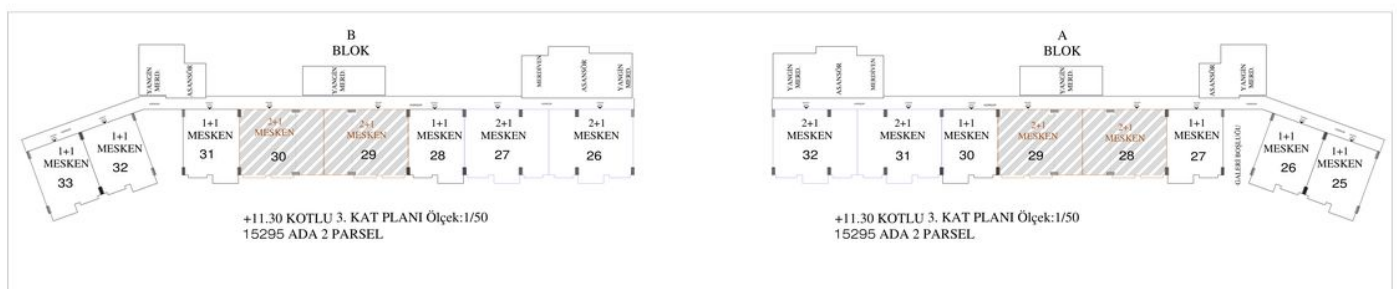


# Apartment complex project in Antalya, Kundu (001307)



199 000 € - 1 500 000 €

🏠 Площа 87 м<sup>2</sup> - 185 м<sup>2</sup>


🛏 Кімнат 2 спальні  
2+1 пентхаус  
3+1 пентхаус

🪑 Меблі Частково

🌊 До моря: м

 Локація: **Туреччина, Анталія**

 До аеропорту: **1 км**

 До центру  
міста: **км**

## Опції

- ✓ Вид на море
- ✓ Встроенная техника
- ✓ Джакузи
- ✓ Балкон/Тераса
- ✓ Басейн
- ✓ Закрита територія
- ✓ Відкрита автостоянка
- ✓ Розтермінування під 0%
- ✓ Охорона
- ✓ Первая линия моря
- ✓ Сад
- ✓ Теннисный корт
- ✓ Услуги по сдаче в аренду
- ✓ Ліфт
- ✓ Дитячий майданчик
- ✓ Генератор

## Опис

The complex project in Antalya is on a plot of 10,720 m<sup>2</sup>. 5 km from the world-famous Lara/Kundu hotels, 1 km from Antalya Airport, the tourism center, 1 km from private schools, 4.5 km from shopping malls such as the Mall of Antalya, Agora, Ikea.

With a length of 195 m and 12 floors, the building, inspired by the cruise ship created by its creator, is nominated for the title of the best project in the region with its unusual architecture.

**In the project, which includes 174 apartments, including 1 office:**

1+1 - 87 m<sup>2</sup>, 2+1 - from 110 to 145 m<sup>2</sup>

3+1 - from 163 to 186 m<sup>2</sup>.

All apartments are south facing and all have views of the social areas.

**Social infrastructure:**

- Lobby/Reception
- Covered parking (with 2 electric vehicle chargers)
- outdoor parking
- Tennis and basketball court
- Footpath
- Conference room and library
- Fitness/Sauna/Steam
- Outdoor swimming pool
- Indoor pool
- Aquapark
- Playground
- Mini club
- Private beach (free entrance)
- Free shuttle service (to the beach, airport, and malls)
- Barbecue area
- TV and satellite system
- Playgrounds (bowling, billiards, darts, table football, PlayStation, cinema)
- 24/7 security and video surveillance system
- Cafe and bar

- Solar energy systems (part of the energy used in social areas will be produced using solar panels).
- medical office

### **Building features:**

- Compliant with earthquake regulations
- Conforms to building control regulations
- Complies with fire safety regulations
- surveyed land
- Generator
- Hidden air conditioning unit
- First quality insulation
- 6 elevators

### **Service sector:**

- Hotel Services
- Dry cleaning
- Cleaning
- Carpet cleaning
- Technical service
- VIP transfer
- Car rent
- Courier service
- Veterinary
- Doctor

### **In the apartment:**

- Built-in oven
- hob

### **Cooling system:**

- Split air conditioner

### **Brands:**

- Mitsubishi and similar

### **Heating system:**

- Combined (with electric drive)
- Heating floor
- Brands
- Vaillant and similar

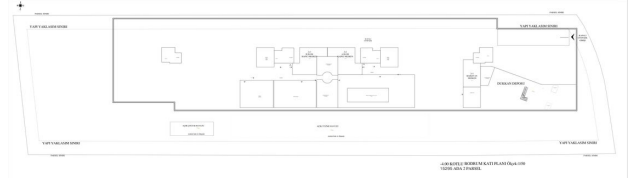
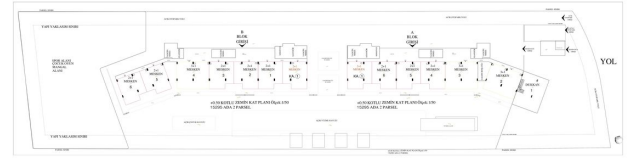
### **The material used in finishing:**

- Used Products
- Aluminum systems in doors and windows
- Kitchen and bathroom cabinets and American doors, lacquered
- Bases 60\*120 Ceramic or equivalent.
- shower cabin
- steel door

**Updated 21.06.2024**

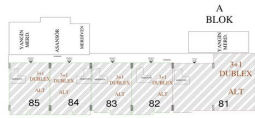
## **Фотогалерея**



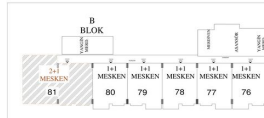




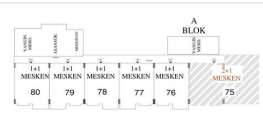
+40.10 KOTLU 11. KAT PLANI Ölçek:1/50  
15295 ADA 2 PARSEL.



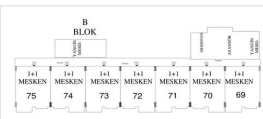
+40.10 KOTLU 11. KAT PLANI Ölçek:1/50  
15295 ADA 2 PARSEL.



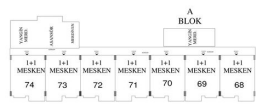
+36.50 KOTLU 10. KAT PLANI Ölçek:1/50  
15295 ADA 2 PARSEL.



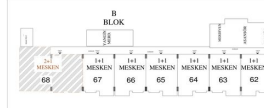
+36.50 KOTLU 10. KAT PLANI Ölçek:1/50  
15295 ADA 2 PARSEL.



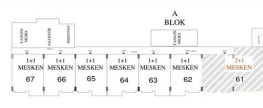
+32.90 KOTLU 9. KAT PLANI Ölçek:1/50  
15295 ADA 2 PARSEL.



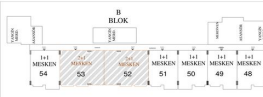
+32.90 KOTLU 9. KAT PLANI Ölçek:1/50  
15295 ADA 2 PARSEL.



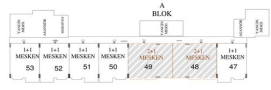
+30.30 KOTLU 8. KAT PLANI Ölçek:1/50  
15295 ADA 2 PARSEL.



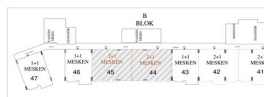
+30.30 KOTLU 8. KAT PLANI Ölçek:1/50  
15295 ADA 2 PARSEL.



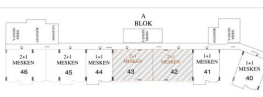
+22.10 KOTLU 6. KAT PLANI Ölçek:1/50  
15295 ADA 2 PARSEL.



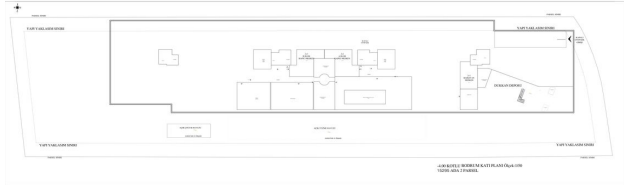
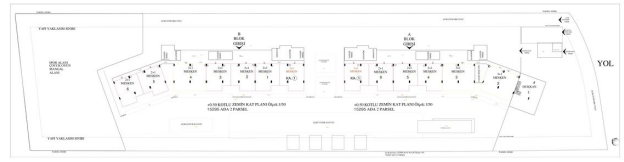
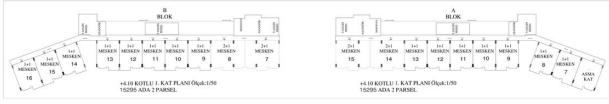
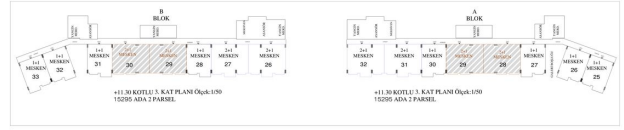
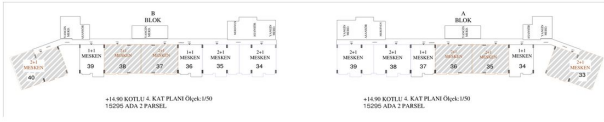
+22.10 KOTLU 6. KAT PLANI Ölçek:1/50  
15295 ADA 2 PARSEL.



+18.50 KOTLU 5. KAT PLANI Ölçek:1/50  
15295 ADA 2 PARSEL.



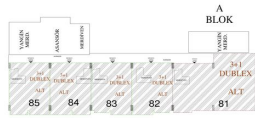
+18.50 KOTLU 5. KAT PLANI Ölçek:1/50  
15295 ADA 2 PARSEL.



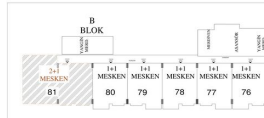




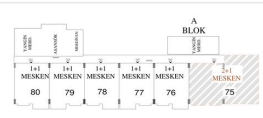
+40.10 KOTLU 11. KAT PLANI Ölçek:1/50  
15295 ADA 2 PARSEL.



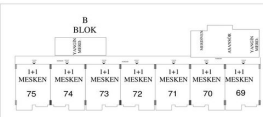
+40.10 KOTLU 11. KAT PLANI Ölçek:1/50  
15295 ADA 2 PARSEL.



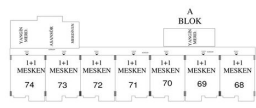
+36.50 KOTLU 10. KAT PLANI Ölçek:1/50  
15295 ADA 2 PARSEL.



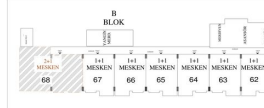
+36.50 KOTLU 10. KAT PLANI Ölçek:1/50  
15295 ADA 2 PARSEL.



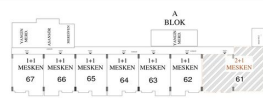
+32.90 KOTLU 9. KAT PLANI Ölçek:1/50  
15295 ADA 2 PARSEL.



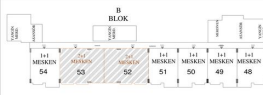
+32.90 KOTLU 9. KAT PLANI Ölçek:1/50  
15295 ADA 2 PARSEL.



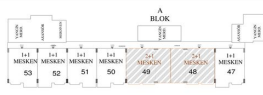
+30.30 KOTLU 8. KAT PLANI Ölçek:1/50  
15295 ADA 2 PARSEL.



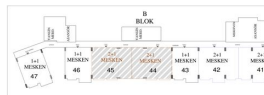
+30.30 KOTLU 8. KAT PLANI Ölçek:1/50  
15295 ADA 2 PARSEL.



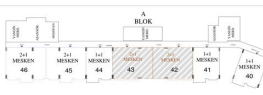
+22.10 KOTLU 6. KAT PLANI Ölçek:1/50  
15295 ADA 2 PARSEL.



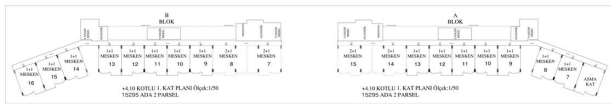
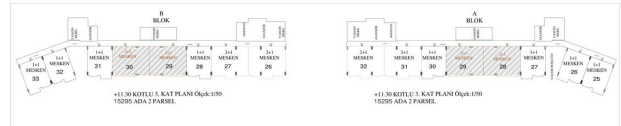
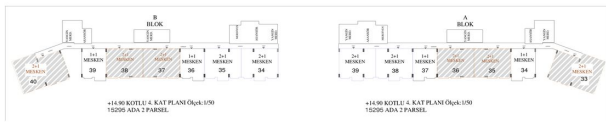
+22.10 KOTLU 6. KAT PLANI Ölçek:1/50  
15295 ADA 2 PARSEL.



+18.50 KOTLU 5. KAT PLANI Ölçek:1/50  
15295 ADA 2 PARSEL.



+18.50 KOTLU 5. KAT PLANI Ölçek:1/50  
15295 ADA 2 PARSEL.



Відскануйте QR-код, щоб відкрити початкову сторінку