

Квартири в новому проекті в центрі Стамбула (112345)



210 000 € - 374 000 €

🏠 Площа **116 м² - 250 м²**

🏠 Кімнат **2 спальні**

3 спальні

4 спальні

🪑 Меблі **Частково**

🌊 До моря: **м**

📍 Локація: Туреччина, Стамбул

✈ До аеропорту: км

🏠 До центру міста: км

Опції

- ✓ Балкон/Тераса
- ✓ Басейн
- ✓ Закрита територія
- ✓ Охорона
- ✓ Підземний паркінг
- ✓ Дитячий майданчик
- ✓ Ескалатор
- ✓ Генератор

Опис

A new project is born in the center of Istanbul, precisely in KUÇUKÇEKMECE with a direct view of the magnificent lake, which is part of the new Bosphorus, the project of the century.

The project consists of two blocks with a height of 10 floors, and only 4 apartments on each floor.

We have different types of apartments from 2+1 to 4+1.

60% of the project have a view of the sea and a direct lake.

A complete infrastructure providing luxurious standards, comfort and a safe family atmosphere.

Infrastructure:

- 45% green area

- indoor pool
- Gym
- sauna
- turkish hammam
- covered parking
- safety

The project is only 2 minutes from the MARMARAY METRO STATION station, which connects the project area with all districts of Istanbul, even the Asian part within 30 minutes.

Location:

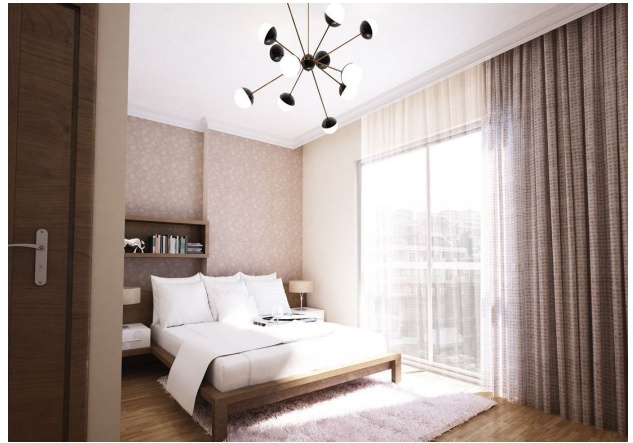
- 10 minutes (walking distance) from Istanbul's most important highway ``E-5``, the main transport road that contains the metrobus.
- 10 minutes drive (by car) from universities such as Istanbul Aydın University.
- 5 minutes drive from hospitals such as ACI BADEM HOSPITAL.
- 5 minutes (by car) from FLORYA MALL or 10 minutes by Marmaray metro.
- 5 minutes (walking distance) from Turkish and international schools
- 35 minutes from the new Istanbul Airport

Information updated: 24.06.2024

Фотогалерея







Відскануйте QR-код, щоб відкрити початкову сторінку